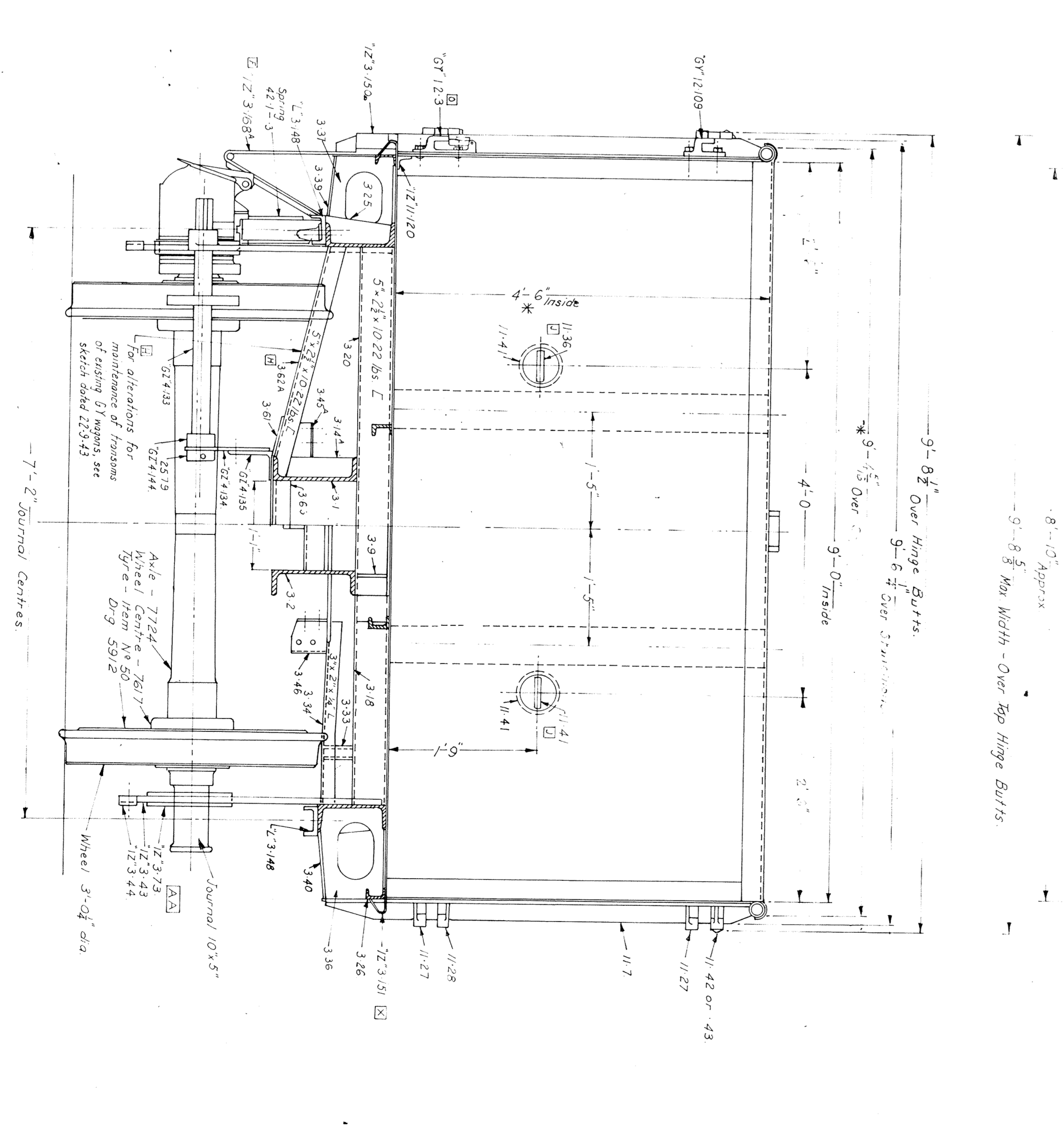
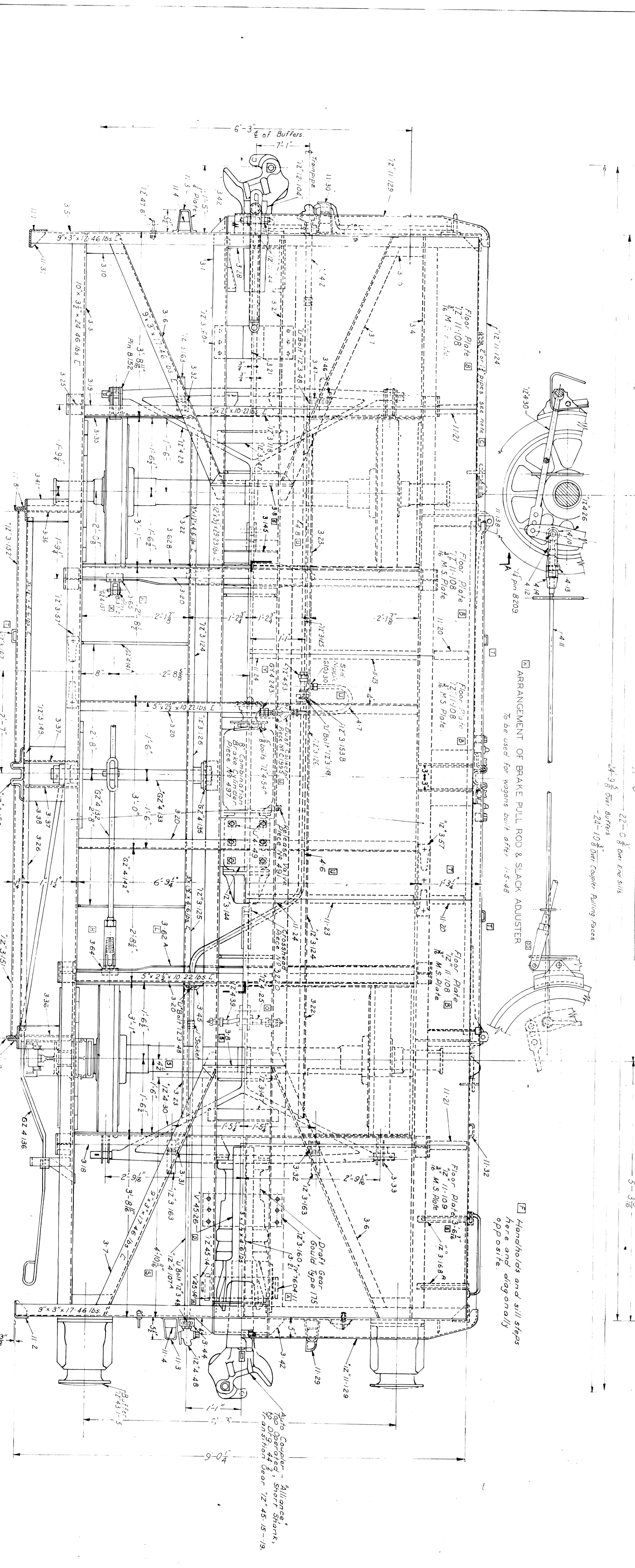


REVISION	DATE	BY	DESCRIPTION
1	12-11-38	J.W.	Initial Design
2	1-10-39	J.W.	Revised Design
3	2-10-39	J.W.	Final Design
4	3-10-39	J.W.	Construction Details
5	4-10-39	J.W.	Final Assembly



REVISION	DATE	BY	DESCRIPTION
1	12-11-38	J.W.	Initial Design
2	1-10-39	J.W.	Revised Design
3	2-10-39	J.W.	Final Design
4	3-10-39	J.W.	Construction Details
5	4-10-39	J.W.	Final Assembly

**GENERAL ARRANGEMENT**

**GY WAGON**

**SECTION AT A-A**

**NOTES:**

- For wagon built after 1938 see GY 1A
- Lead - 22 Rows
- Overall Brake Leverage - Hand - 398
- Overall Brake Leverage - Motor - 721
- Dimensions indicated thus \* apply to wagon with 3" axle spacing
- With 2" axle spacing these dimensions are increased 1/4" length
- On wagon built prior to 1938 handbrakes only are located diagonally opposite.
- Handbrakes and sill stops are and diagonally opposite.

**MINIMUM STRUCTURE OUTLINE**

**SECTION AT A-A**

**NOTES:**

- For wagon built after 1938 see GY 1A
- Lead - 22 Rows
- Overall Brake Leverage - Hand - 398
- Overall Brake Leverage - Motor - 721
- Dimensions indicated thus \* apply to wagon with 3" axle spacing
- With 2" axle spacing these dimensions are increased 1/4" length
- On wagon built prior to 1938 handbrakes only are located diagonally opposite.
- Handbrakes and sill stops are and diagonally opposite.

**GENERAL ARRANGEMENT**

**GY WAGON**

**SECTION AT A-A**

**NOTES:**

- For wagon built after 1938 see GY 1A
- Lead - 22 Rows
- Overall Brake Leverage - Hand - 398
- Overall Brake Leverage - Motor - 721
- Dimensions indicated thus \* apply to wagon with 3" axle spacing
- With 2" axle spacing these dimensions are increased 1/4" length
- On wagon built prior to 1938 handbrakes only are located diagonally opposite.
- Handbrakes and sill stops are and diagonally opposite.

**MINIMUM STRUCTURE OUTLINE**

**SECTION AT A-A**

**NOTES:**

- For wagon built after 1938 see GY 1A
- Lead - 22 Rows
- Overall Brake Leverage - Hand - 398
- Overall Brake Leverage - Motor - 721
- Dimensions indicated thus \* apply to wagon with 3" axle spacing
- With 2" axle spacing these dimensions are increased 1/4" length
- On wagon built prior to 1938 handbrakes only are located diagonally opposite.
- Handbrakes and sill stops are and diagonally opposite.

**GENERAL ARRANGEMENT**

**GY WAGON**

**SECTION AT A-A**

**NOTES:**

- For wagon built after 1938 see GY 1A
- Lead - 22 Rows
- Overall Brake Leverage - Hand - 398
- Overall Brake Leverage - Motor - 721
- Dimensions indicated thus \* apply to wagon with 3" axle spacing
- With 2" axle spacing these dimensions are increased 1/4" length
- On wagon built prior to 1938 handbrakes only are located diagonally opposite.
- Handbrakes and sill stops are and diagonally opposite.

**MINIMUM STRUCTURE OUTLINE**

**SECTION AT A-A**

**NOTES:**

- For wagon built after 1938 see GY 1A
- Lead - 22 Rows
- Overall Brake Leverage - Hand - 398
- Overall Brake Leverage - Motor - 721
- Dimensions indicated thus \* apply to wagon with 3" axle spacing
- With 2" axle spacing these dimensions are increased 1/4" length
- On wagon built prior to 1938 handbrakes only are located diagonally opposite.
- Handbrakes and sill stops are and diagonally opposite.