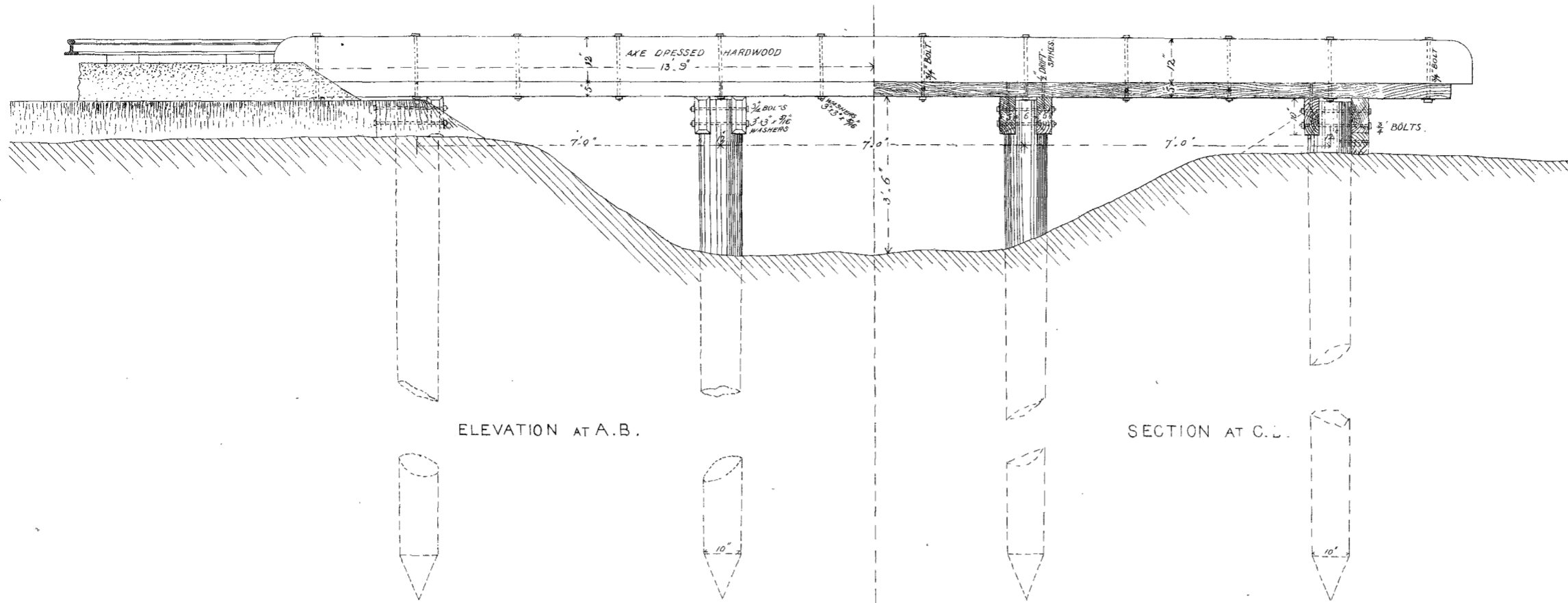


# VICTORIAN RAILWAYS.

*Car Culvert & Wing at Bedford Street*  
 3 OPENINGS EACH 6 FEET. at O. 67. 53

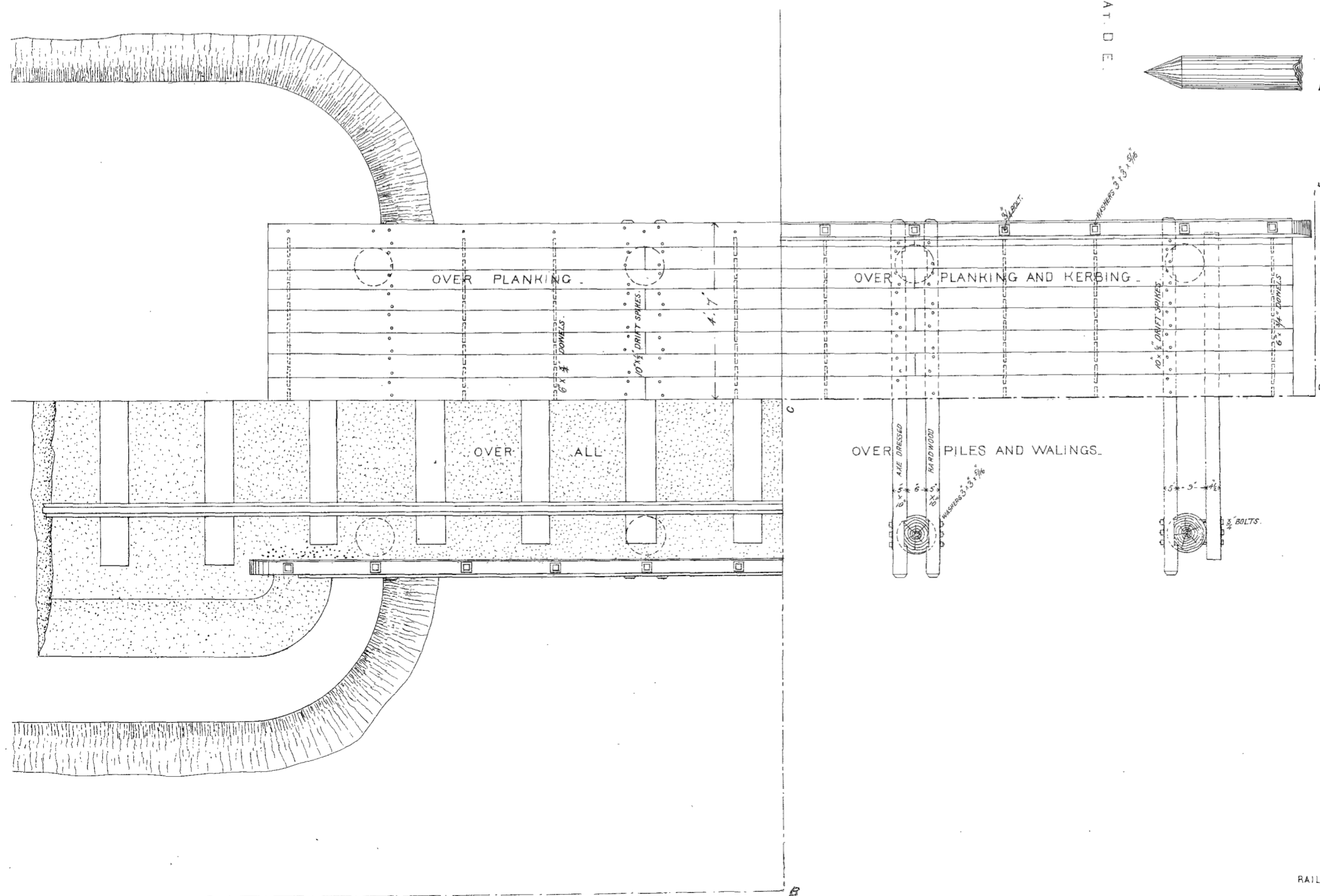
CONTRACT No. 1136  
 No. 16



*The length of Piles may vary as the superintending officer may direct.*

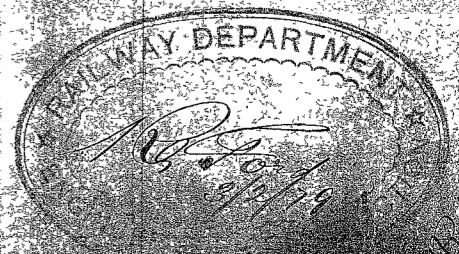
## HARDWOOD CULVERT AT

Scale. 2 Feet = 1 Inch.



RAILWAY DEPARTMENT, MELBOURNE, JAN 1886

OFFICE COPY.



470