

1131

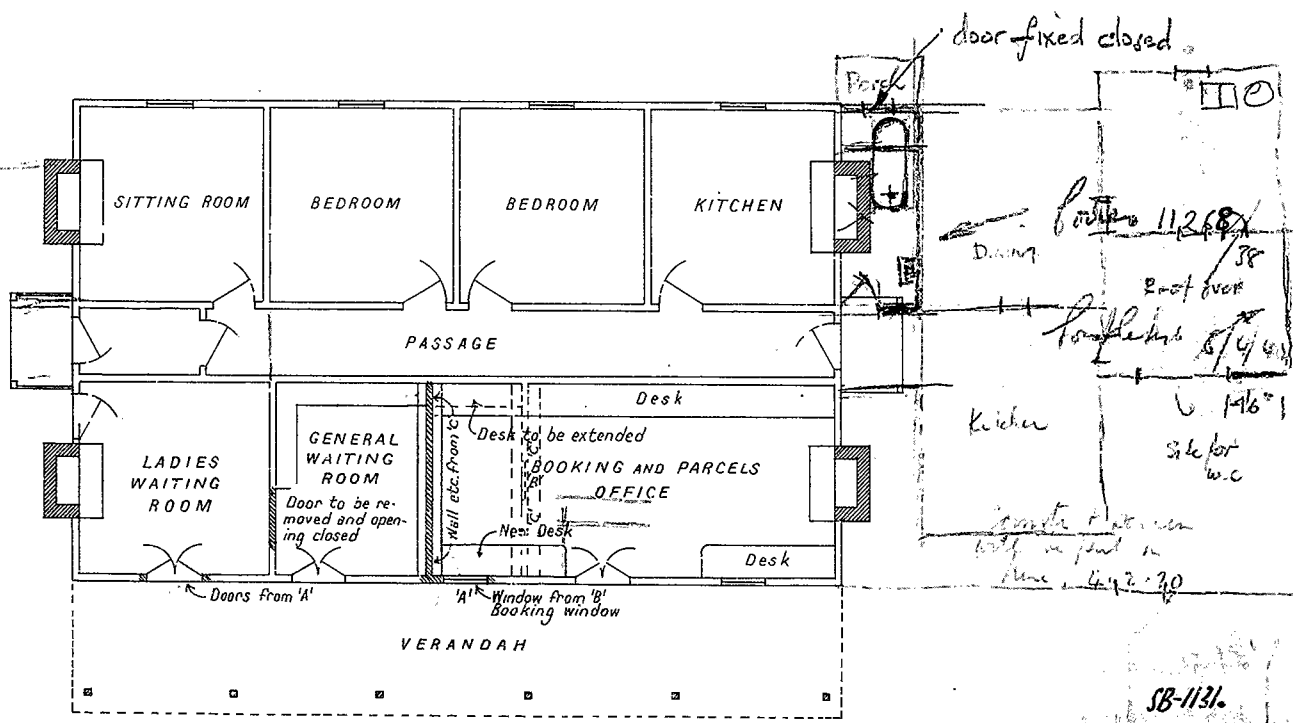
V.-R.
TRENTHAM
 Proposed Alterations to Station Buildings
 Scale - 8 Feet = One Inch.

L.E.M.

19860/18

Notes revised
16.1.19

100' Goods platform
removed 1947-48
5233/43



door fixed closed

Notes 11268/38
East over
Langley 6/4/48

Kitchen
146"
Site for
w.c.
Goods platform
with in part in
line 447-70

PLAN

J.A.
Architect
16.1.19.

SB-1131.
E-35.
Asst. Chief Engineer of Way and Works
16.1.19. 112-19

