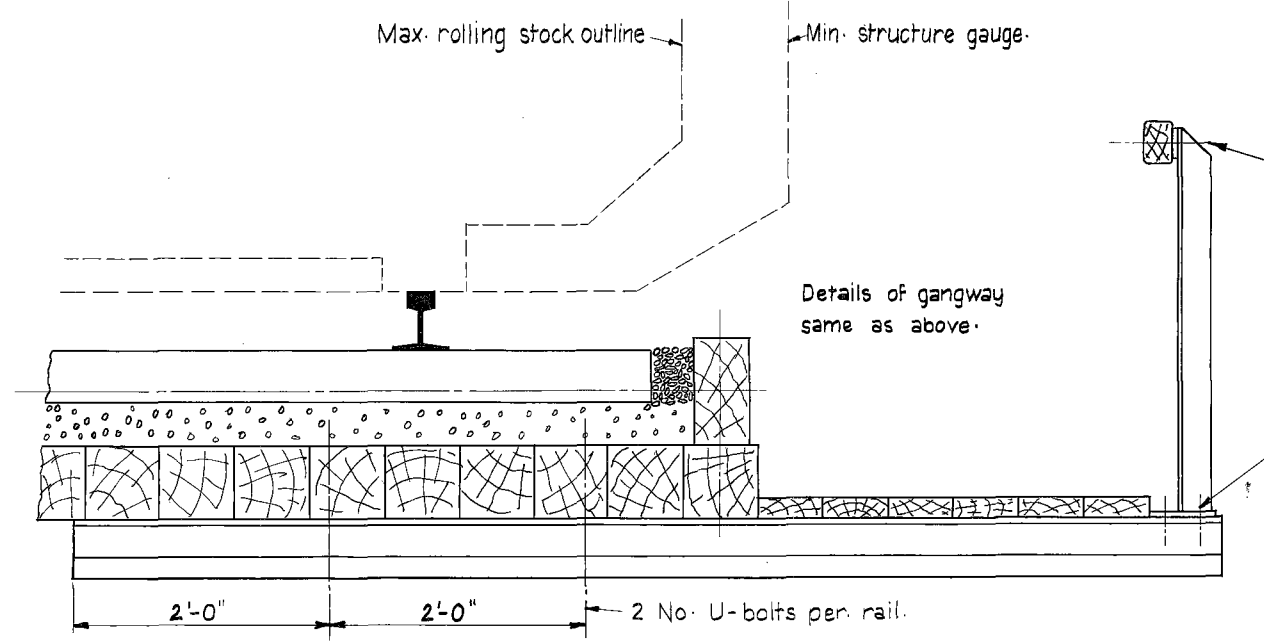
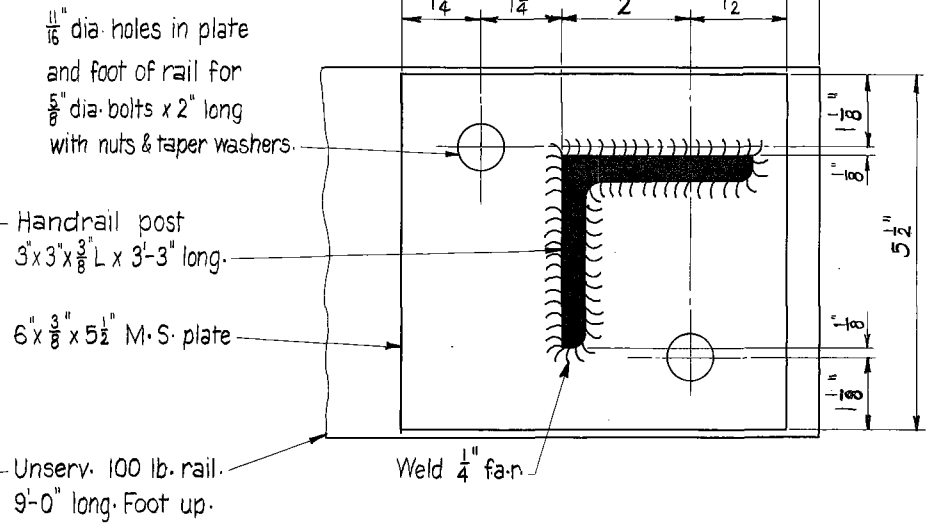


SECTIONAL ELEVATION (New Rail Deck)
Scale :- 1" = 1'-0"

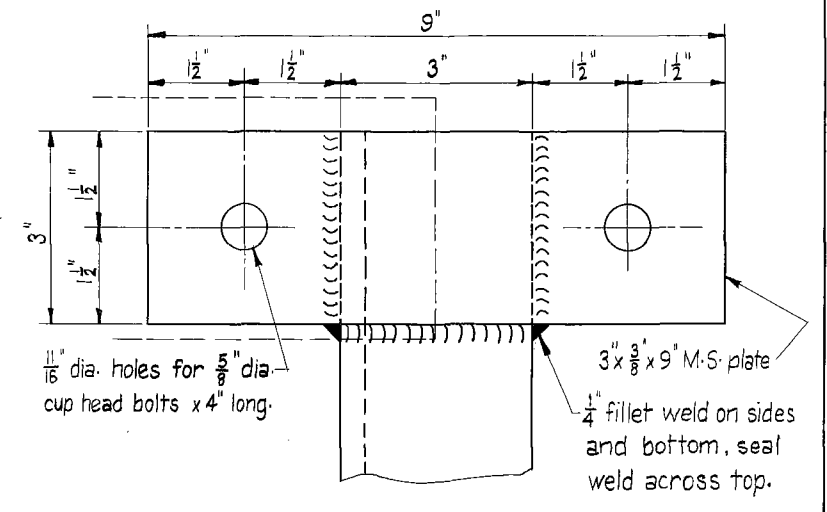


SECTIONAL ELEVATION (Existing Timber Deck.)
Scale :- 1" = 1'-0"

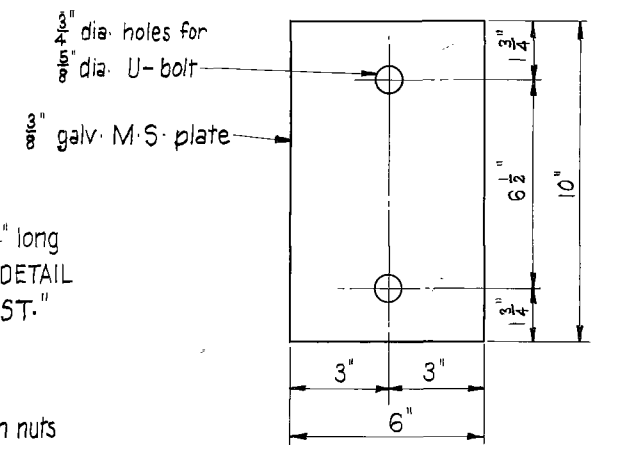
NOTES Instructions have been issued for renewal of deck in accordance with plan F-348. Provision has been made such that the gangway may be attached to the existing timber deck as well as to the new rail deck should it be necessary to construct gangway before renewal of deck. Rails to be placed at 5'-0" c/c min. and 6'-0" c/c max. use 5'-6" c/c where practicable.



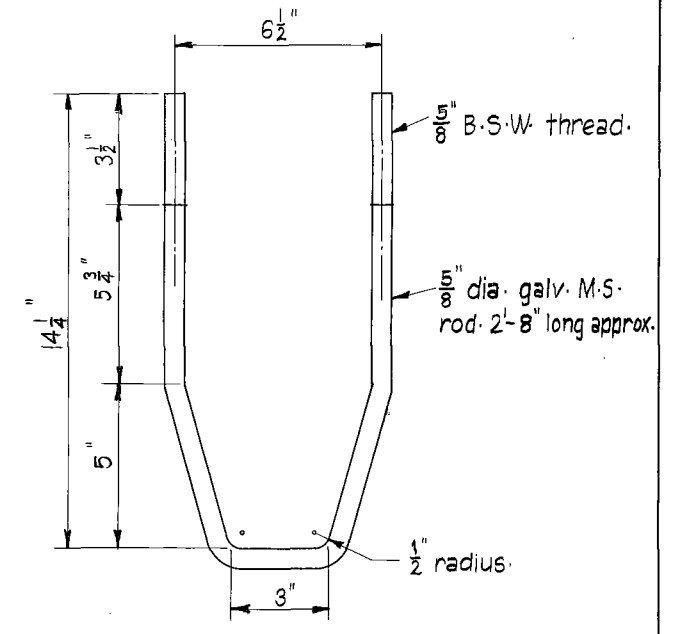
DETAIL OF HANDRAIL POST CONNECTION
Scale :- 6" = 1'-0"



DETAIL AT TOP OF HANDRAIL POST
Scale :- 6" = 1'-0"



Req^d 20 No.
DETAIL OF WASHER PLATE
Scale :- 3" = 1'-0"



Req^d 20 No.
DETAIL OF U-BOLT
Scale :- 3" = 1'-0"

V.R.

CARLSRUHE — DAYLESFORD
BRIDGE AT 63^M 70^C 36^L
SHUNTERS' GANGWAY ON 'UP' SIDE

B. D. W. 19.10.62.
Chief Civil Engineer

Revision	Date	Amendment	Amended	Checked	Drawn M.R.S.	Checked K.W.W.	Corres. 15762/61	Engineer of Structural Design. L.S.	DRAWER C-51-24	PLAN NO. 748/62
----------	------	-----------	---------	---------	-----------------	-------------------	---------------------	--	-------------------	--------------------