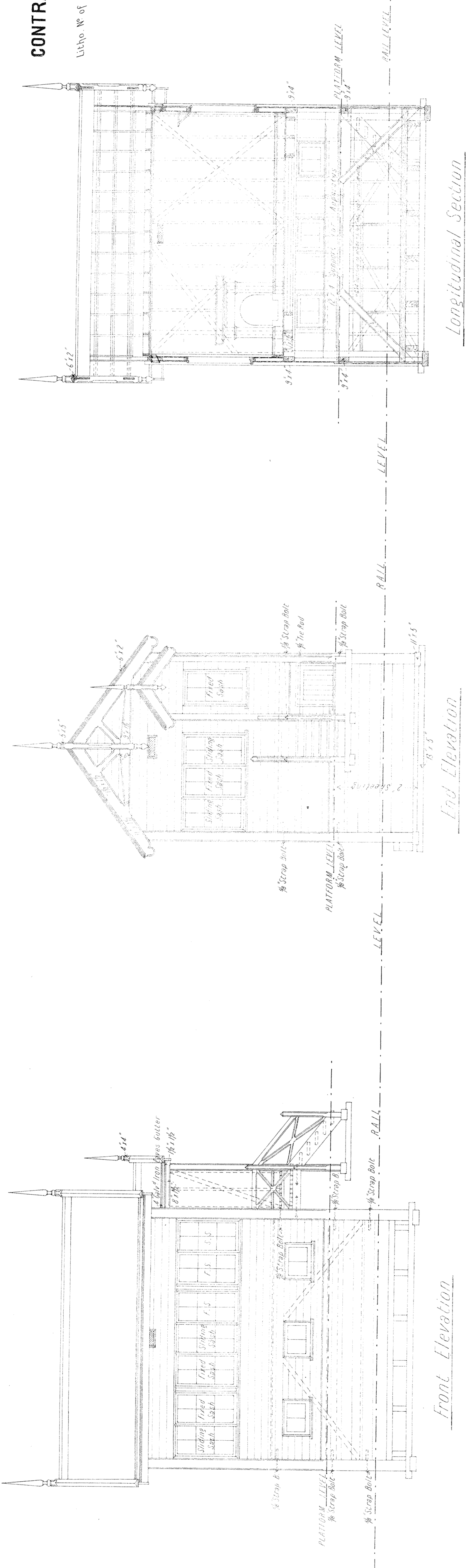
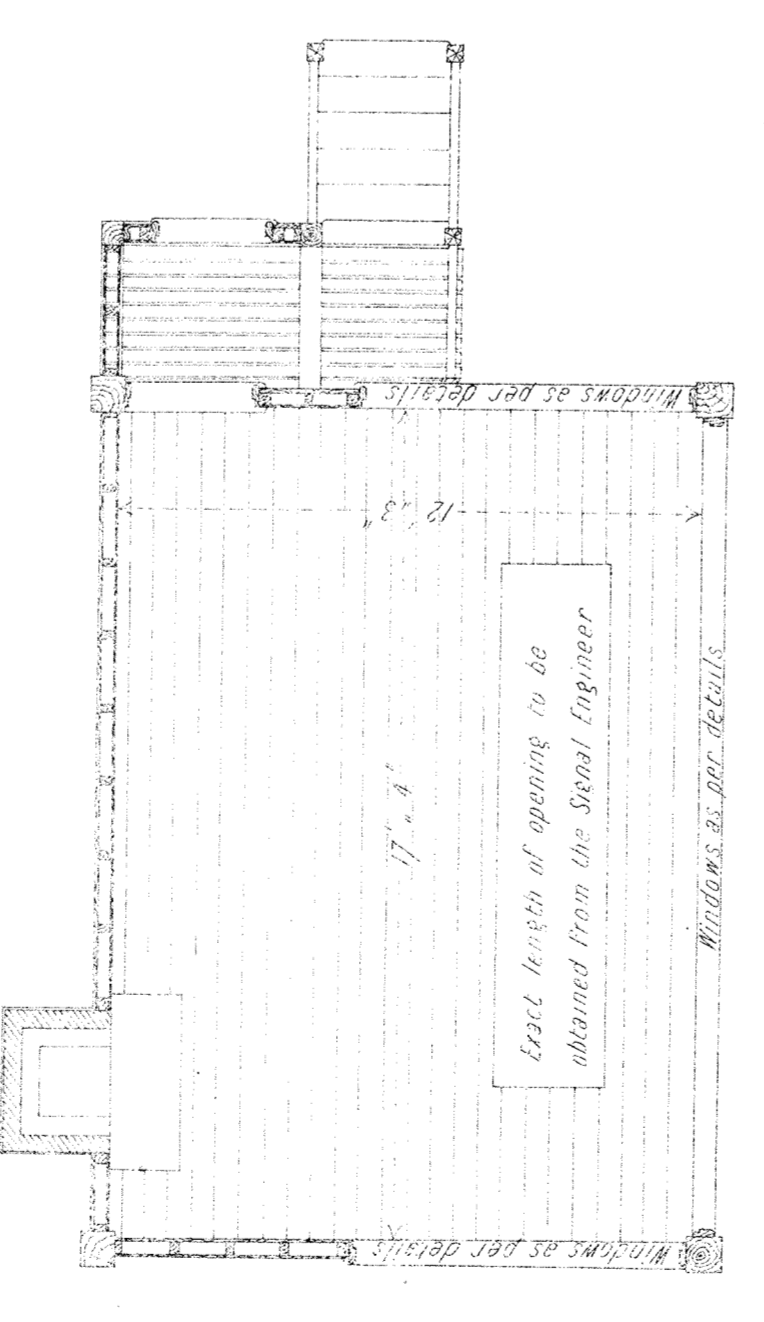
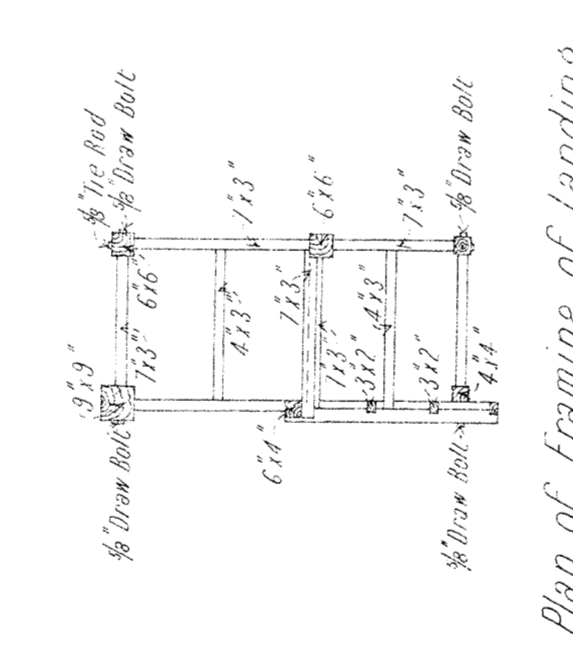


CONTRACT NO 4521
 NO 1
 VARIOUS NO OF NO 2 SHEETS 134/120



VICTORIAN RAILWAYS
 MELBOURNE & ADELAIDE LINE
 Signal Box at Ballan

SCALE 4 FEET TO AN INCH
 Size 17' 4" x 17' 4" - Height above Platform 4'-0"



SCANTLINGS

Lower Floor Joists	12" x 8"	T & headed lathings	6" x 8"
Apparatus Standards	12" x 8"	Loose Door Post	11" x 1 1/2"
Angle Posts	9" x 5"	Main Rains Head	9" x 1 1/2"
Porch Posts	6" x 5"	Main Skirting Board	9" x 1 1/2"
Intermediate Studs below	3" x 5"	Porch Skirting	9" x 1 1/2"
Platform Line	4" x 2"	Sash Sills & Top Rails	3 1/2" x 1 1/2"
Intermediate Studs above	4" x 2"	Sash Sliding Sashes	3 1/2" x 1 1/2"
Platform Line	3" x 2"	Sash Bottom Rails	3 1/2" x 1 1/2"
Pillar Studs do do do	3" x 1 1/2"	Paints Sashes	4 1/2" x 1 1/2"
Bracing Front Lower Wall	4" x 2"	Paints Front Floor	4 1/2" x 1 1/2"
Trimmer Sills	3" x 2"	Glass throughout	4" x 2 1/2"
Collar Ties	5" x 1 1/2"	Paints	10" x 1 1/2"
Rider	3" x 1 1/2"	Porch Lathing (Cross)	7" x 3"
Parings	11" x 1 1/2"	bealers	4" x 3"
Open Ceiling Joists and	3" x 2"	Stair Posts	9" x 5"
Upper Floor Joists	7" x 2 1/2"	Planking 3/4" apart	3" x 2"
T & G Flooring	6" x 2 1/2"	Stair Treads	11" x 4 1/2"
T & G V Joisted Lining	6" x 2 1/2"	Stair Handrail	11" x 2 1/2"
Walls	6" x 8"	Stair Stanchions and	2 1/2" x 2"
		Handrail bracing	2 1/2" x 2"

FOR OTHER SCANTLINGS see DRAWINGS.

