

— V. R. —

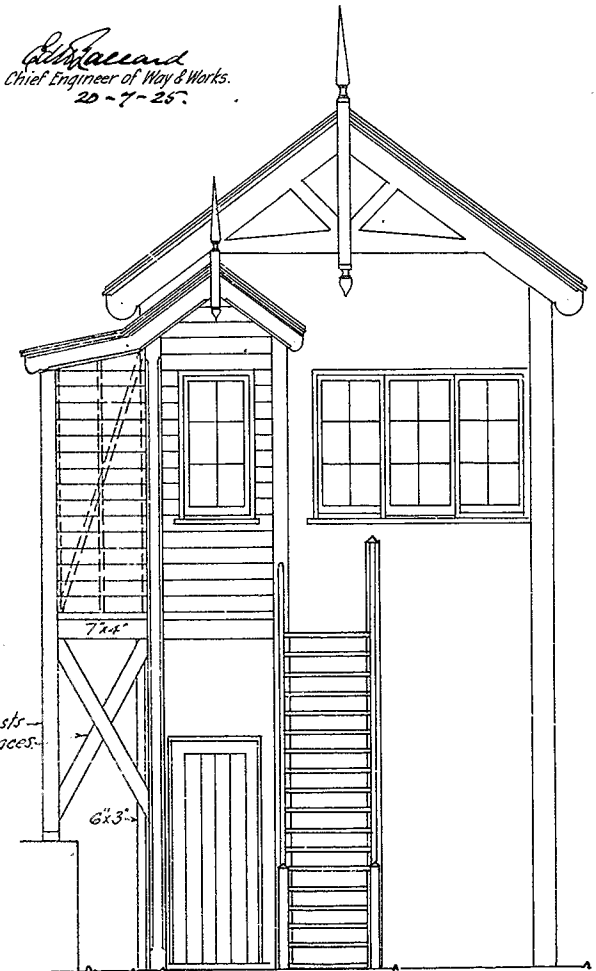
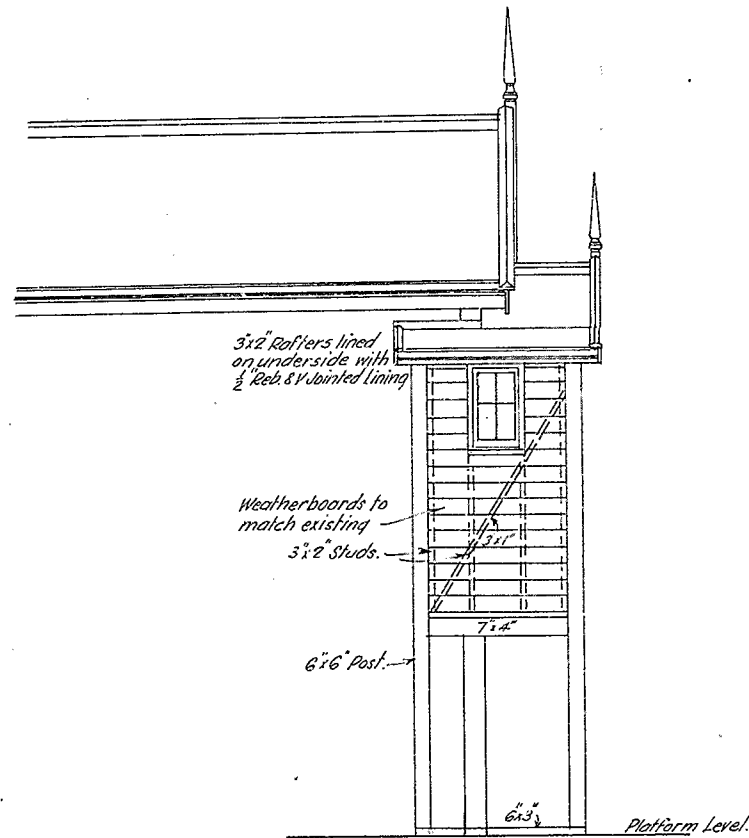
— BENDIGO. —

— SEWEDAGE OF STATION GROUNDS. —

— ADDITIONS TO "B" SIGNAL BOX. —

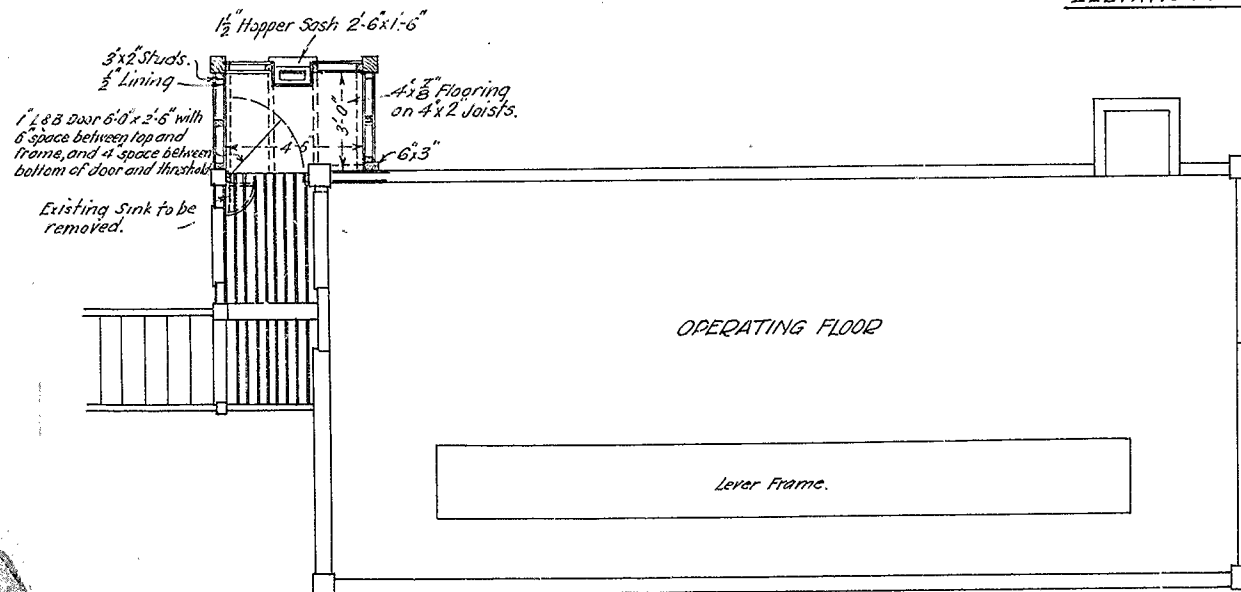
W.J.V. 15.7.25

*W. J. V.*  
Chief Engineer of Way & Works.  
20-7-25.



— ELEVATION TO CAR SHED. —

— ELEVATION AT DOWN END. —



*W. J. V.*  
Chief Architect.  
16/11/25 20.7.25

S.10.  
2353.25  
D.67.