

B. I. 2  
21097  
14 8 39

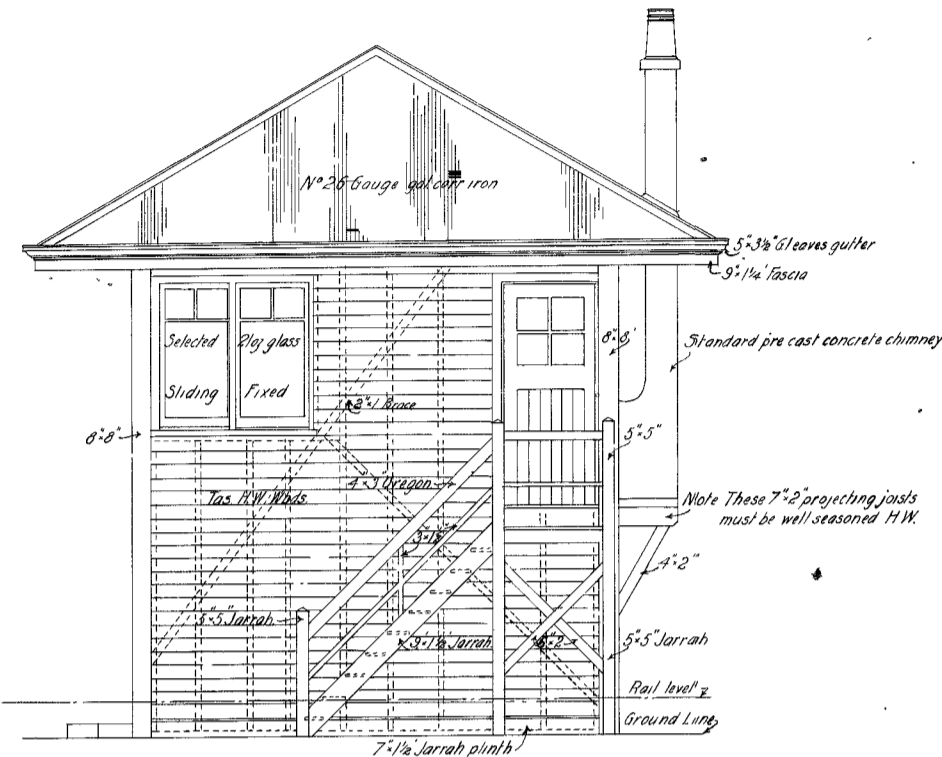
T.W.  
ADM.

- V.R. -  
- CHELTENHAM -  
- NEW SIGNAL BOX -

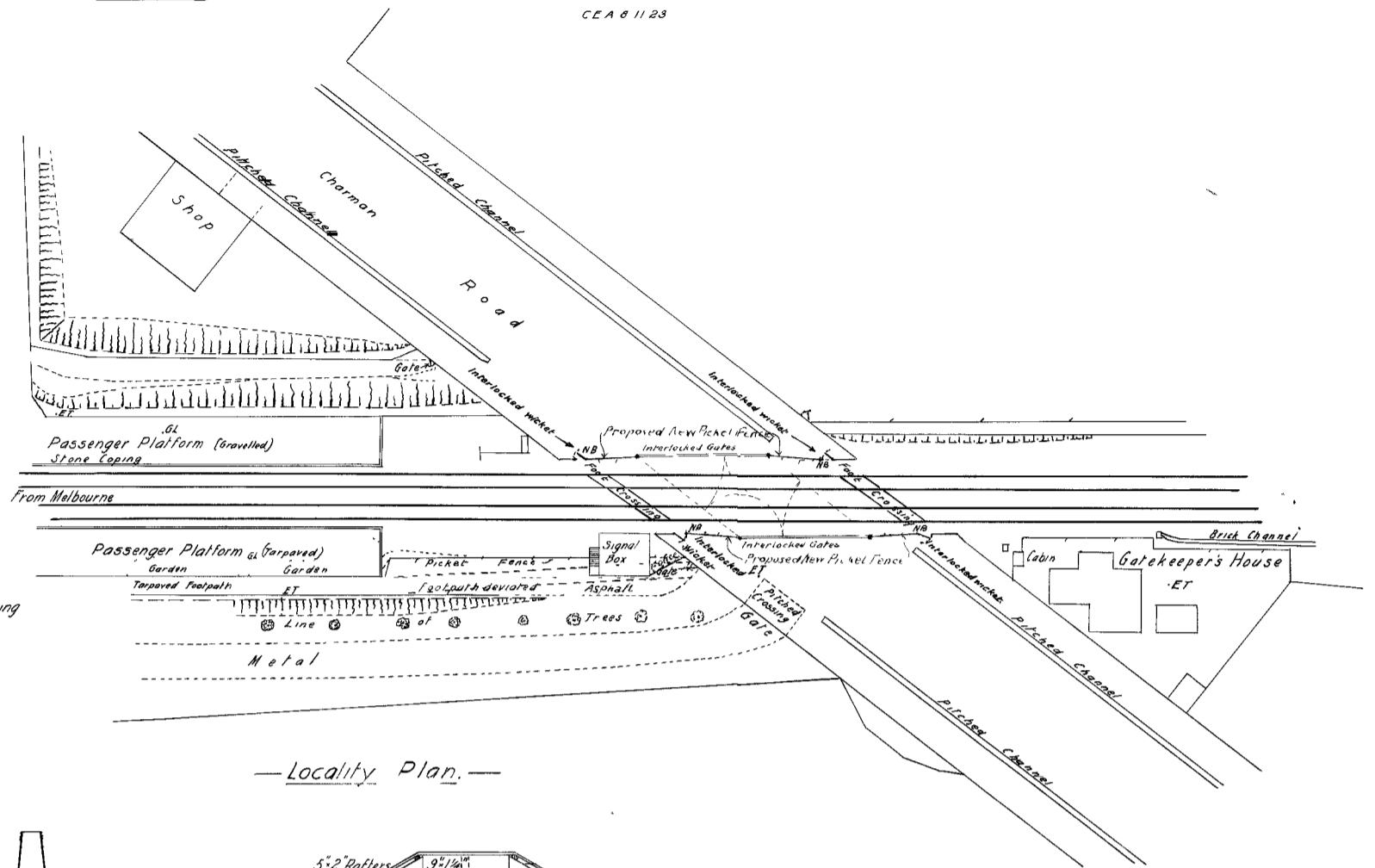
Scales 40 Ft to 1 Inch  
1/4" = 1'-0"  
1/2" = 1'-0"

W&W 9566/23

CEA 8 11 28

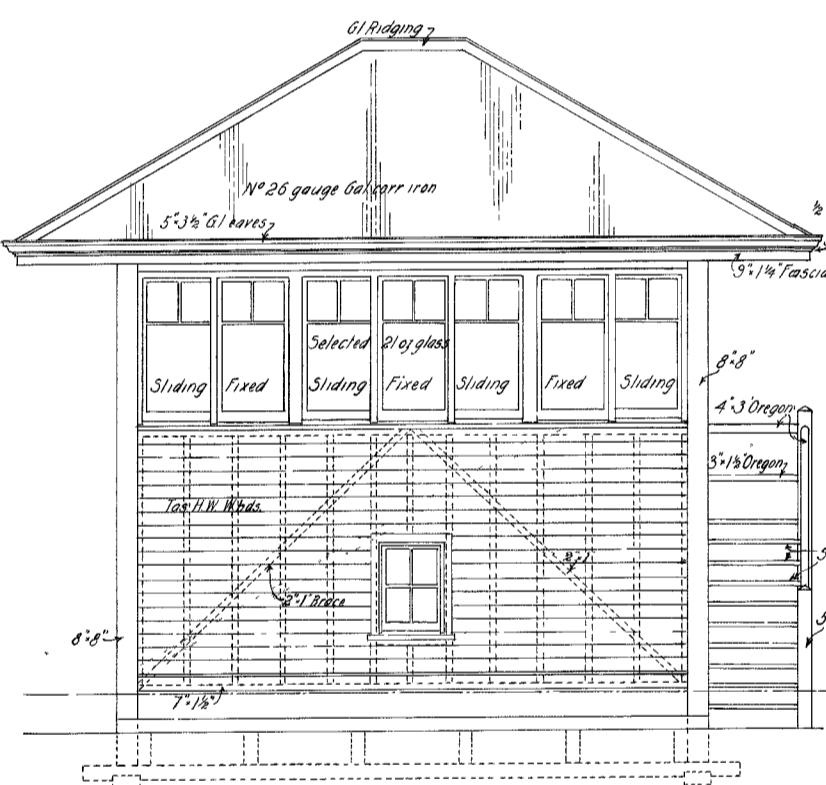


- End Elevation. -

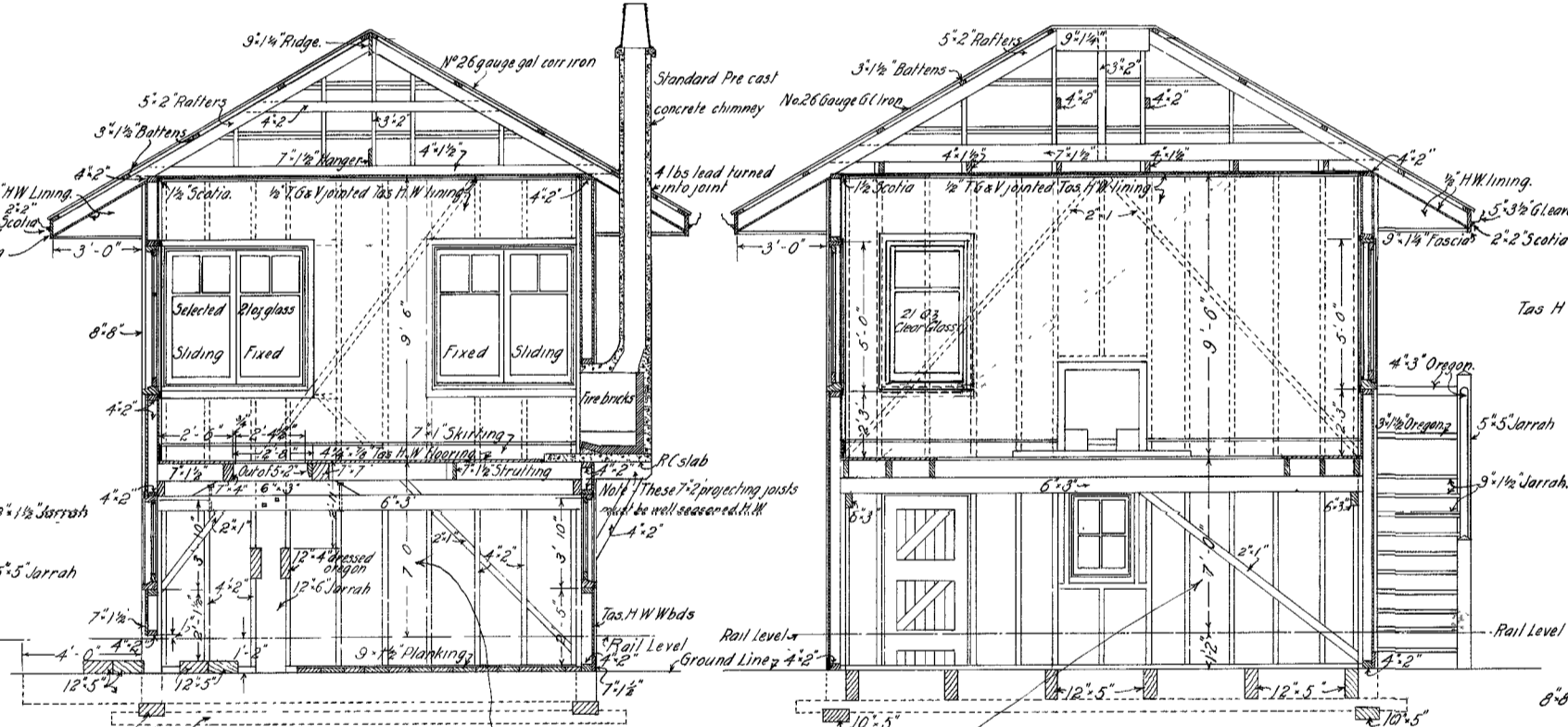


- Locality Plan. -

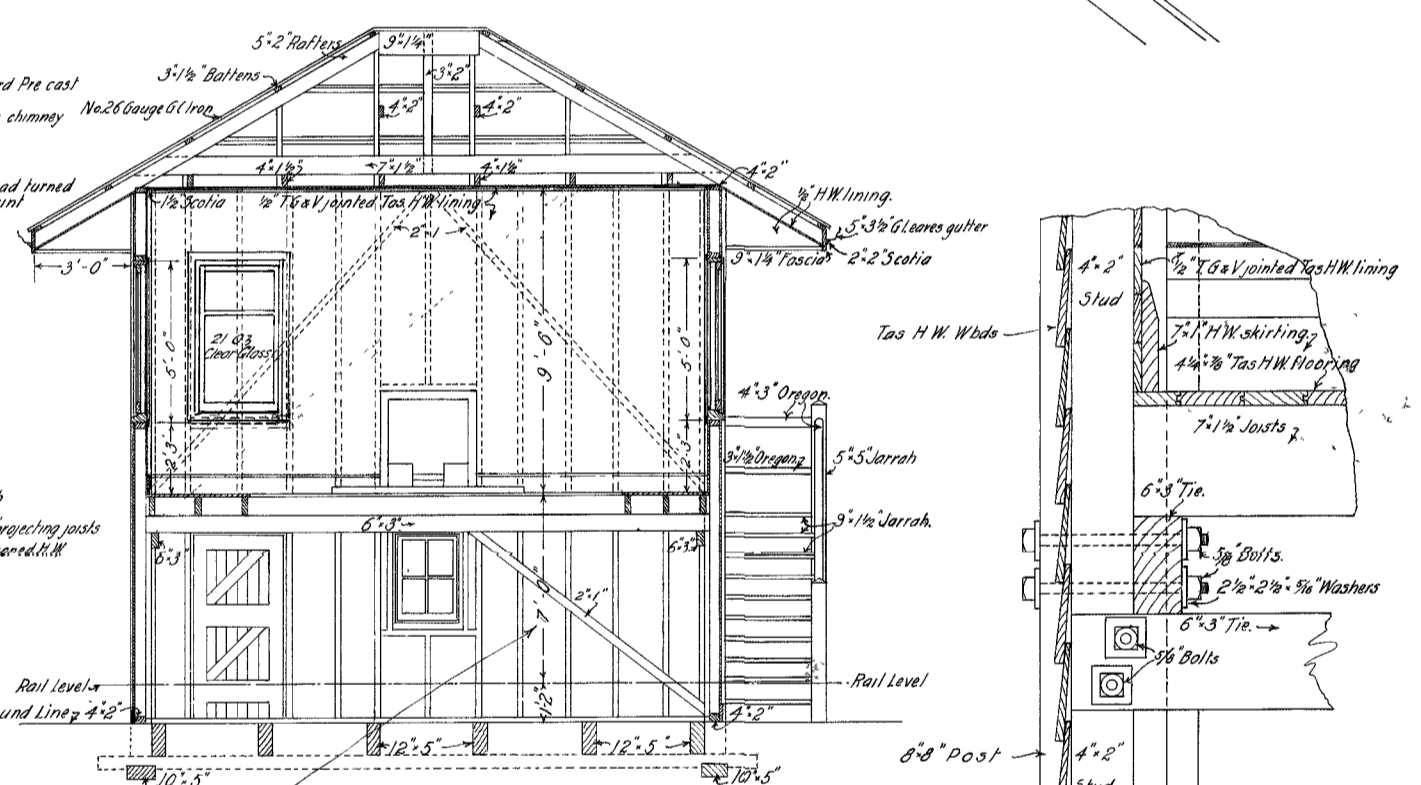
Note  
All timbers above ground to be of hardwood unless otherwise specified  
Timbers below ground to be Red gum or Jarrah  
All machine timbers & trimmers for lever opening to be of Oregon  
All bolts to be square headed & fitted with standard washers



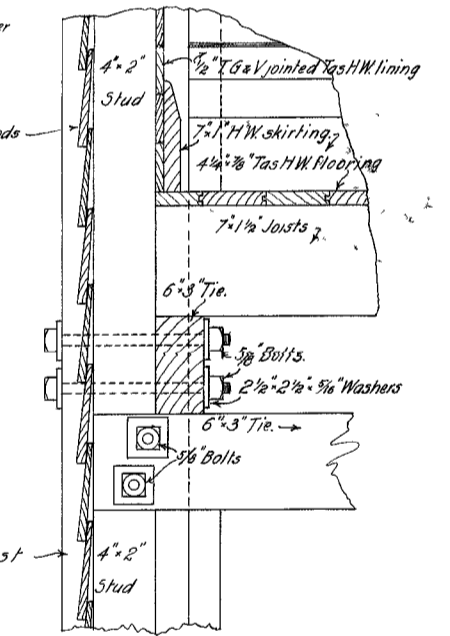
- Front Elevation. -



- Section A-A. -

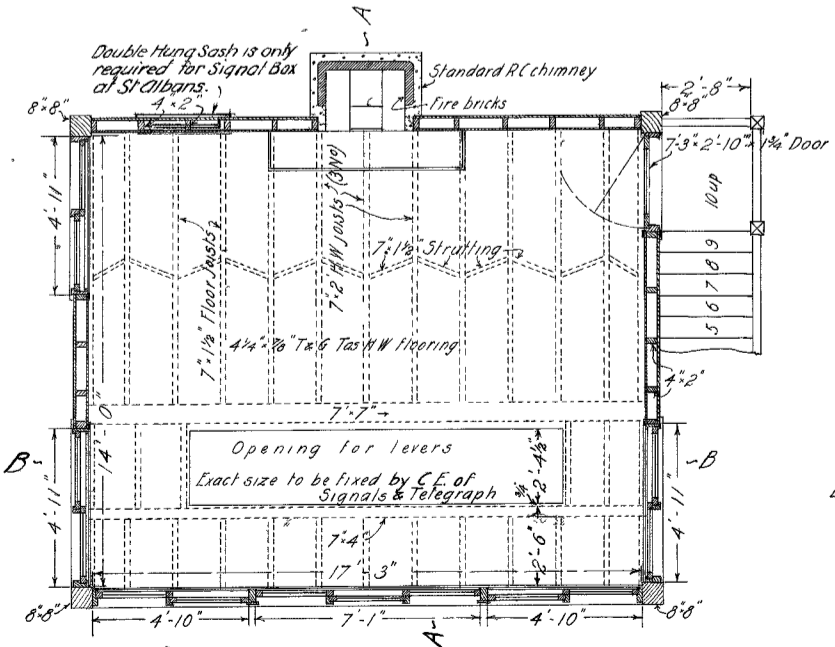


- Section B-B. -

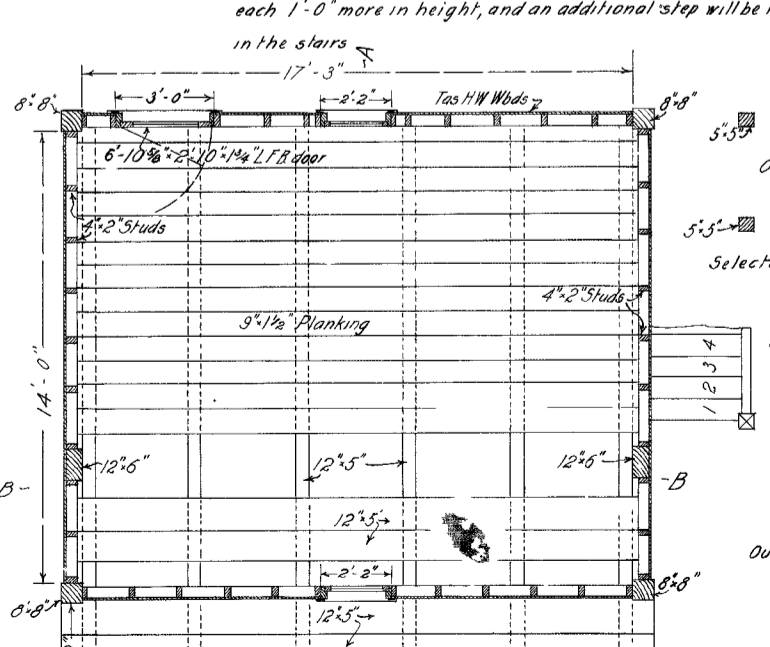


- Section. -

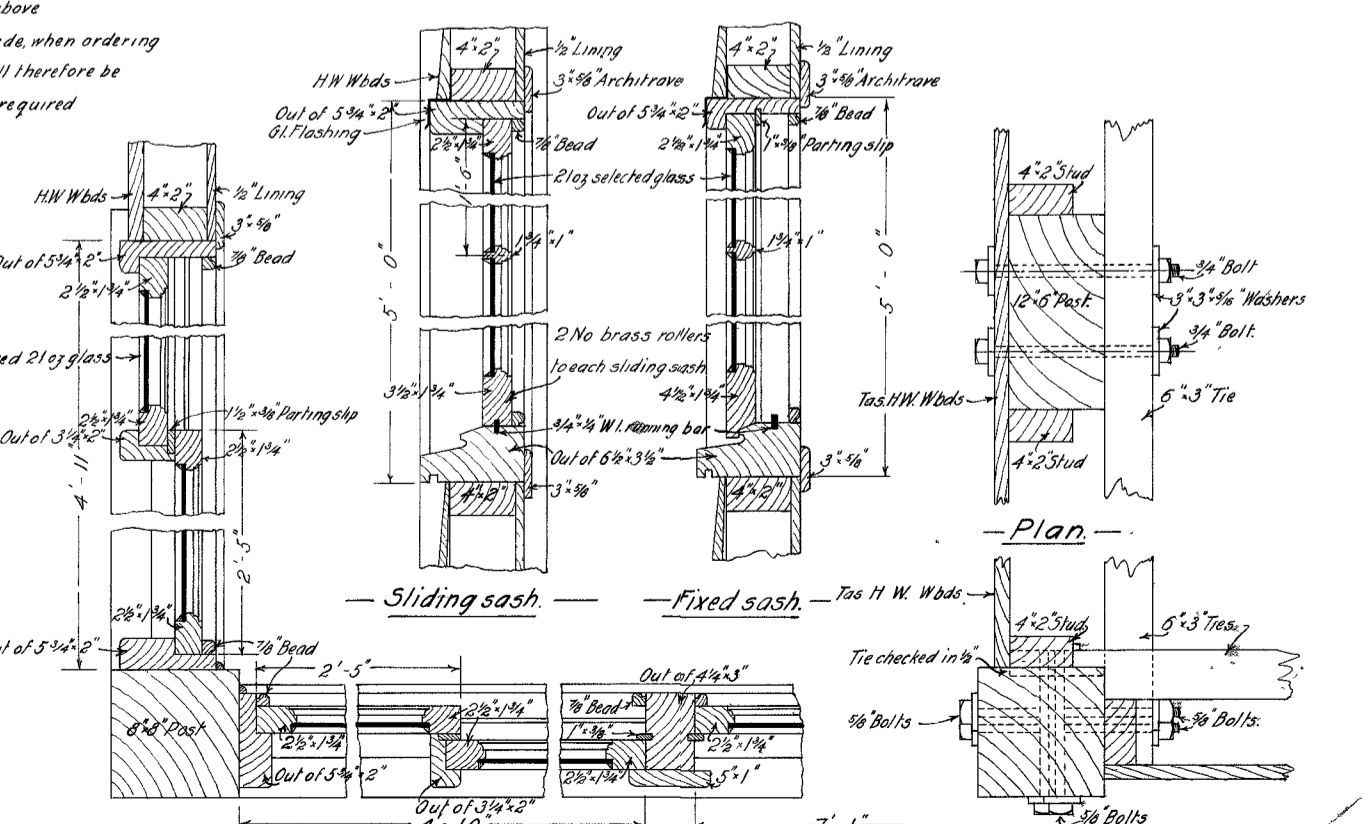
Note: - The height of the operating floor above the Rail level, scales 6'-0" but this measurement is to be 7'-0", as indicated above  
Attention is drawn to this, so that allowance may be made, when ordering materials. The door & the two windows in the lower floor, will therefore be each 1'-0" more in height, and an additional step will be required in the stairs



- Operating floor plan -



- Lower floor plan. -



- Sliding sash -  
- Fixed sash -  
- Plan -  
- Detail of sashes. -  
- Plan -  
- Detail of Horizontal ties. -

Approved  
Chief Engineer of Sigs & Tels. for Cheltenham  
for ST. ALBANS.

Edw Pawcett  
Chief Architect  
10.11.23