

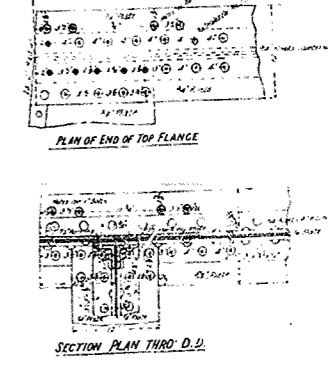
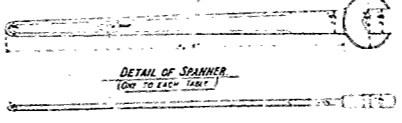
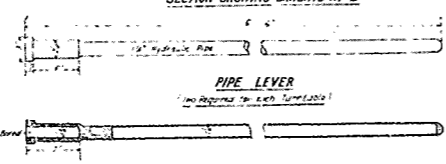
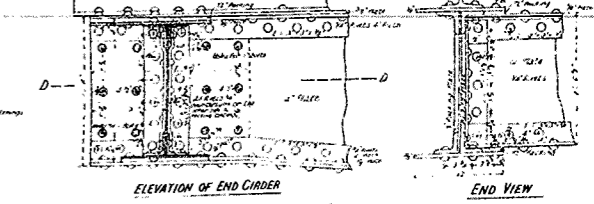
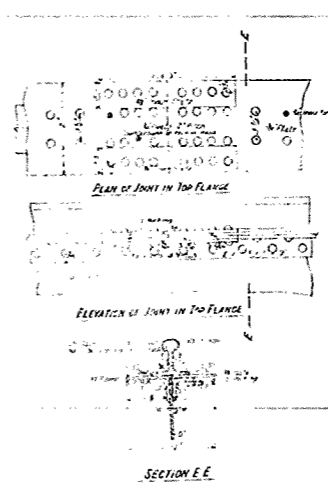
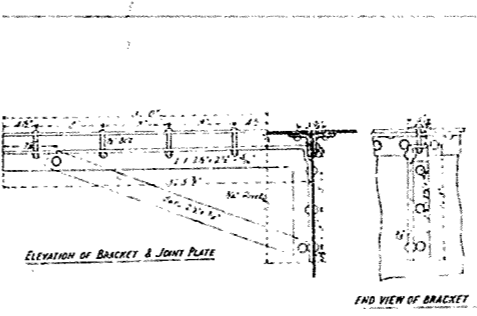
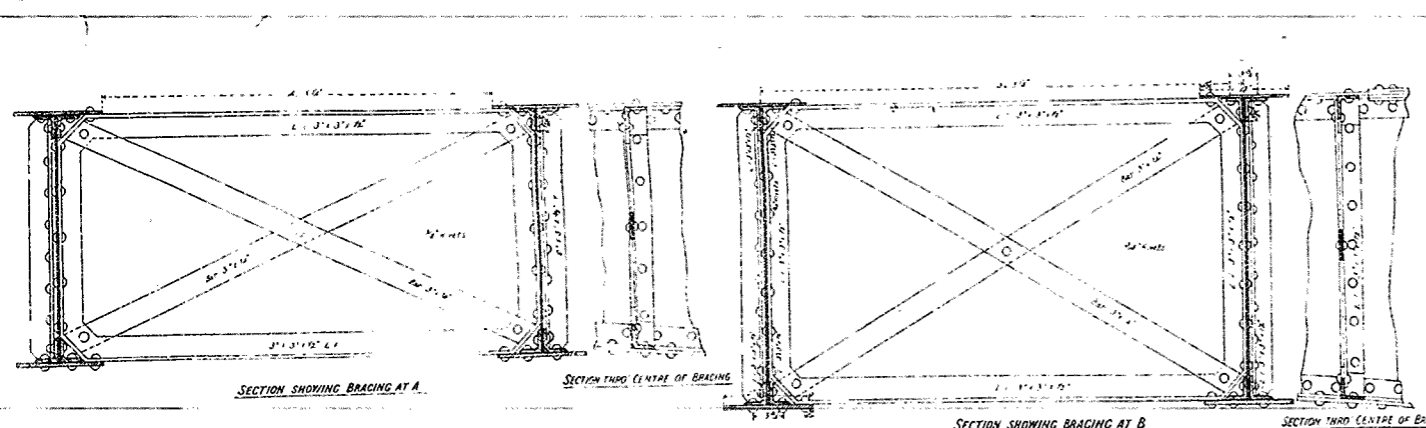
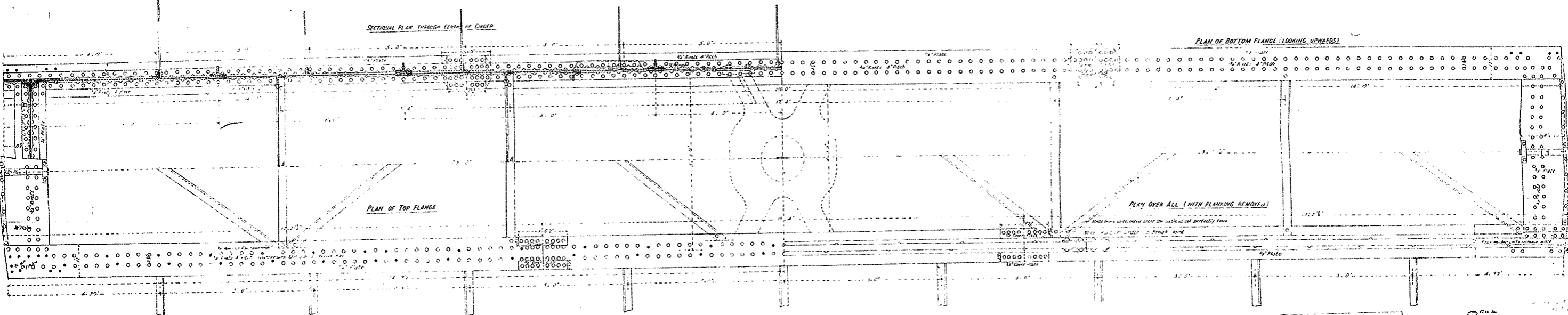
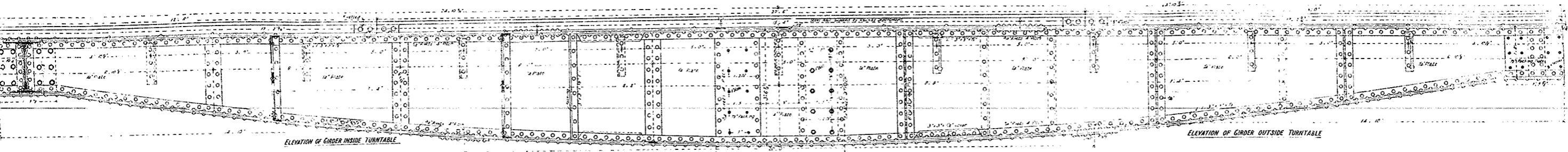
VICTORIAN RAILWAYS

DETAILS OF GIRDERS FOR 50FT TURNTABLE

CONTRACT NO
NO

SCALES 1" & 1/2" = 1'-0"

Note - Weights (by weight bridge).
Girders & centre casting 10T 3C.
Outriggers, bracket & wheels, pins & screw track 4T-16C



TT-91
A-17

50 FT TURN TABLE
GIRDERS

H-A-3
TT-91
A-17