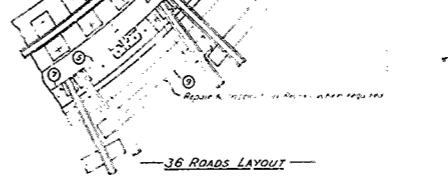
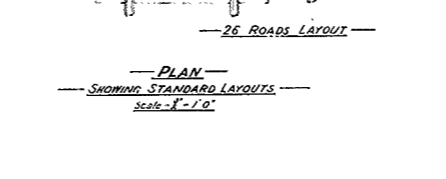
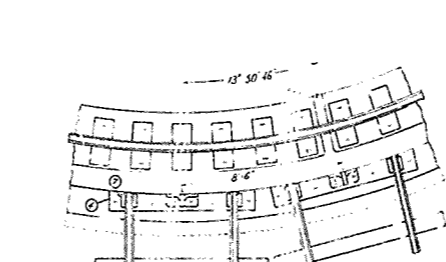
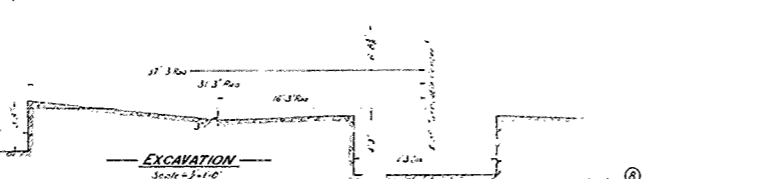
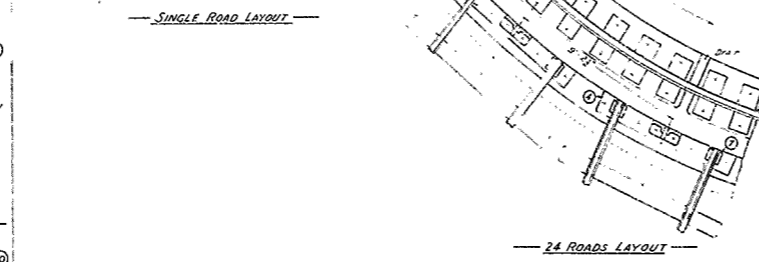
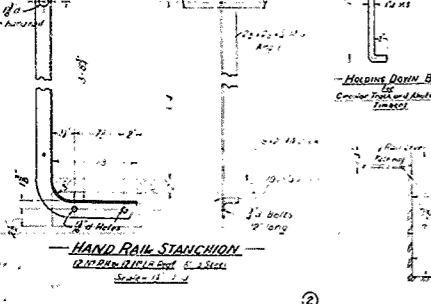
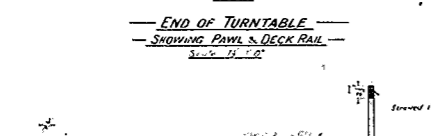
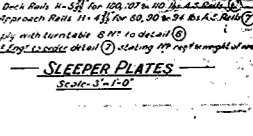
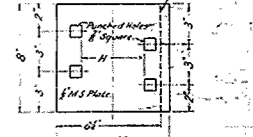
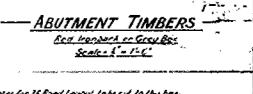
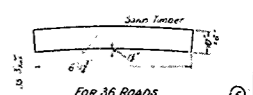
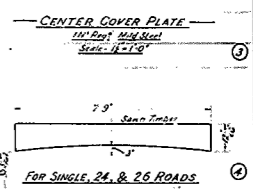
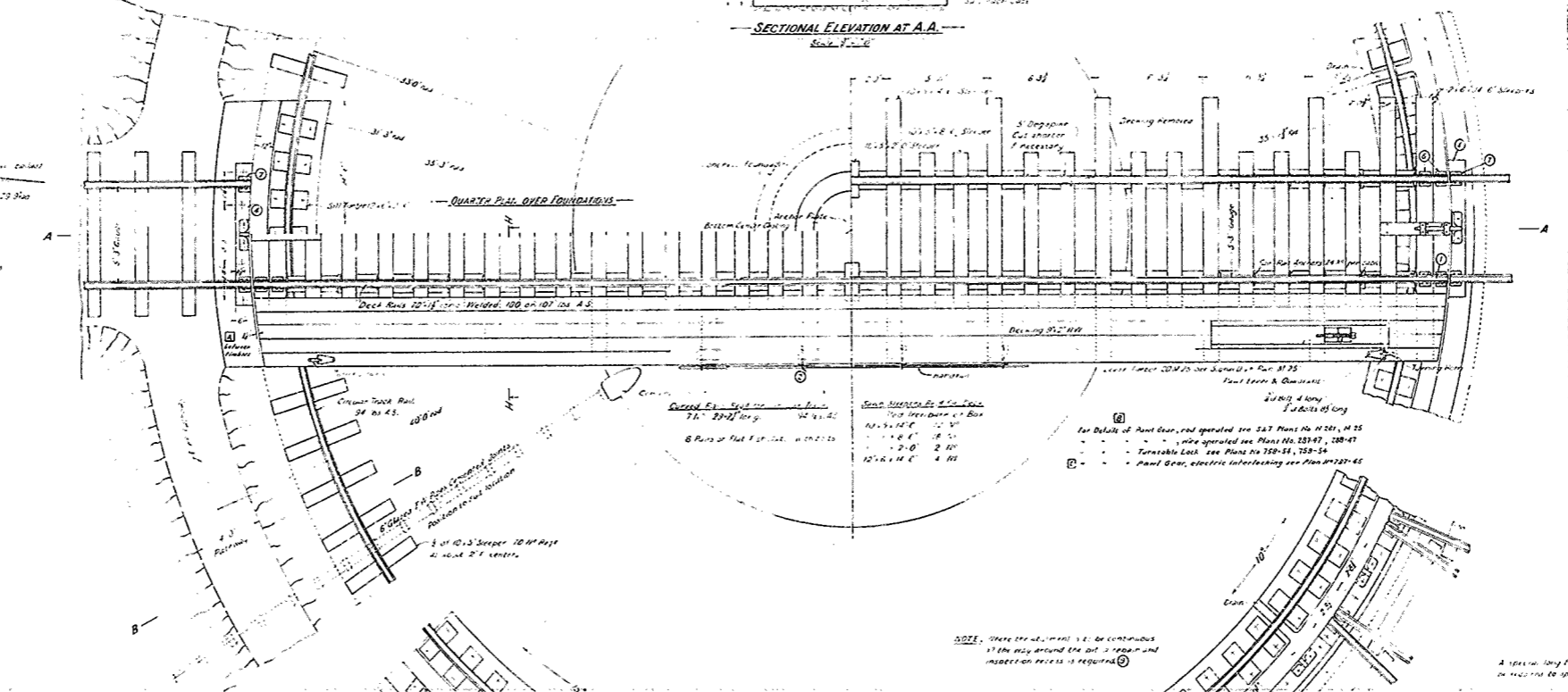
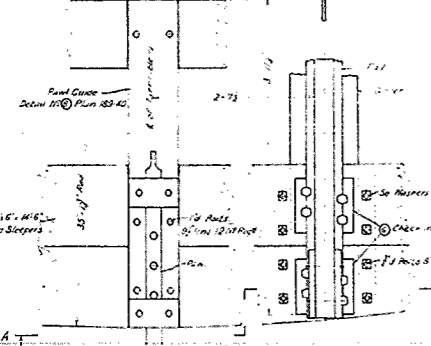
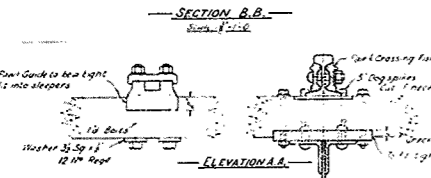
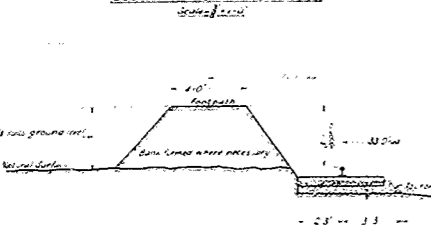
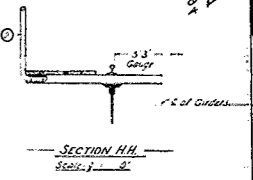
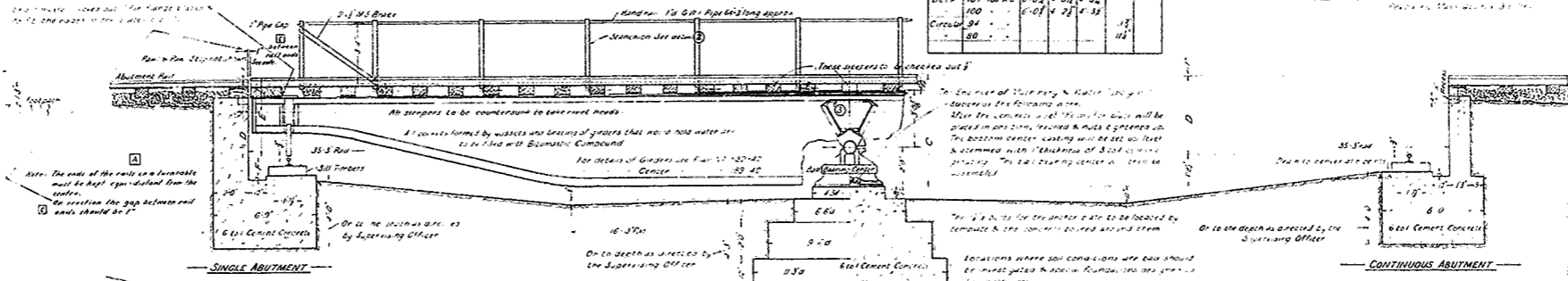
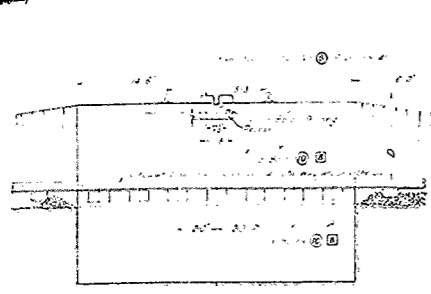


32204

Roll	Weight of Roll	Dimension			
		C	D	E	F
Deck	107 lbs 45	6'-0"	4'-3 1/2"	4'-3 1/2"	18"
Circle	94	6'-0"	4'-7 1/2"	4'-3 1/2"	18"
	80				18"

NOTE: All parts of this structure shall be constructed in accordance with the specifications of the Department of Public Works, City of New York.



DATE	REVISION	BY	ENG'G
12/12/12	REVISED METHOD OF PAWL TO CLEAR	...	...
12/12/12	LENGTH OF CURVED PAWL FOR CURVED TRACK	...	...
12/12/12	WELDS ADDED TO TURNABLE BEFORE PAWL & RAILS	...	...
12/12/12	WELDS ADDED TO PAWL END AND LEGS	...	...
12/12/12	WELDS ADDED TO TURNABLE AFTER PAWL & RAILS	...	...
12/12/12	WELDS ADDED TO TURNABLE AFTER PAWL & RAILS	...	...

**V-R**  
**70 FT TURNABLE**  
GENERAL ARRANGEMENT, FOUNDATIONS & DETAILS.  
Scale: 1/2" = 1'-0"

Chief Civil Engineer  
City of New York  
TT-112  
A-17  
649-112