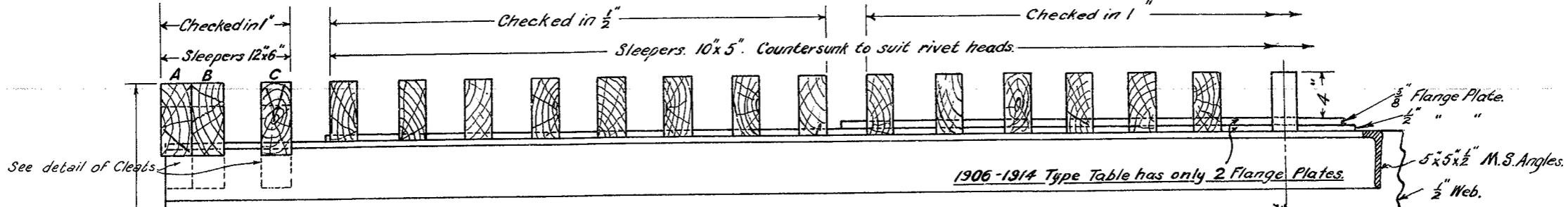
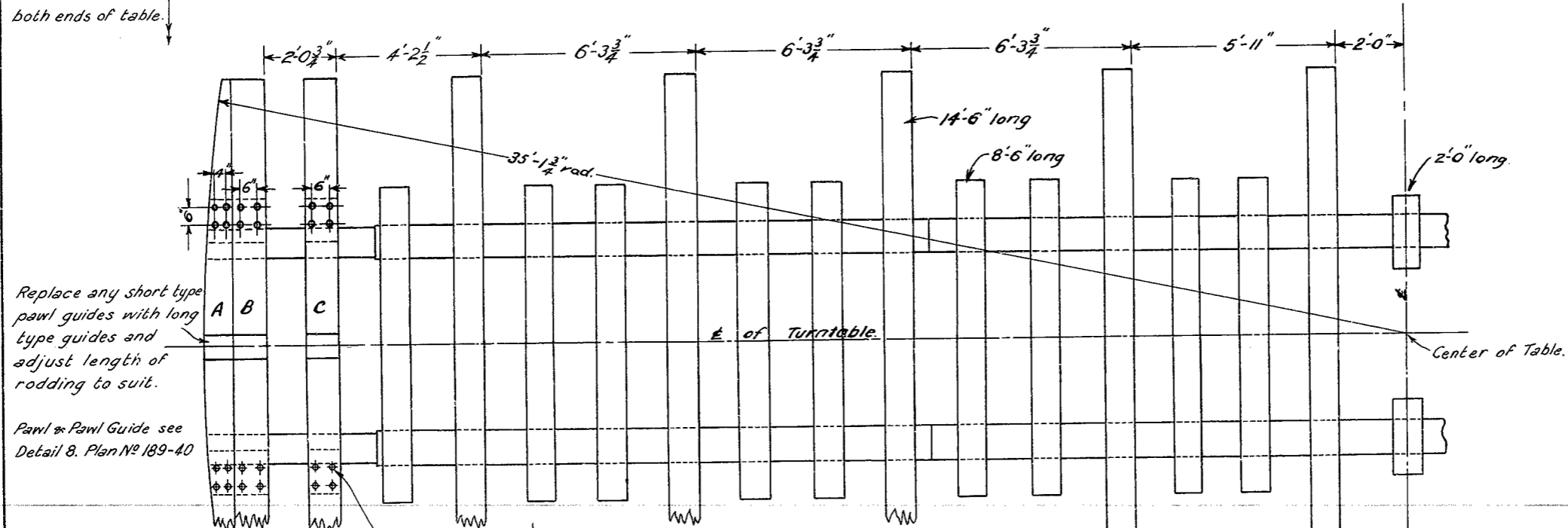


I.W.P.
J.N.E.
Room 204



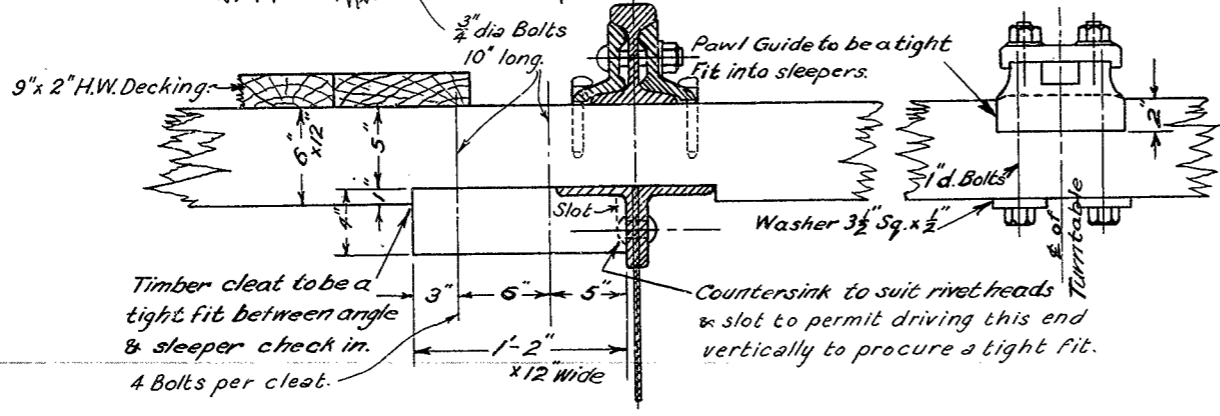
Distance to the underneath of the outrigger wheels to be the same at both ends of table.

DIAGRAM OF SLEEPERS
Scales: Horizontally $\frac{3}{8}'' = 1'-0''$ Vertically $\frac{1}{2}'' = 1'-0''$



Replace any short type pawl guides with long type guides and adjust length of rodding to suit.

Pawl & Pawl Guide see Detail 8. Plan No 189-40



CLEATS FOR SLEEPERS A, B & C.
Scale: $\frac{1}{2}'' = 1'-0''$

PLAN
Scale: $\frac{3}{8}'' = 1'-0''$

V - R.
70 FT. TURNTABLE
RE-SLEEPING OF 1906-1914 TYPE

Scales: $\frac{3}{8}''$ & $\frac{1}{2}'' = 1'-0''$

Chief Civil Engineer <i>M.H.</i>	T.T. - 113	PLAN No 639/44
Drawn by G.P.	Checked by J.W.C.	Corros. No C-18
Eng. of M&V.S.		

32837
J.27.4