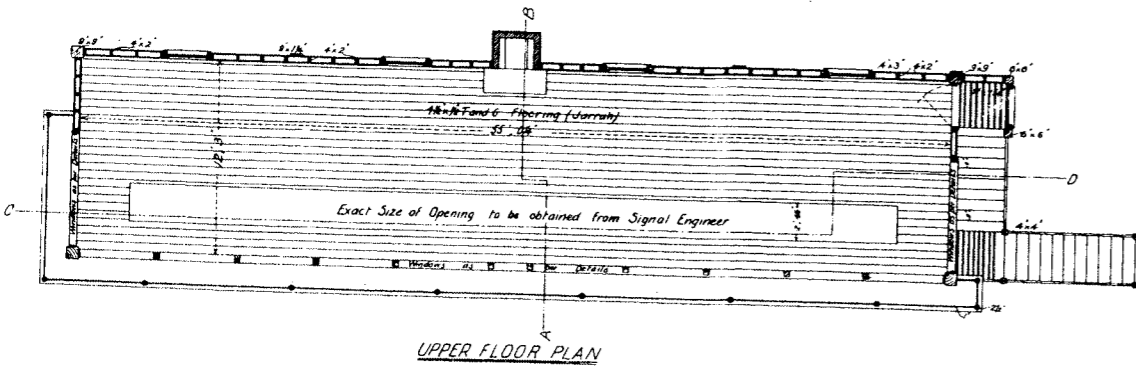
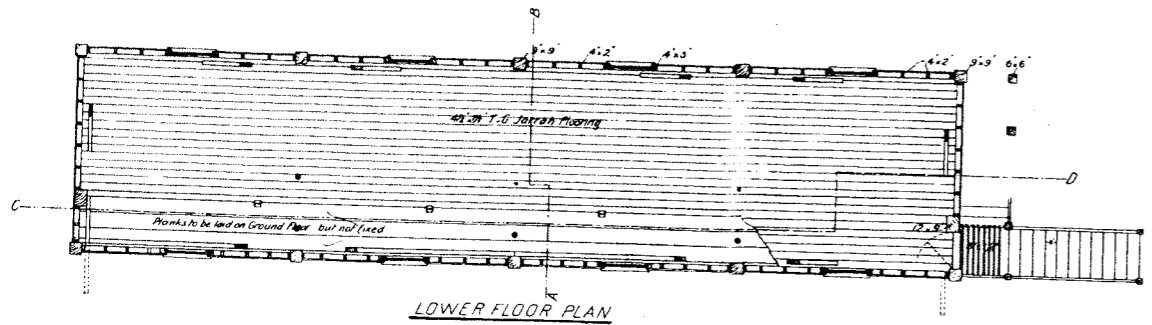


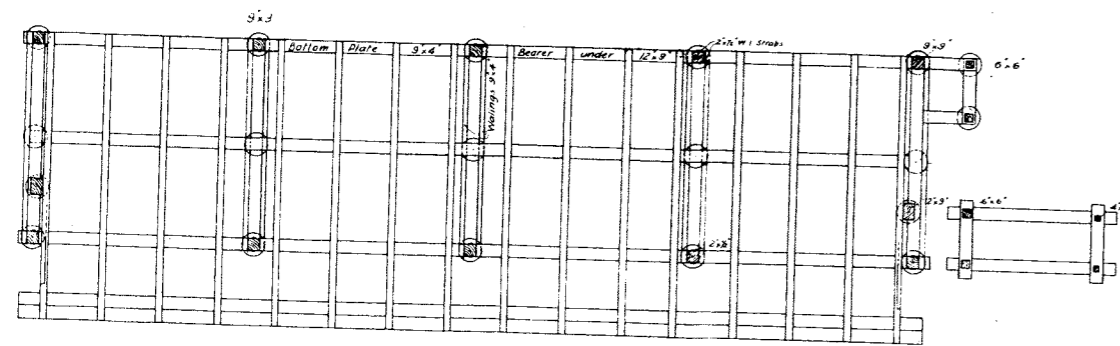
—VICTORIAN RAILWAYS—
 —BALLARAT STATION—
 —SIGNAL BOX 'A'—
 —Scale 4ft to an Inch—
 J.L.A. 8140



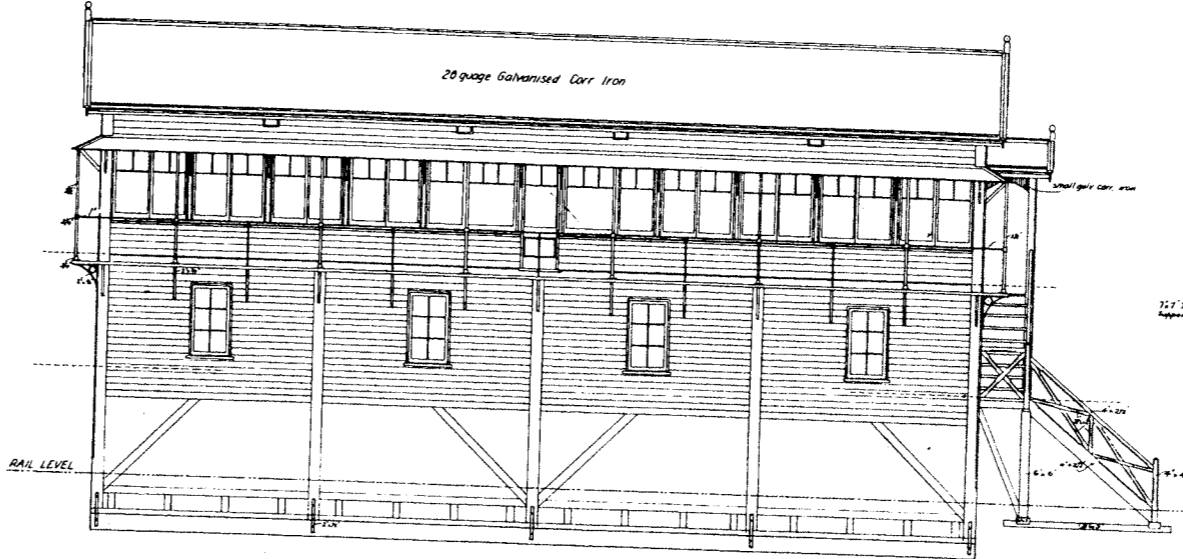
UPPER FLOOR PLAN



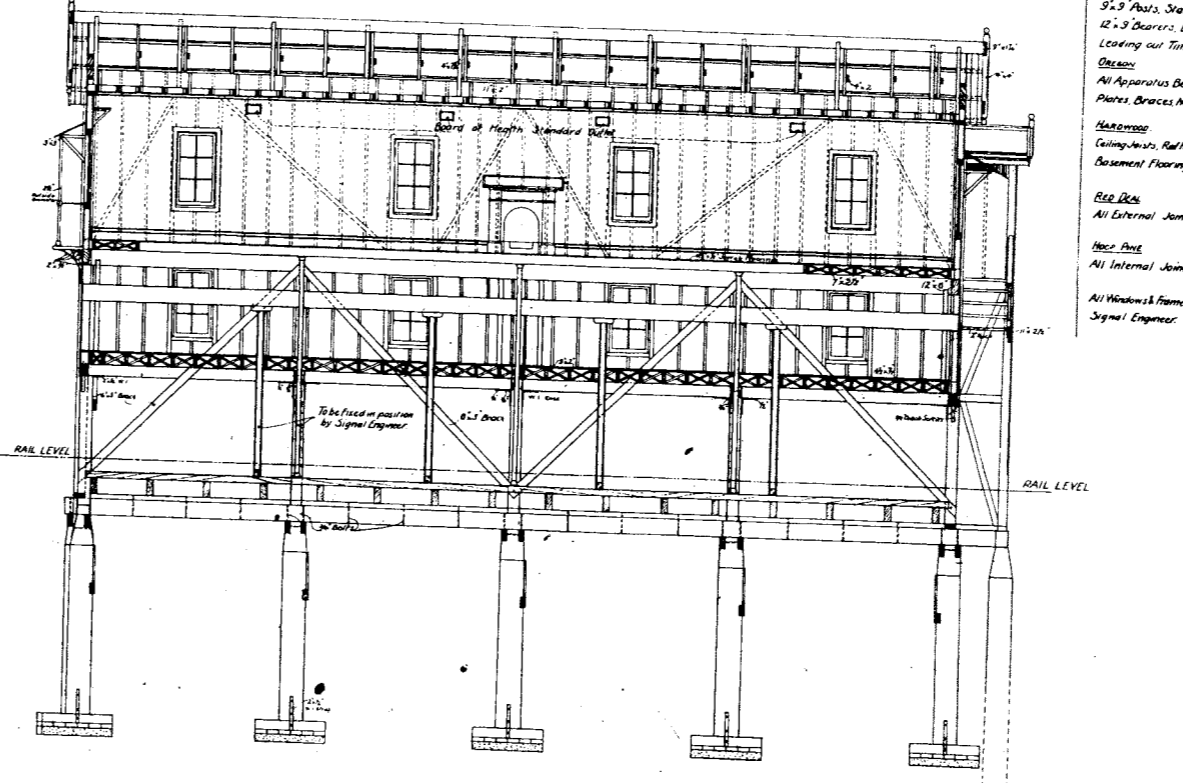
LOWER FLOOR PLAN



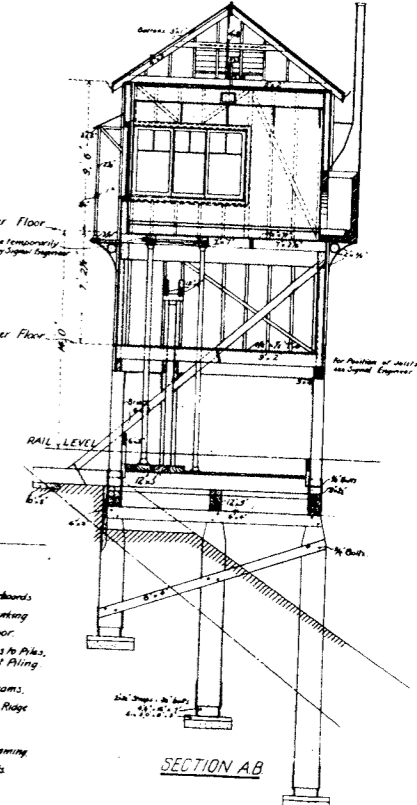
FOUNDATION PLAN



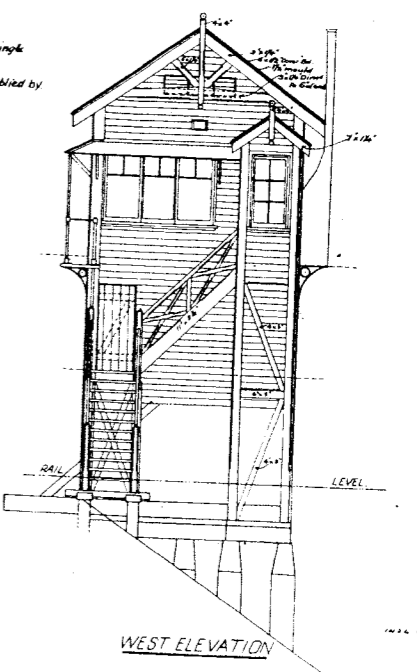
NORTH ELEVATION



SECTION C-D



SECTION A-B



WEST ELEVATION

- TIMBERS**
- JARROLD
 - Upper & Lower Flooring Weatherboards
 - 3x3 Posts, Stairs, 12x5 Planking
 - 12x3 Beams, Balcony Floor
 - Leading out Timbers, Braces to Piles, 8x3 Sheet Piling
 - Obolow
 - All Apparatus Beams, Tie Beams, Plates, Braces, Main Timbers, Ridge
 - Holloway
 - Galling-Joints, Railers, Collars, Framing
 - Basement Flooring, Floor Joists
 - Red Oak
 - All External Joiners Work
 - Here Pine
 - All Internal Joiners Work, Lathing
 - All Windows Frames will be supplied by Signal Engineer.