

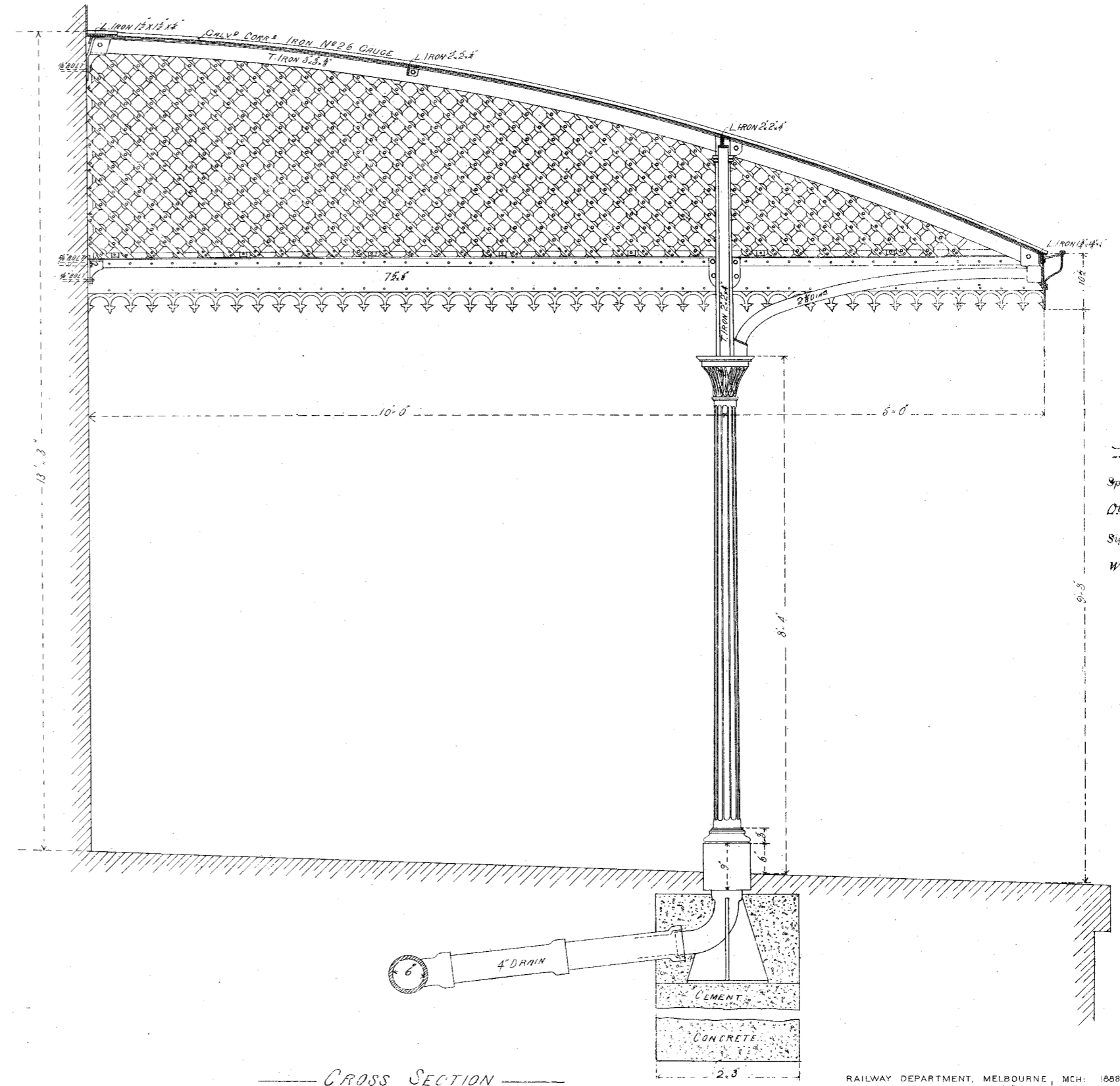
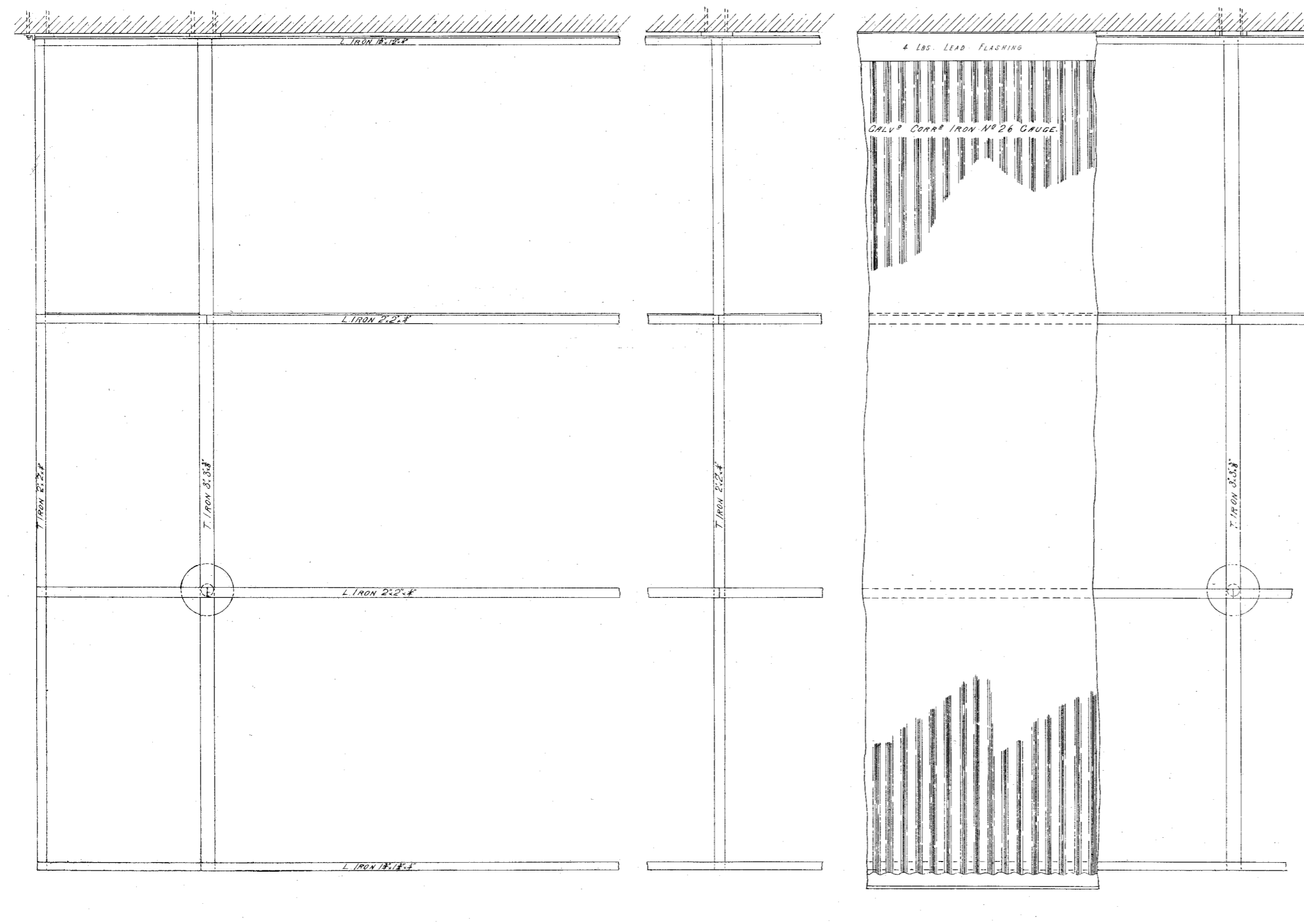
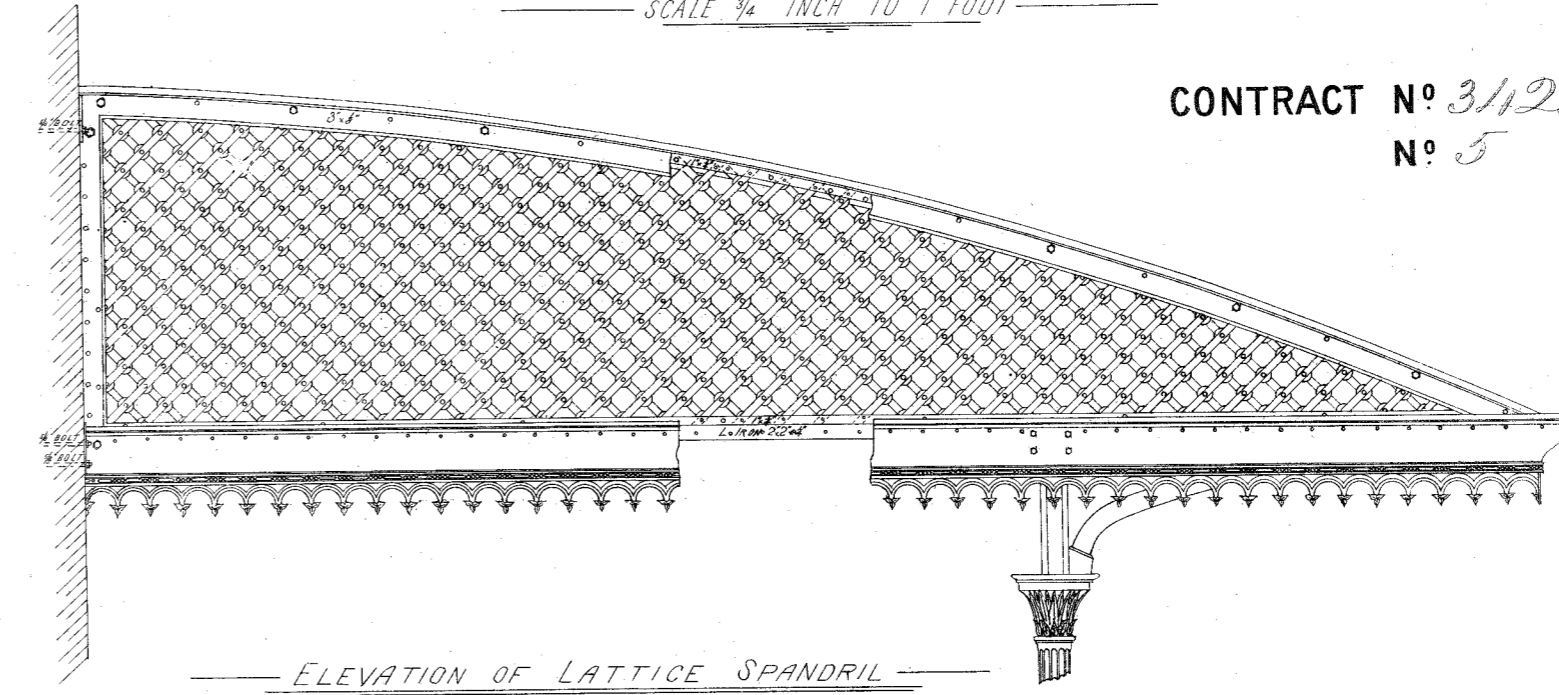
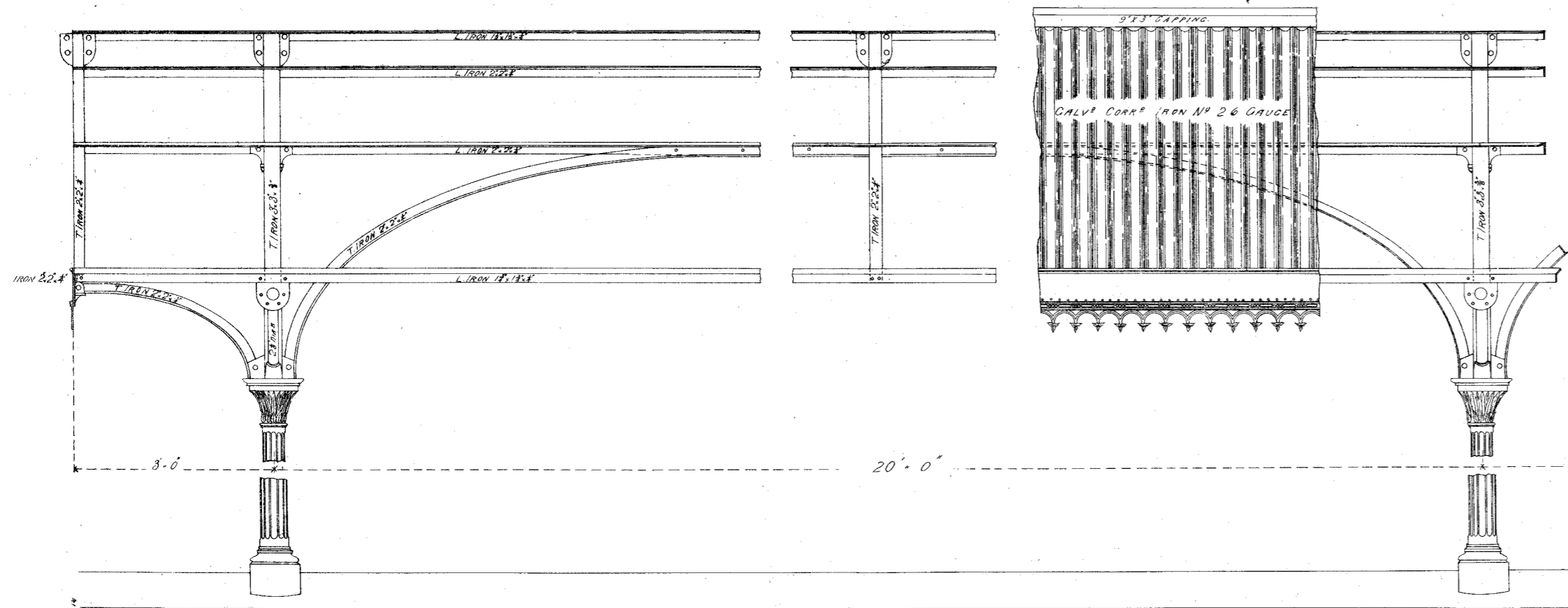
VICTORIAN RAILWAYS.

Melbourne & Coburg LINE  
Brunswick STATION

Details of Ironwork for Verandah

SCALE 1/4 INCH TO 1 FOOT

CONTRACT N<sup>o</sup> 3122  
N<sup>o</sup> 5



PART PLAN.

CROSS SECTION

Approved by this as one of the drawings referred to in the  
Specification and Contract upon which... based  
Disseminated... day of July 1888.  
Signature of Contract Officer...  
Witness to Signature...  
Date... 21.7.88.

SEE FOR EXISTING  
31/7/88  
262/119/88

VICTORIAN RAILWAYS  
PLAN ROOM  
JAN 2 1914