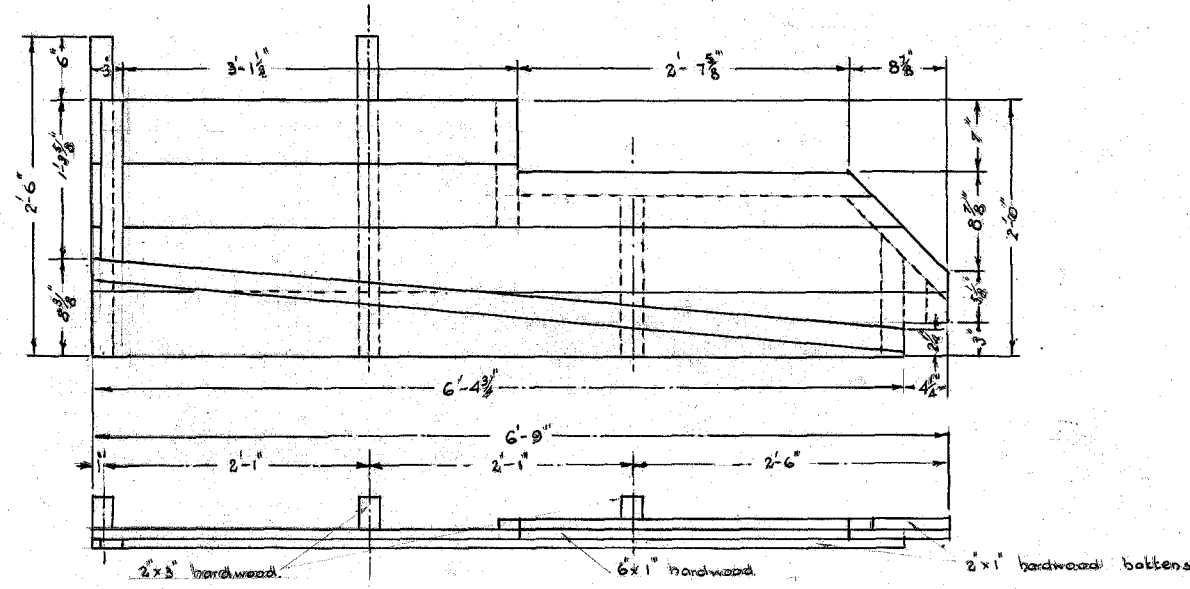
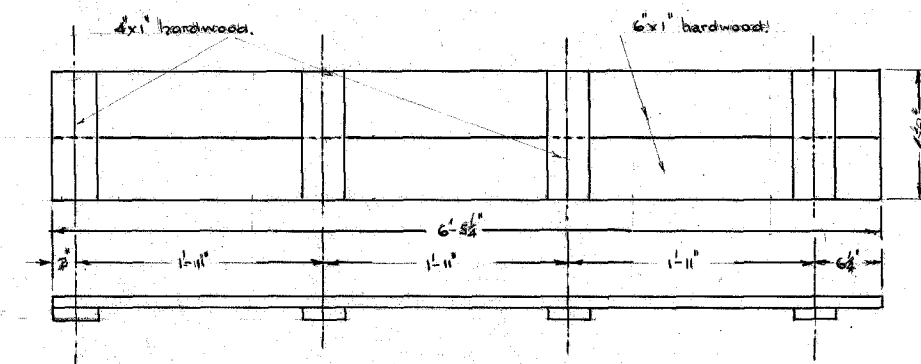


ASSEMBLY OF FORMWORK FOR BEAM



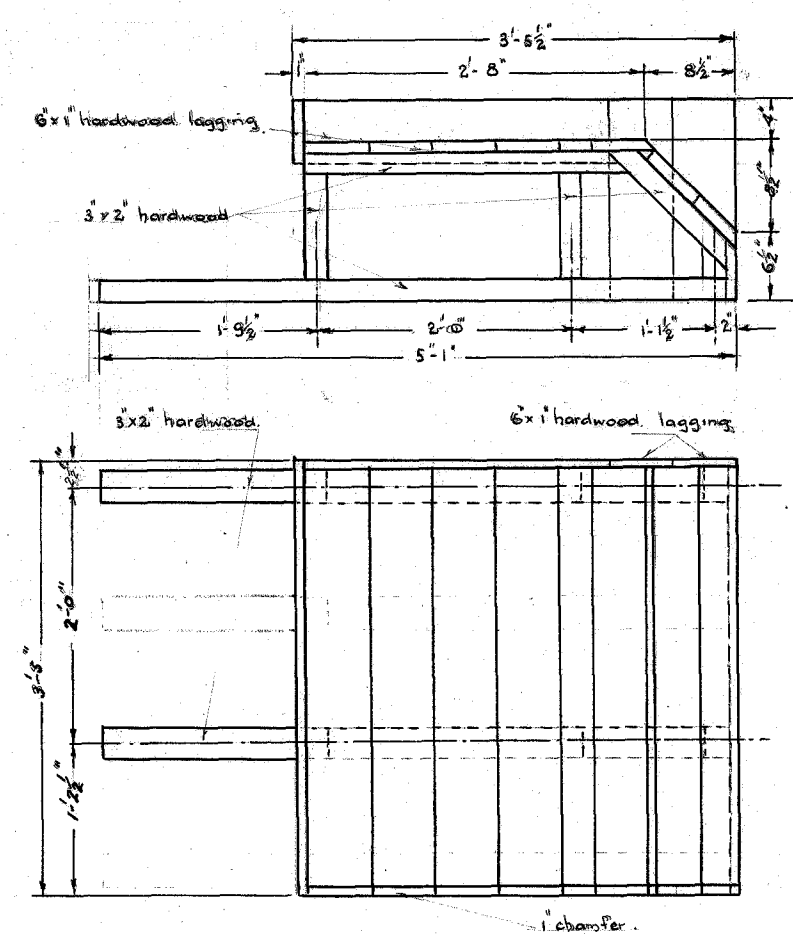
FORMS FOR SIDES OF BEAM

AS SHOWN 1 - OFF
OPPOSITE HAND 1 - OFF



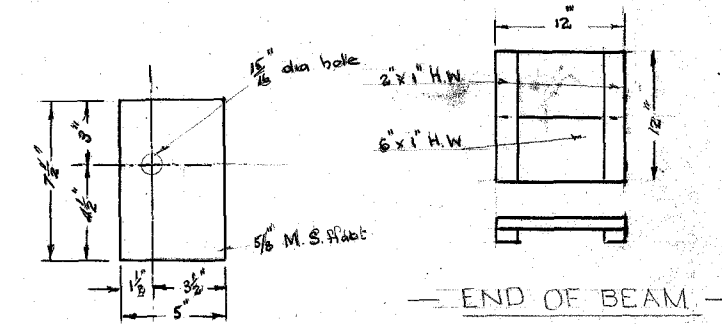
FORMS FOR BOTTOM OF BEAM

AS SHOWN 1 - OFF



FORMS FOR SAFETY PLATFORM

AS SHOWN 1 - OFF
OPPOSITE HAND 1 - OFF

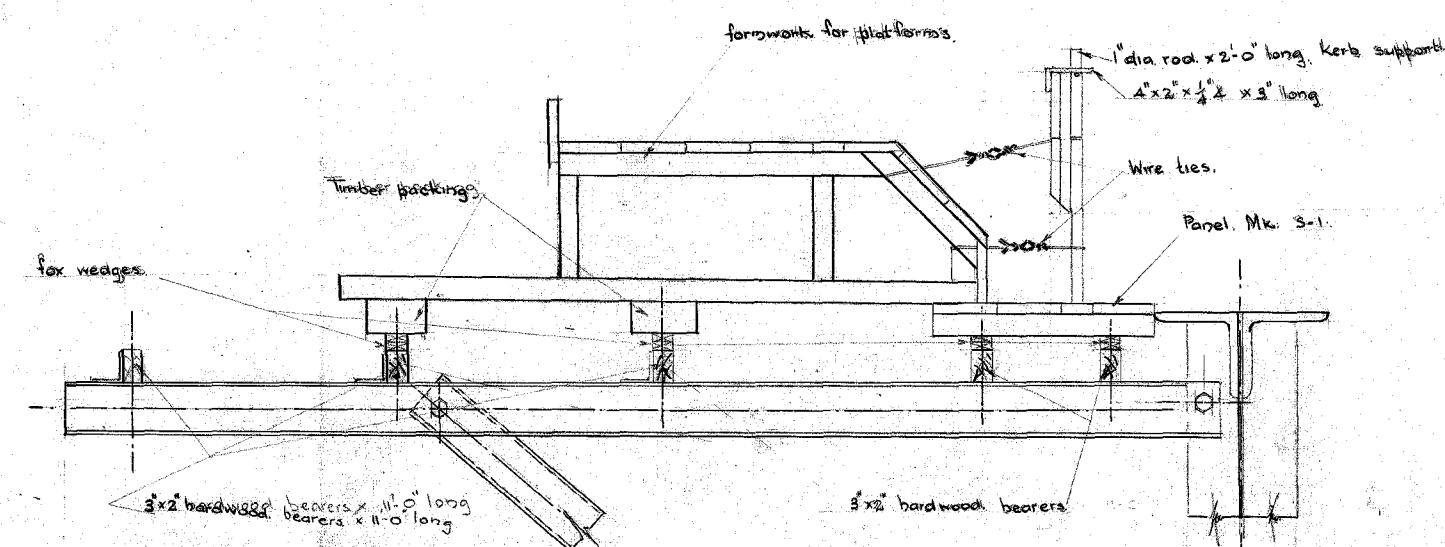


END OF BEAM

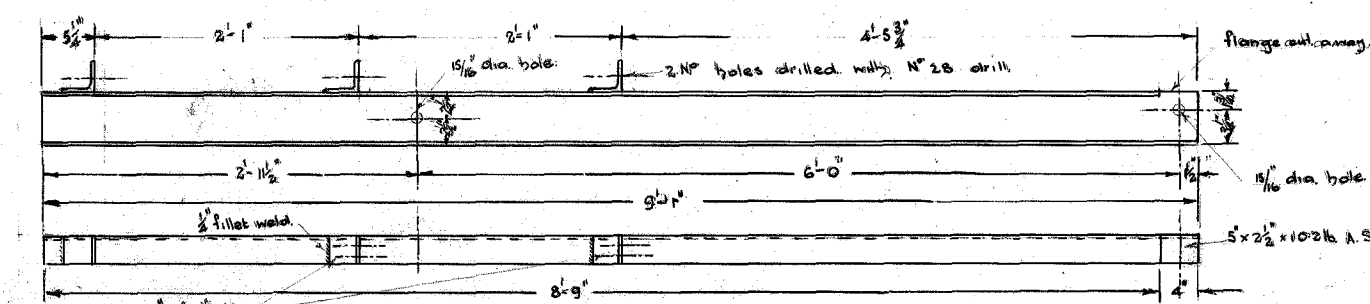
1 - OFF

CLAMPS

3 - OFF

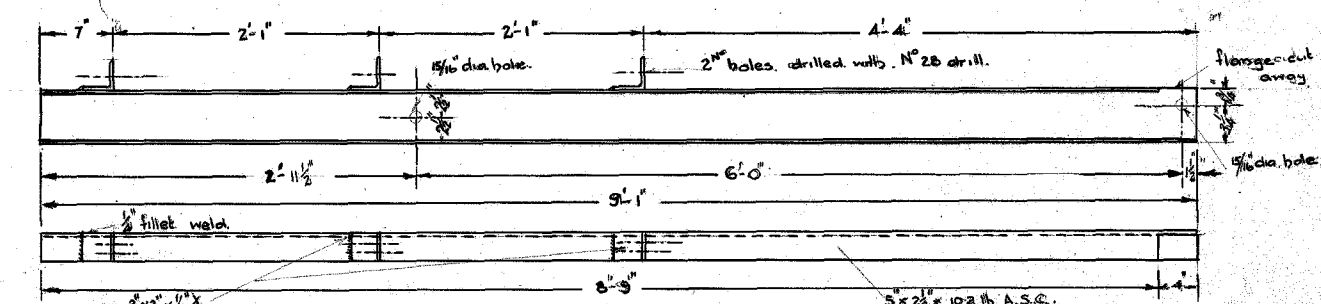


SECTION THROUGH PLATFORM FORMWORK



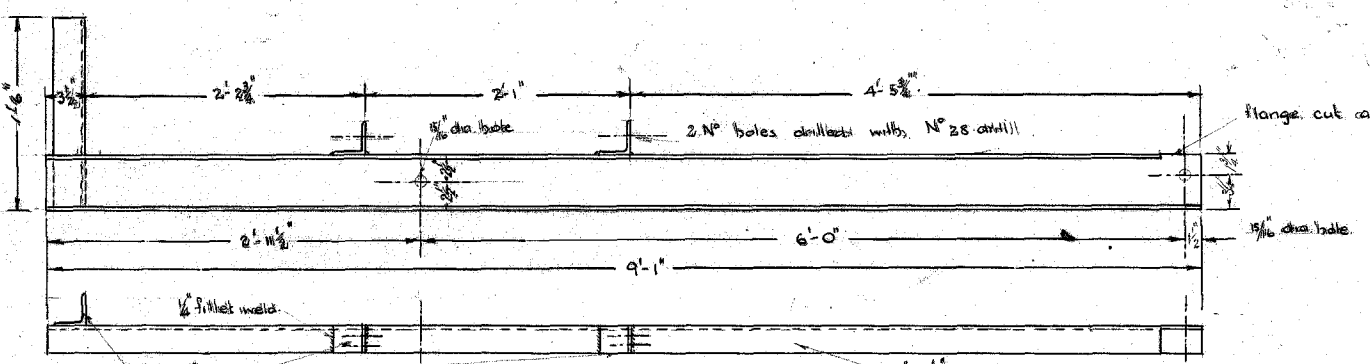
CHANNEL SUPPORTS MK A

1 - OFF



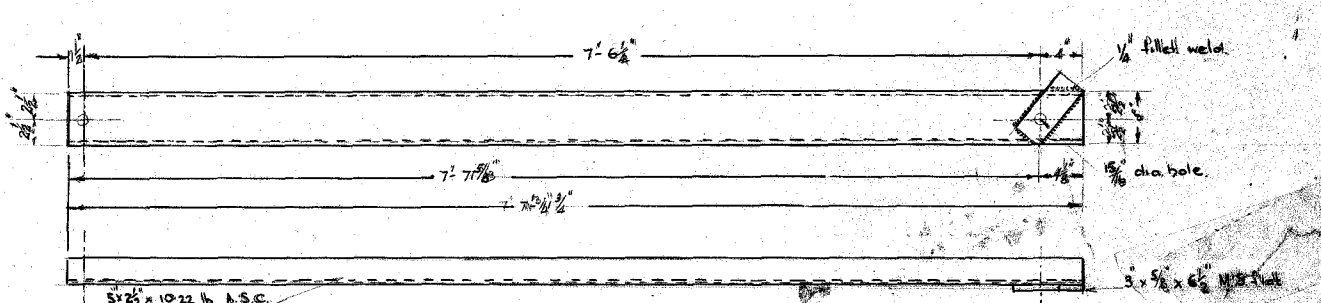
CHANNEL SUPPORTS MK C

1 - OFF



CHANNEL SUPPORTS MK B

1 - OFF



CHANNEL STRUTS

3 - OFF

CASTLEMAINE TO MARYBOROUGH
DEVIATION AT JOYCE'S CREEK
BRIDGE OVER JOYCE'S CREEK
FORMWORK FOR DECK OF 60'-3" SPANS
SHEET NO 2
Scale 1 Inch = 1 Foot

DRAWN BY: H.L.S. SUPERINTENDING ENGINEER

1574