

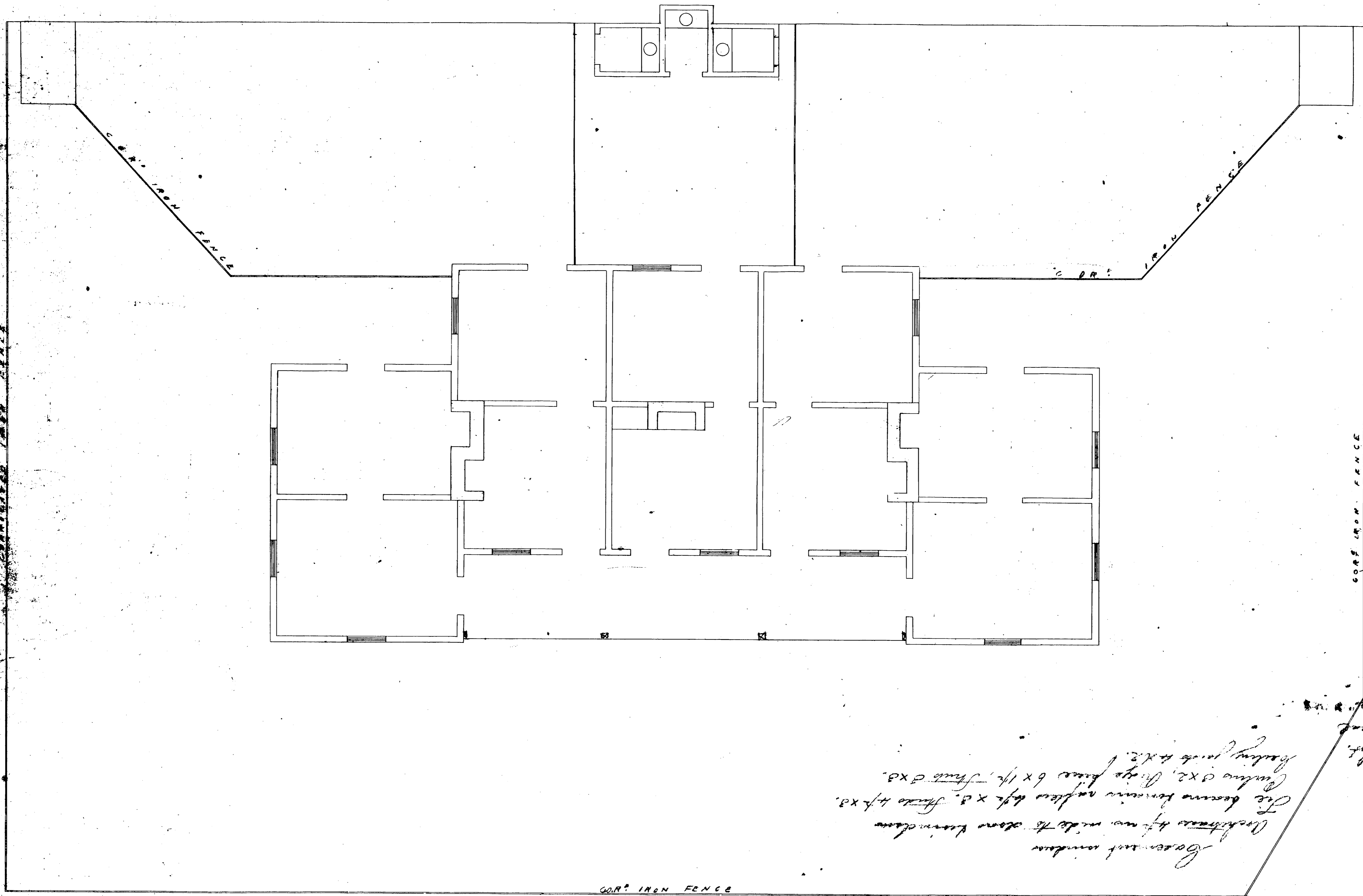
VICTORIAN RAILWAYS.

MELBOURNE & RIVER MURRAY RAILWAY.

CONTRACT, N^o 106
DRAWING, N^o 1

Quarters

*erected with alterations
at Lancaster Road*



This is one of the Plans referred to in the Specifications upon which I based my Tender dated the 27th day of August 1861.
Wm Murray
26/8/61

*Government order
The beams remain as they are 4 1/2 x 8. Floor 4 x 8.
Curtain 3 x 2. (Type) 6 x 1 1/2. Floor 2 x 8.
Flooring 1/2 x 2.*

*Plan for 9 no. low
The beams remain as they are 4 1/2 x 8.
The beams remain as they are 4 1/2 x 8.
The beams remain as they are 4 1/2 x 8.*

COPY COPY
PLAN ROOM

