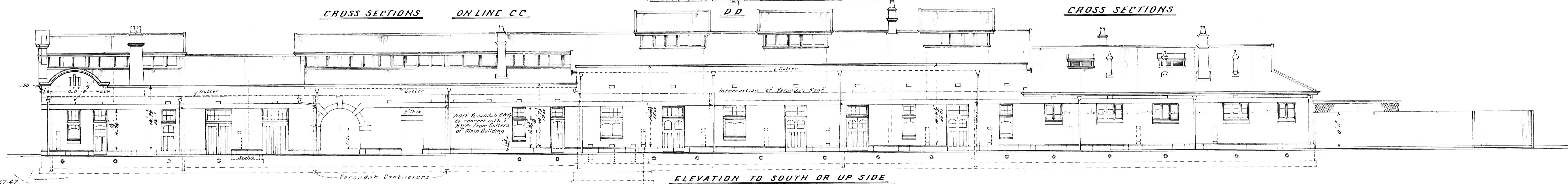
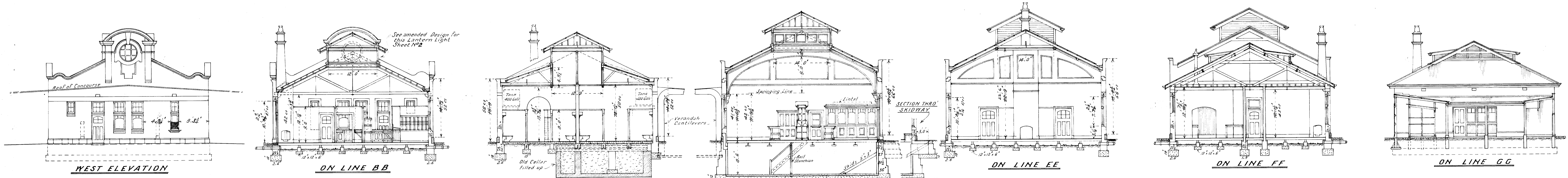


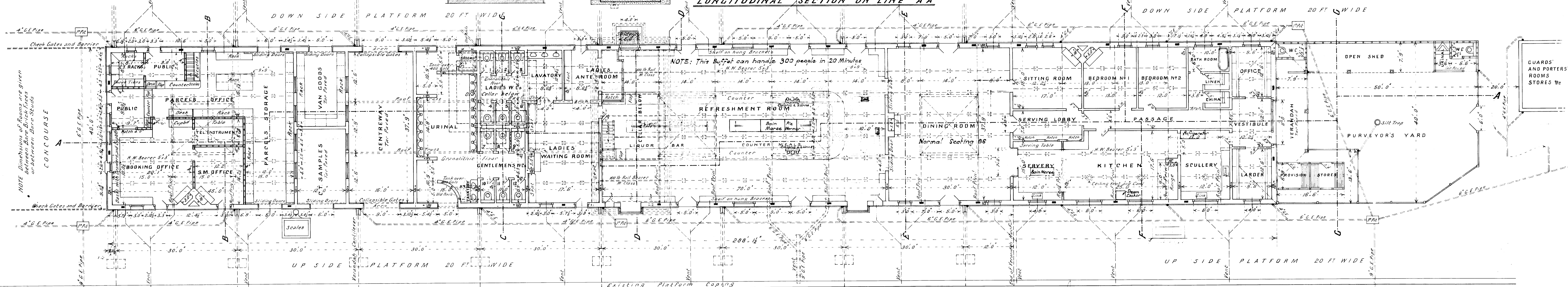
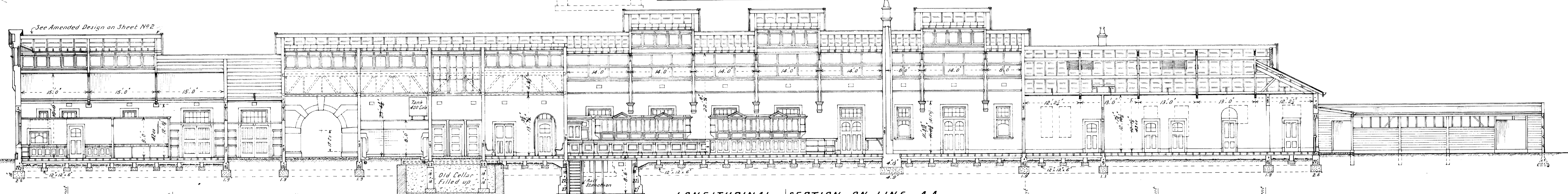
WARRAGUL STATION BUILDINGS

Scale Eight Feet to One Inch



LEVELS
 Rail - 367.47
 Platform Kerb - 370.64
 at Buildings 371.05
 Floors - 371.22

Brick Gauge
 Four Courses = 1.14'



NOTE: See Sheet No 8 for Alteration of Doors to Refreshment Room and Rearrangement of Fittings