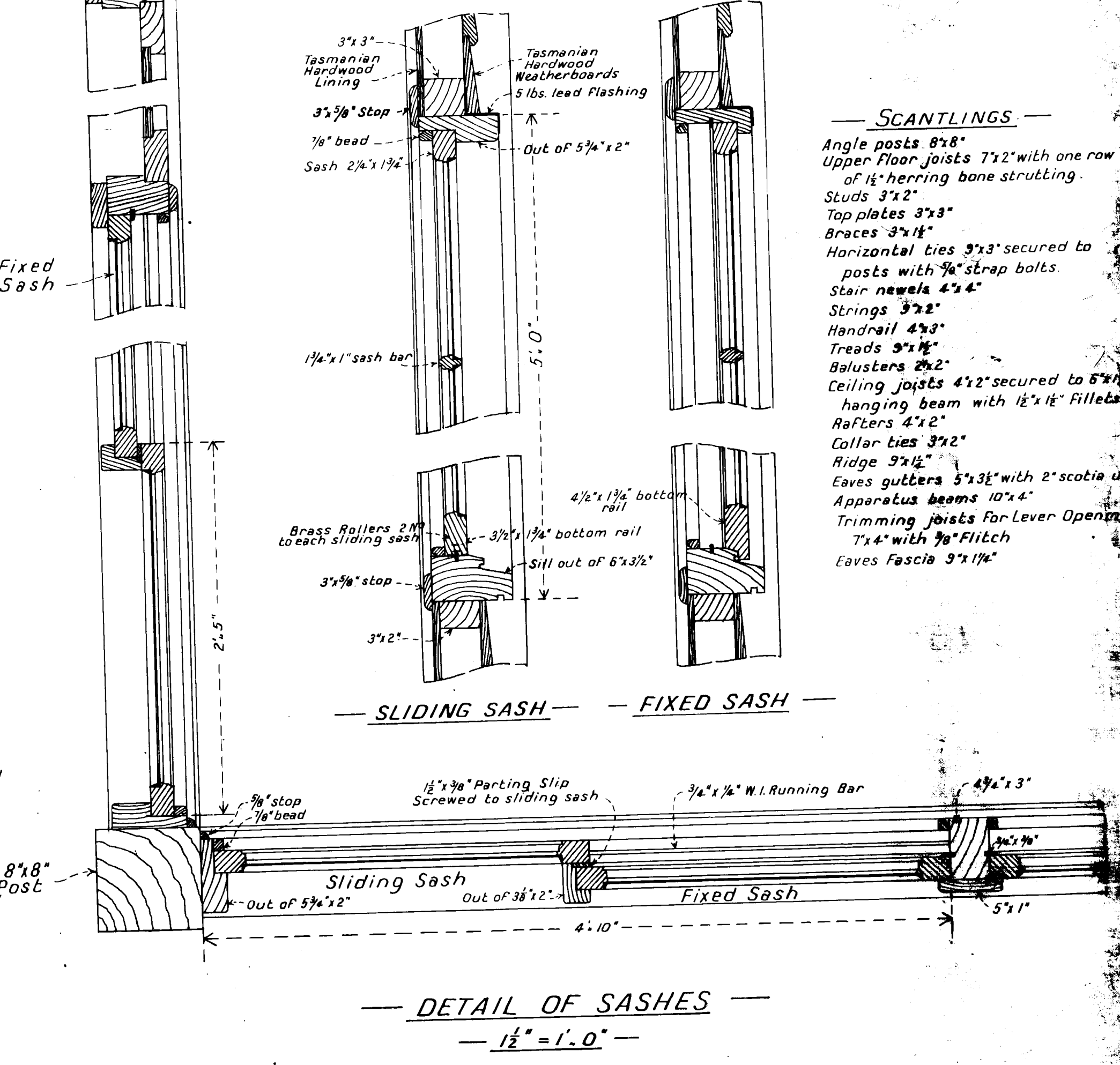
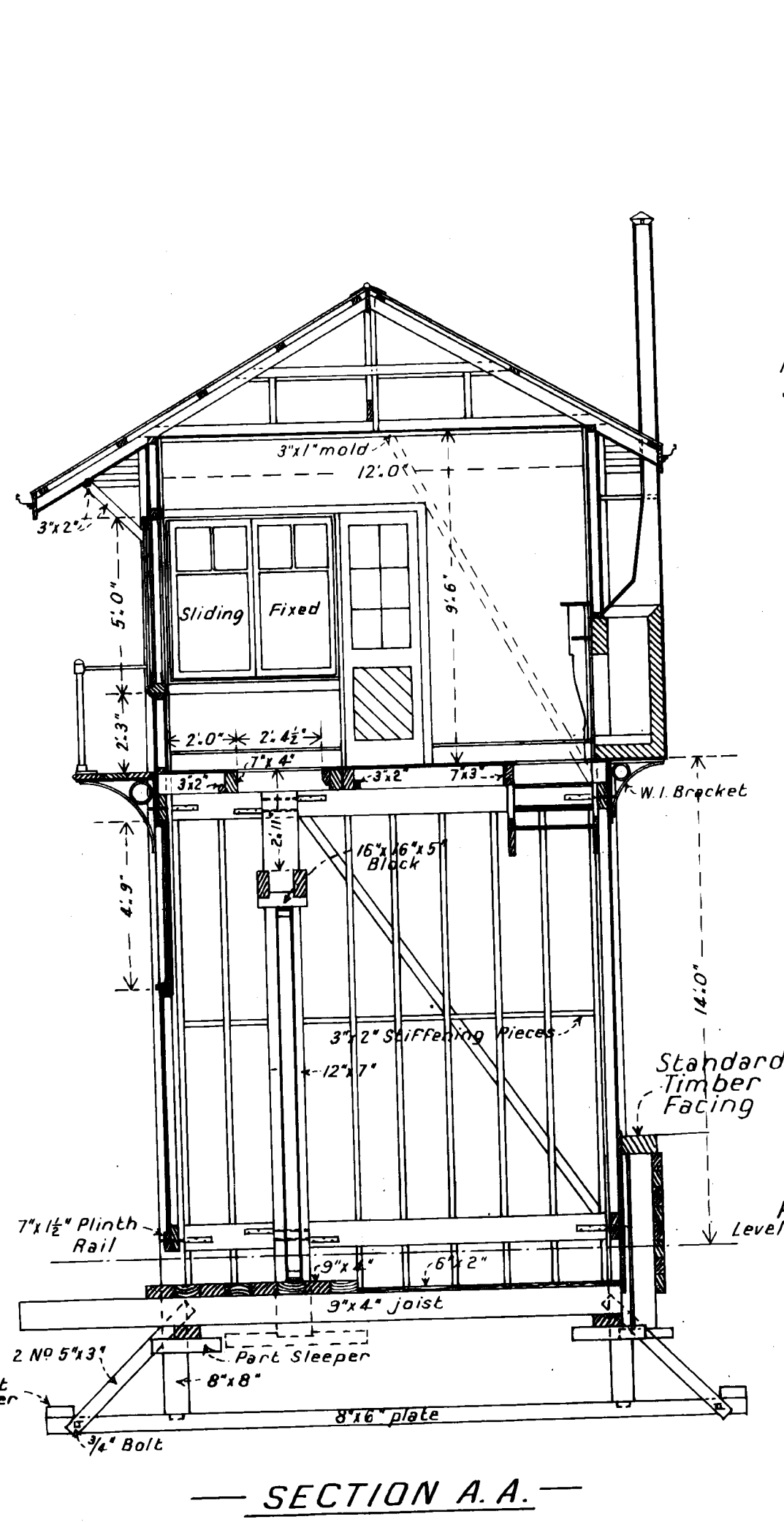
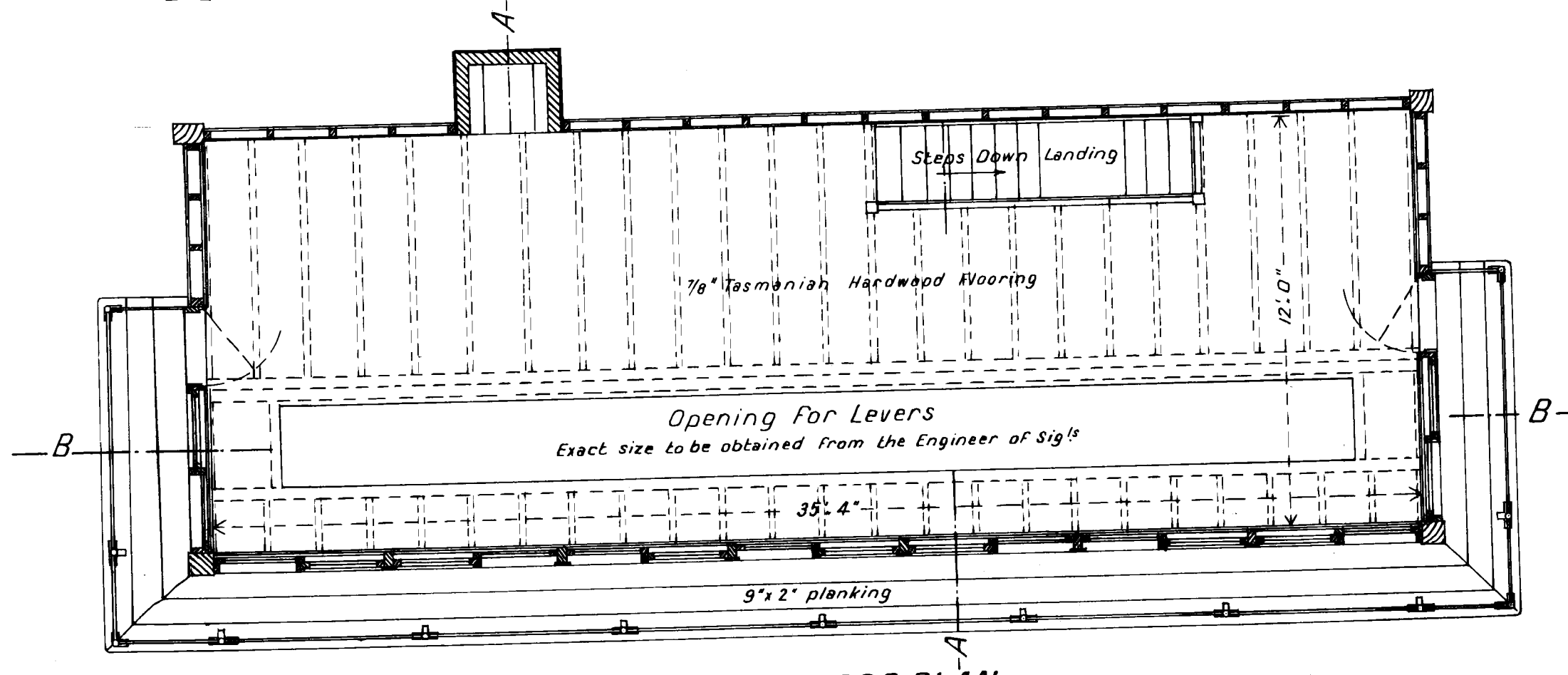
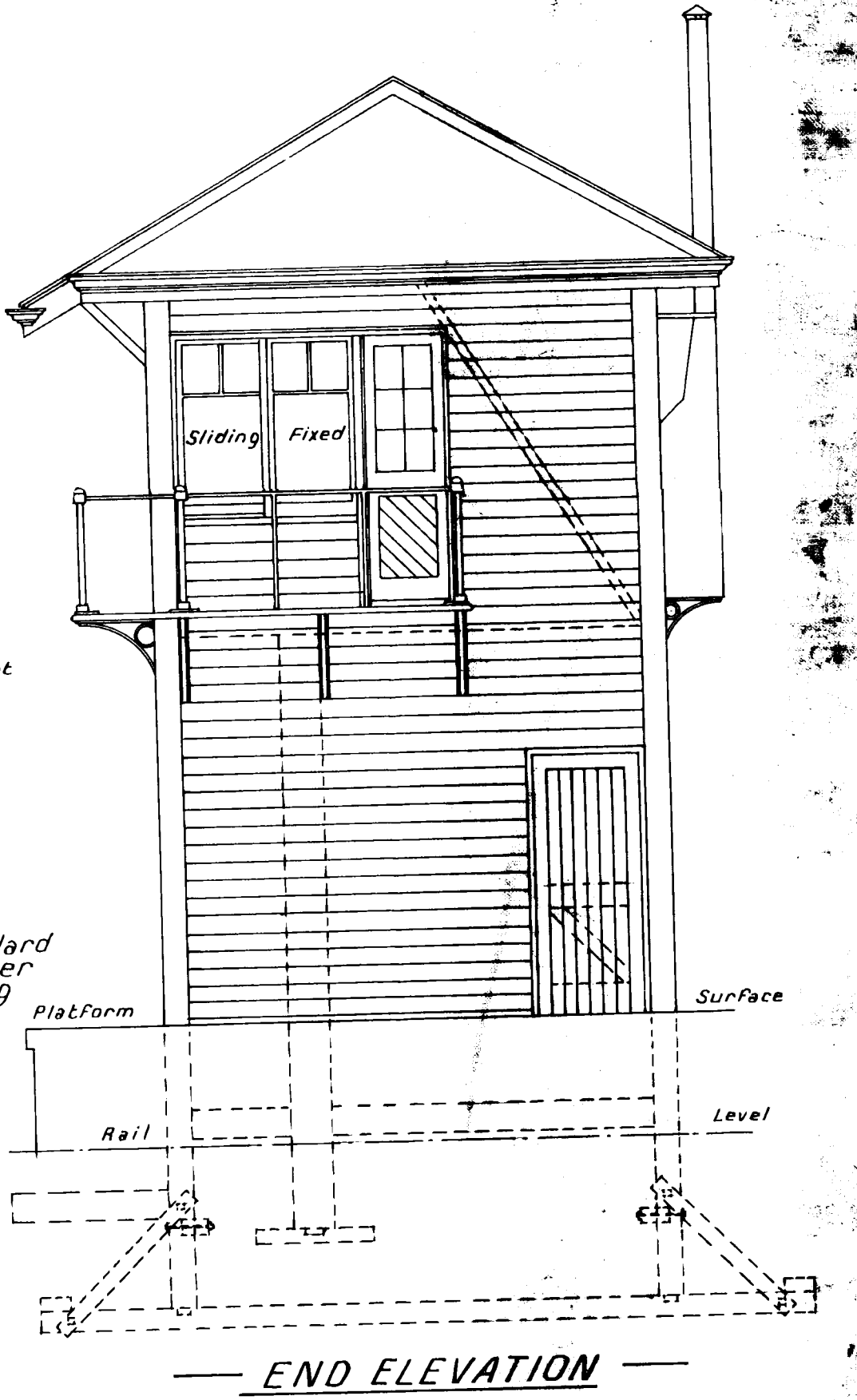
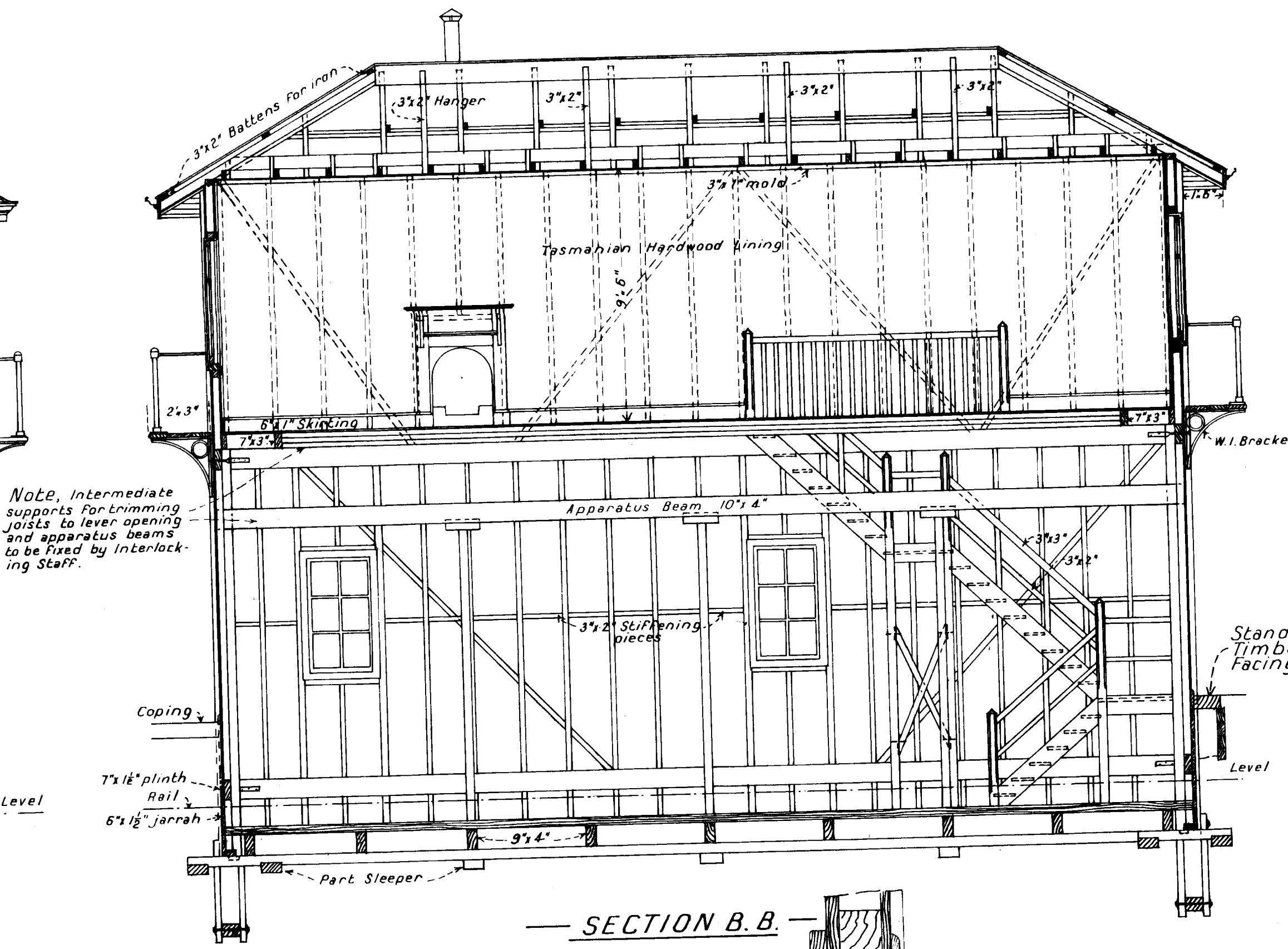
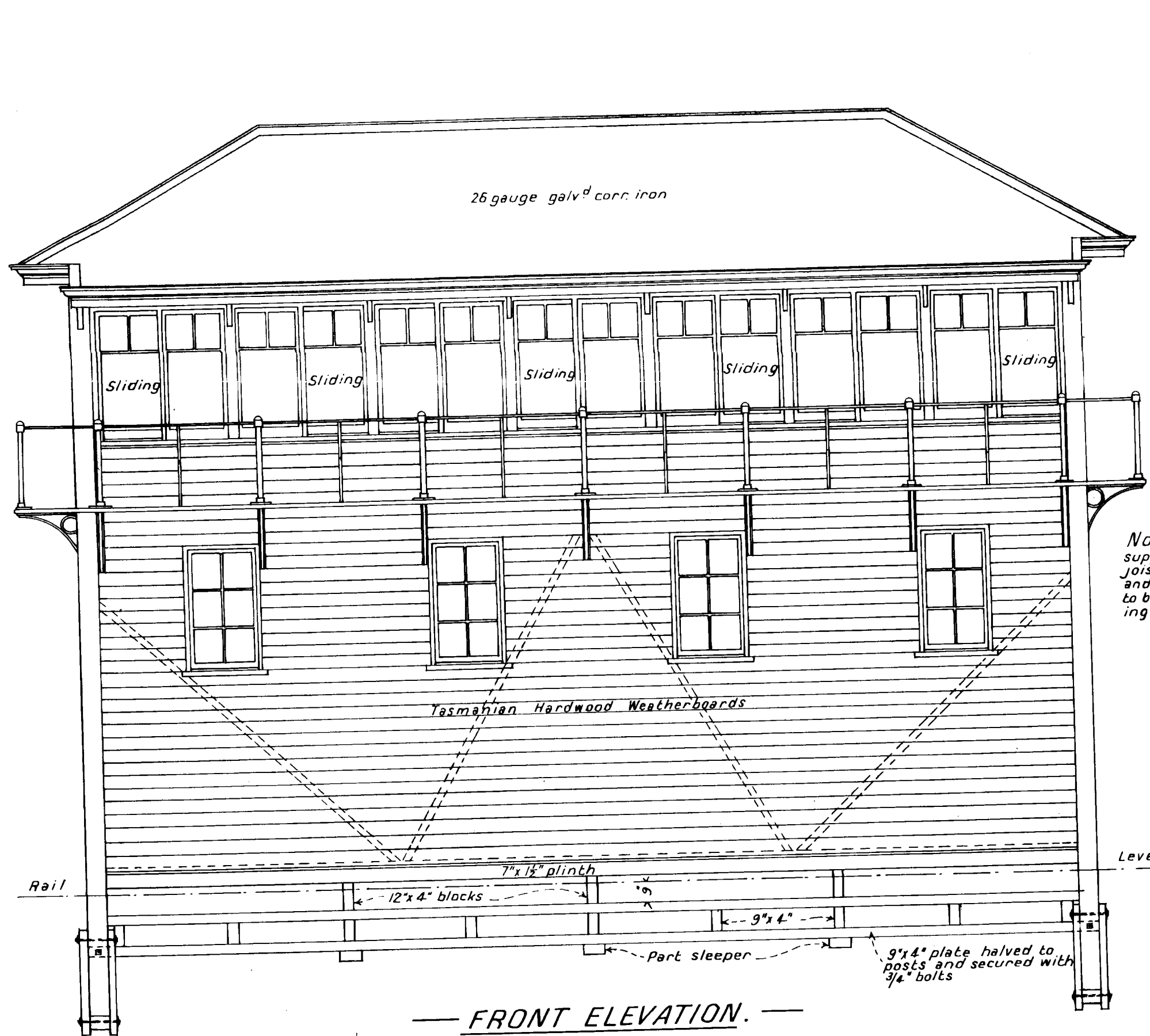
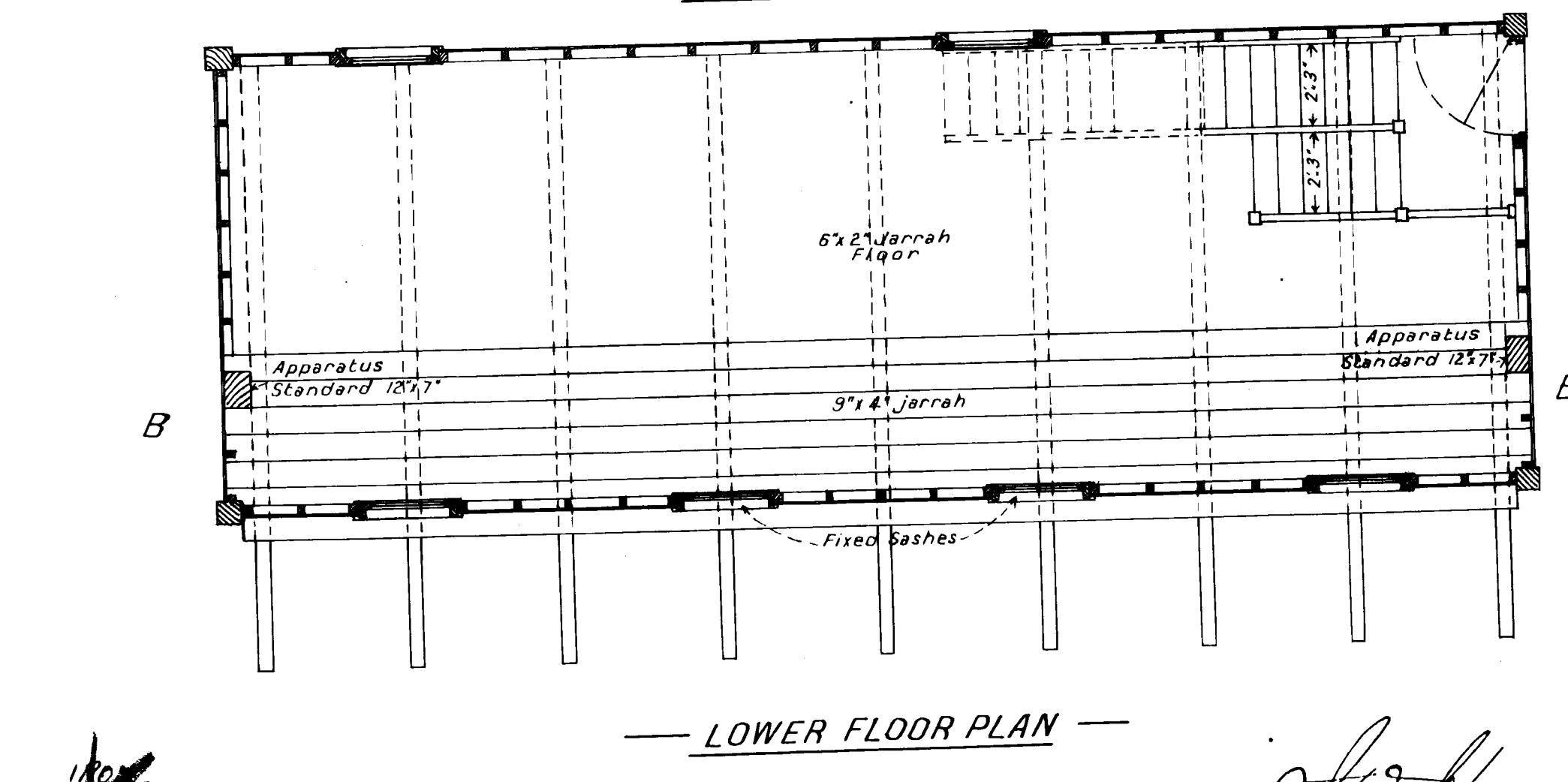


V. R.
HAMILTON STATION
NEW SIGNAL BOX
 Scale 4 Feet to an Inch



- SCANTLINGS —
- Angle posts 8x8"
 - Upper floor joists 7x2" with one row of 15" herring bone strutting.
 - Studs 3x2"
 - Top plates 3x3"
 - Braces 3x1 1/2"
 - Horizontal ties 3x3" secured to posts with 3/4" strap bolts.
 - Stair newels 4x4"
 - Strings 3x2"
 - Handrail 4x3"
 - Treads 3x1 1/2"
 - Balusters 2x2"
 - Ceiling joists 4x2" secured to 6x12" hanging beam with 1 1/2" x 1 1/2" fillets.
 - Rafters 4x2"
 - Collar ties 3x2"
 - Ridge 3x1 1/2"
 - Eaves gutters 5x3 1/2" with 2" scotia under.
 - Apparatus beams 10x4"
 - Trimming joists for lever opening 7x4" with 3/8" fillet.
 - Eaves fascia 3 1/2" x 1 1/4"



Clark
 14.5.12
Trill
 14.5.12