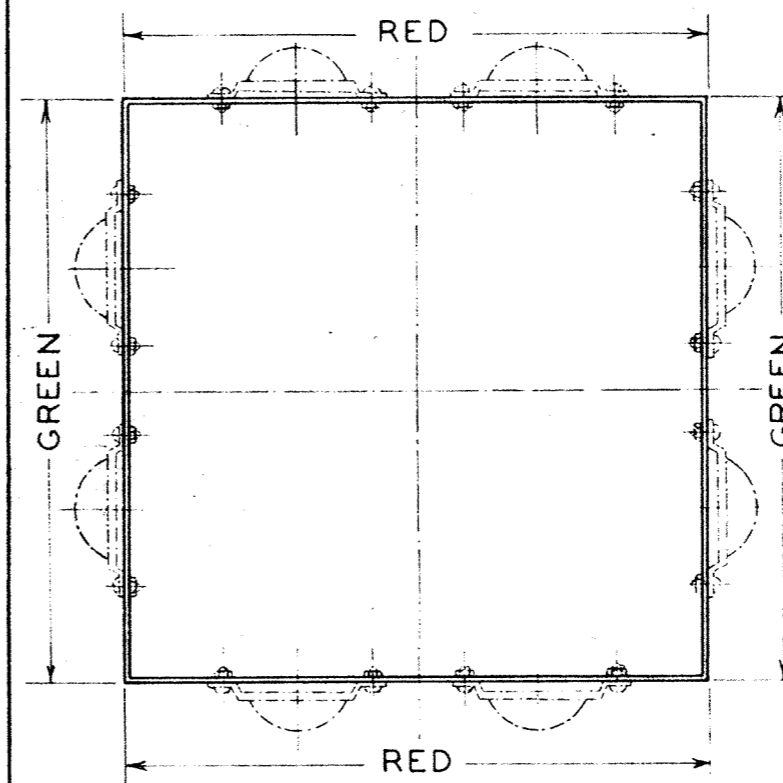
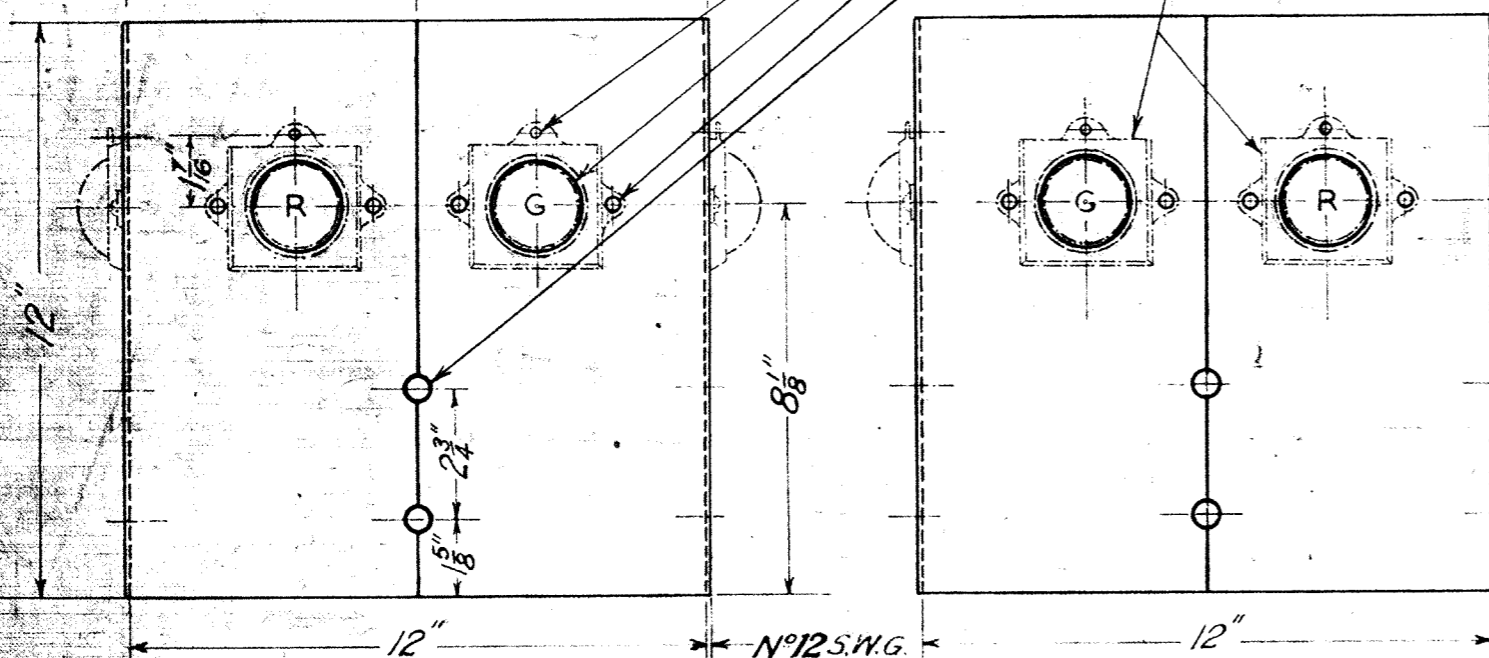


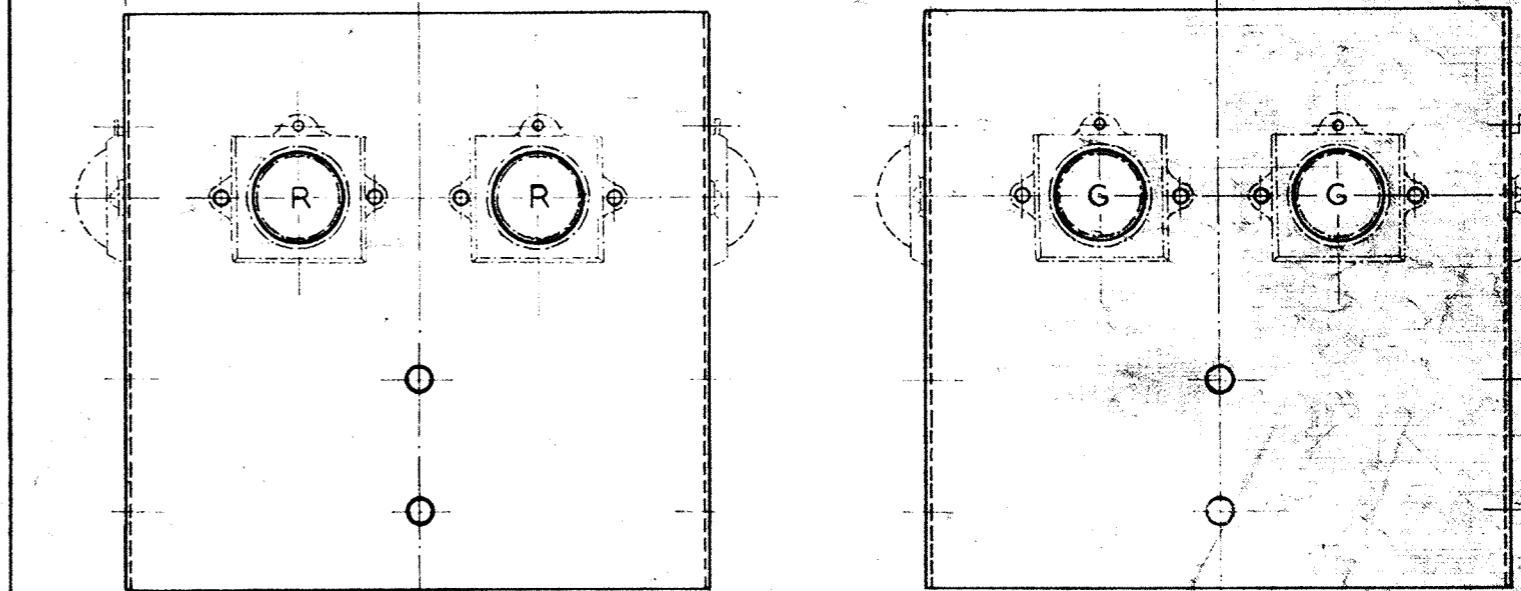
Target to be vitreous enamelled
 Outside - Red & Green as shown
 Inside - Black
 Colours:- To B.S. 381c. of 1948
 Signal Red N°537.
 Brilliant Green N°221.

TARGET COMPLETE
 SUPPLIED WITH

- 8- $\frac{3}{16}$ " dia holes
- 8- $\frac{1}{8}$ " " "
- 16- $\frac{1}{4}$ " " "
- 8- $\frac{1}{2}$ " " "
- 4- Green Glasses $2\frac{1}{4}$ " x $2\frac{1}{4}$ "
- 4- Red Glasses $2\frac{1}{4}$ " x $2\frac{1}{4}$ "
- 8- 4A359
- 8- $\frac{5}{32}$ " Colter Pin
- 16- $\frac{3}{16}$ " Stove Bolts $\frac{1}{2}$ " long with lead washer



Target to be vitreous enamelled
 Outside - Red & Green as shown
 Inside - Black.
 Colours:- To B.S. 381c of 1948
 Signal Red N°537.
 Brilliant Green N°221.



For other particulars & dimensions see 1A508

19-5-67 AH.1301
 8-4-33 AH/274
 19-12-30

12SWG ENAMELLING STEEL
 TARGET

WITHOUT FITTINGS 2A508
 COMPLETE 1A508

19-5-67 AH.1301
 8-4-33 AH/274
 19-12-30

12SWG ENAMELLING STEEL
 TARGET

WITHOUT FITTINGS 4A508
 COMPLETE 3A508

3906
 NEW SERIES
 6/12/37

J-6-1

VICTORIAN RAILWAYS
 TARGET
 FOR
 POINT INDICATOR

CHIEF ENG. SIGS.&TELS.	DRAWN FROM SAMPLE	TRACED BY R.G.C.
<i>[Signature]</i>	<i>[Signature]</i>	<i>[Signature]</i>

A508

19-12-30