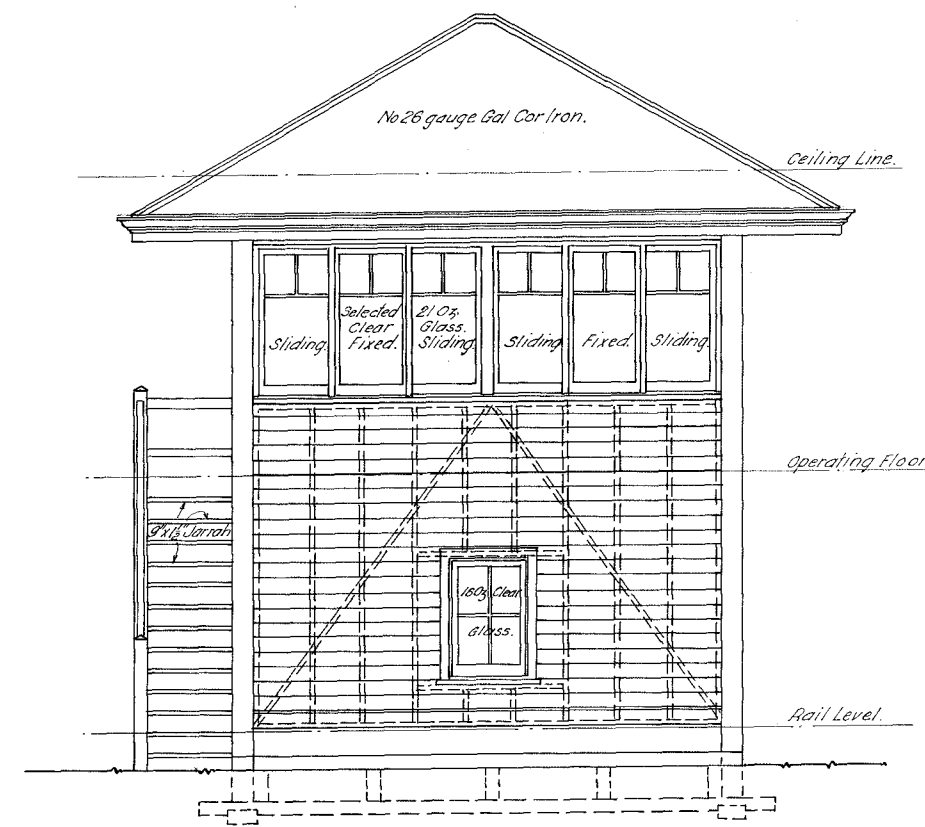


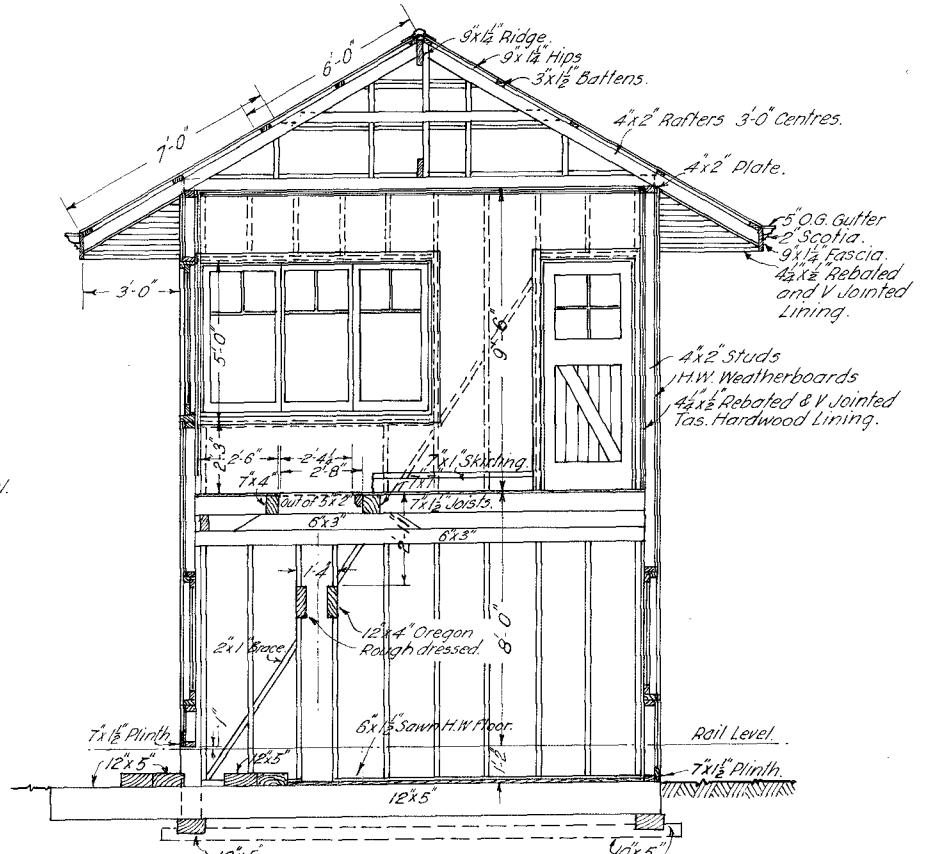
— V.R. —
 — FLEMINGTON RACECOURSE AND SHOWGROUNDS LINE —
 — EPSOM ROAD —
 — NEW SIGNAL BOX —

— Scales —
 1/4" = 1'-0"
 1/8" = 1'-0"

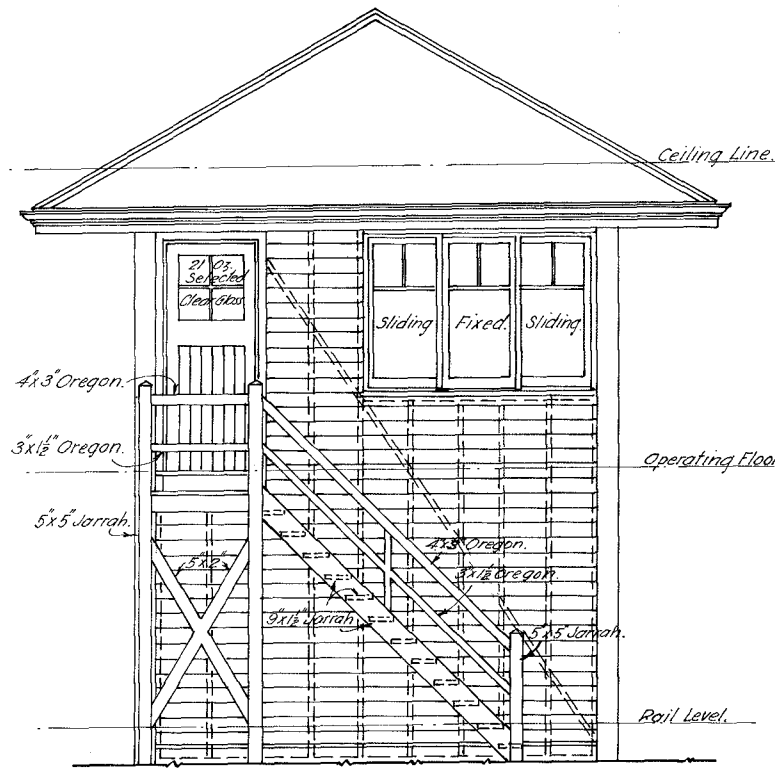
W.V. 14.10.24
 5618/24.



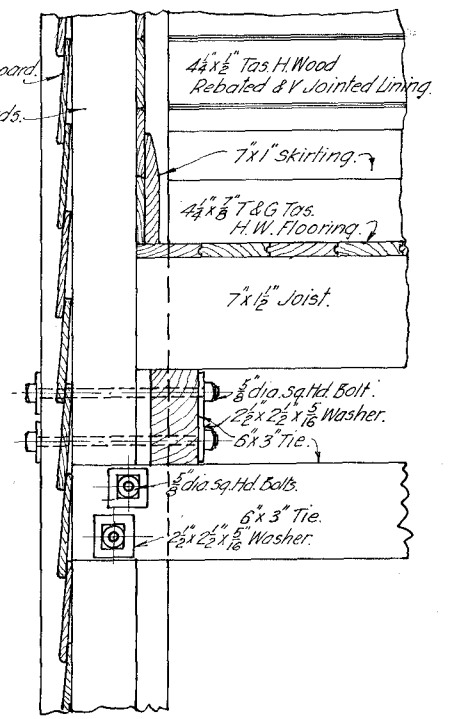
— FRONT ELEVATION —



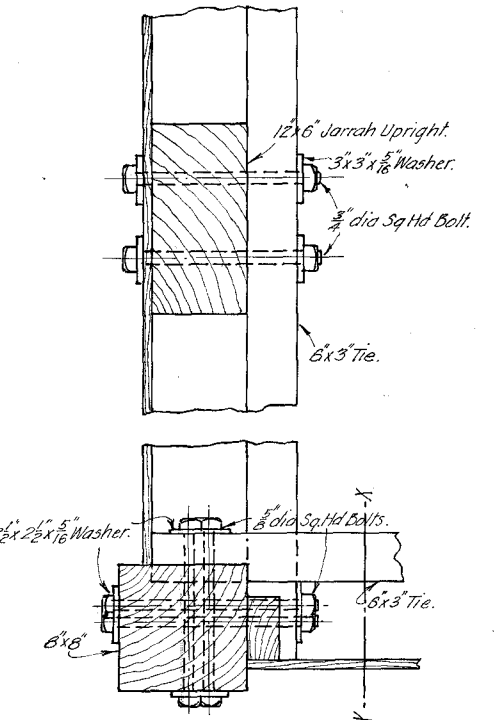
— SECTION A.A. —



— END ELEVATION —



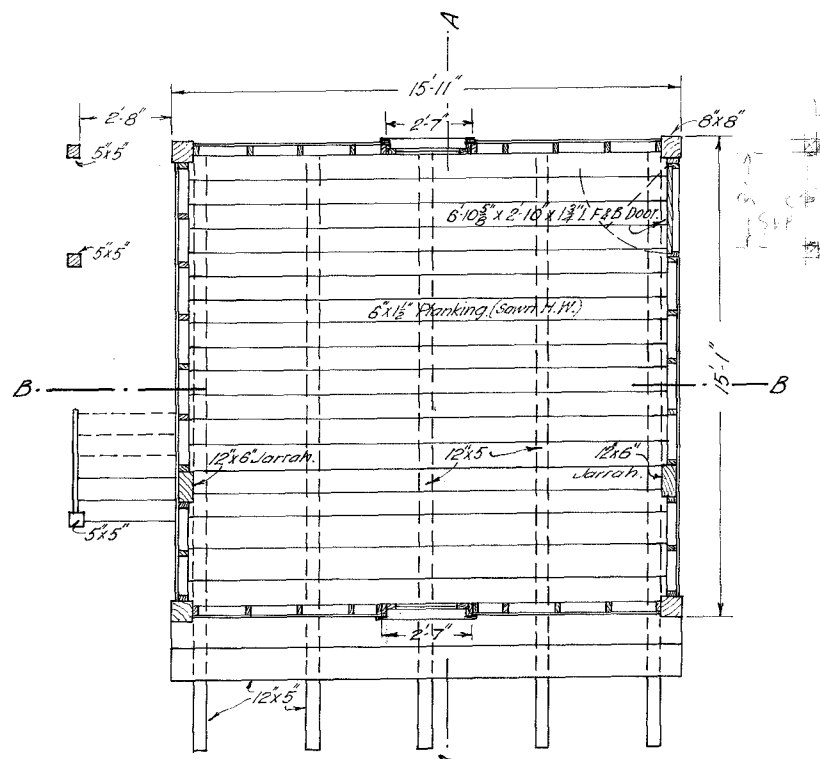
— SECTION X.X. —



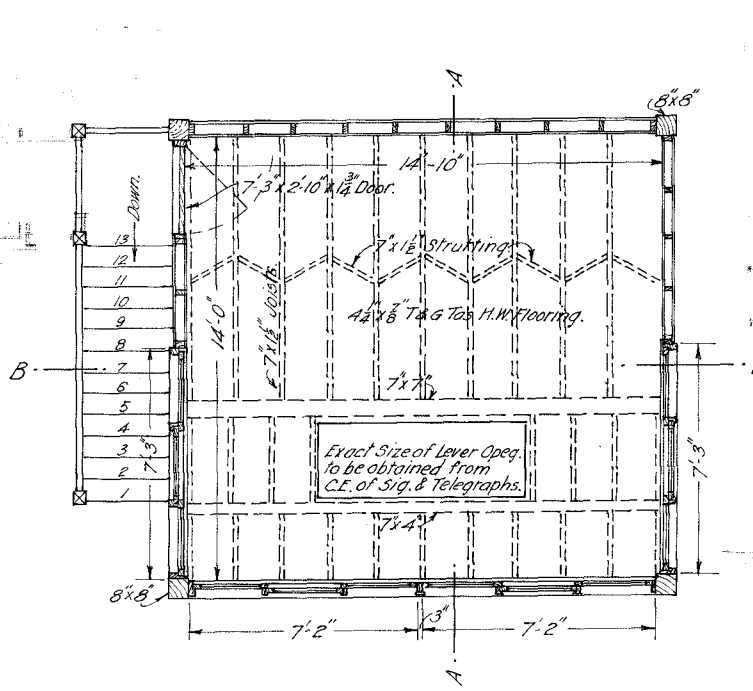
— PLAN —

— DETAIL OF HORIZONTAL TIES —

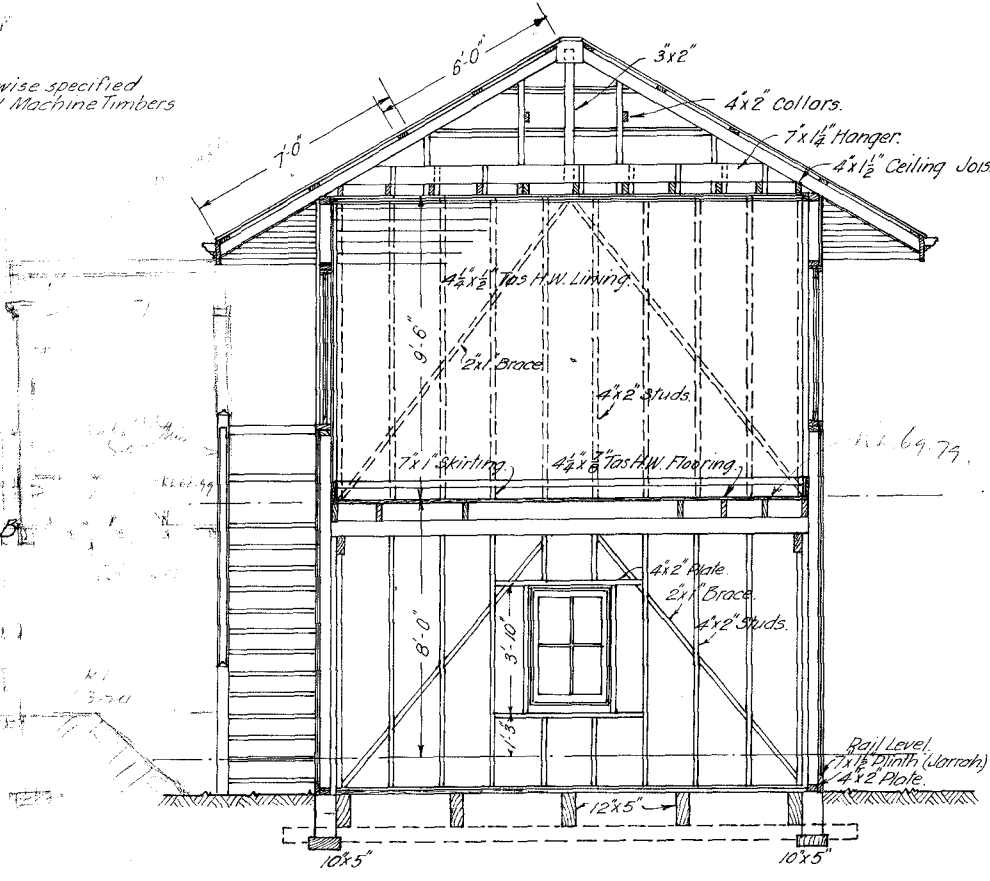
NOTE: All Timbers above ground to be of Hardwood unless otherwise specified. Timbers below ground to be of Red Gum or Jarrah. All Machine Timbers and Trimmers to Lever Opening to be of Oregon.



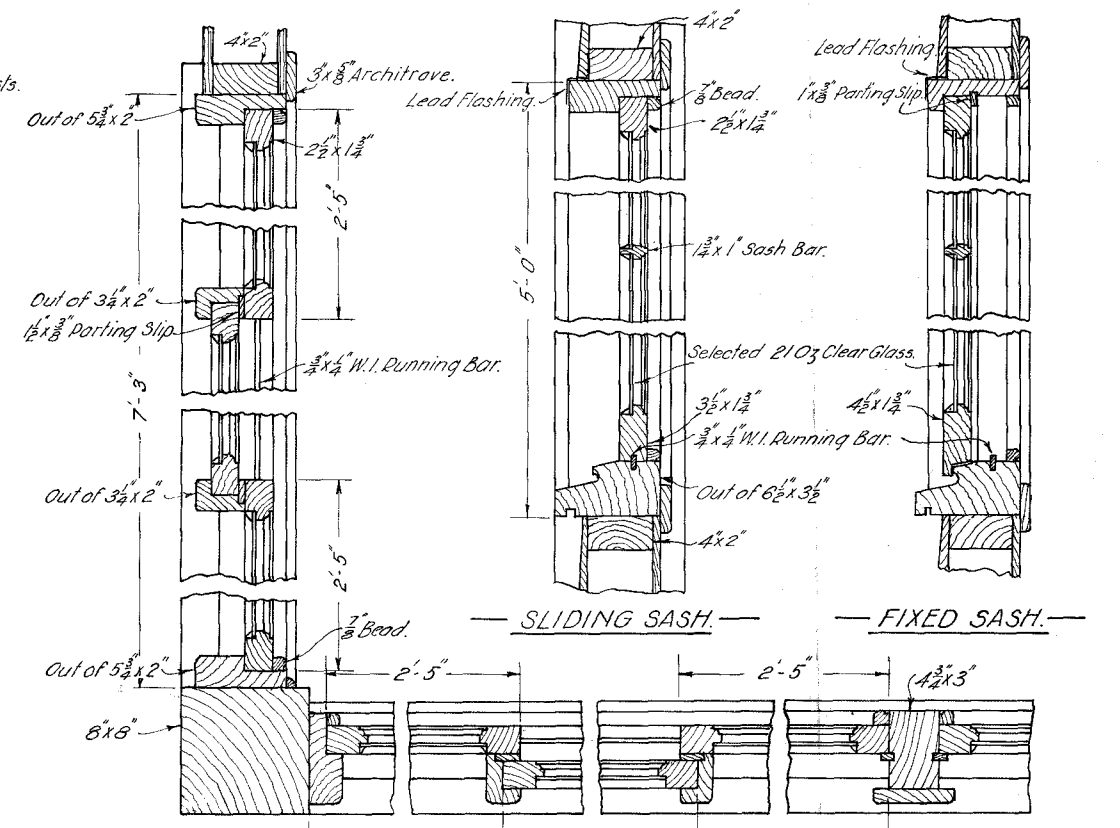
— BASEMENT PLAN —



— OPERATING FLOOR PLAN —



— SECTION B.B. —



— SLIDING SASH —
 — FIXED SASH —
 — PLAN —
 — DETAIL OF SASHES —

f. m. a.
 Acting Chief Engineer of Way and Works.
 C.E.S.

Chief Eng. of Sigs. & Tels.
 17.10.24

Chief Architect.
 23.10.24.

B.67.
 A.64.

3949.24

2/14/74
 4 9 39
 K. B. I.