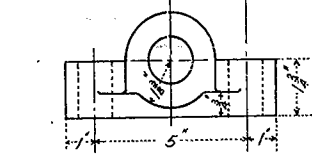
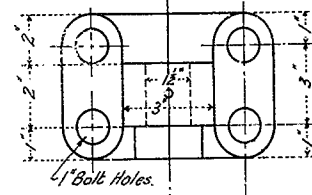
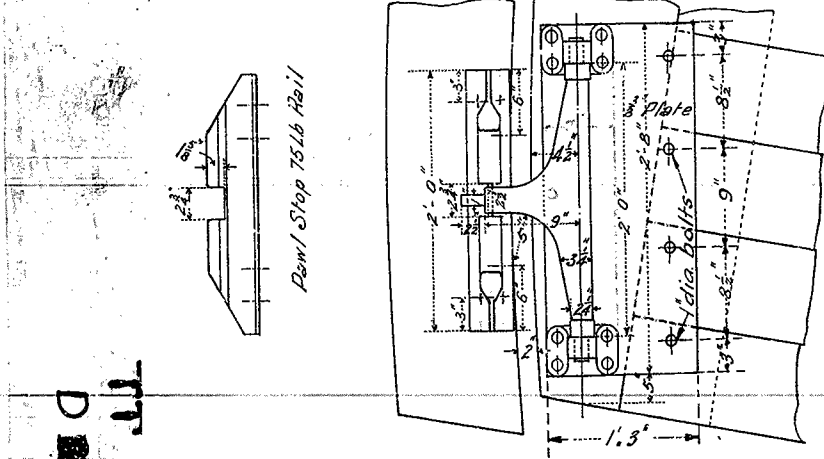
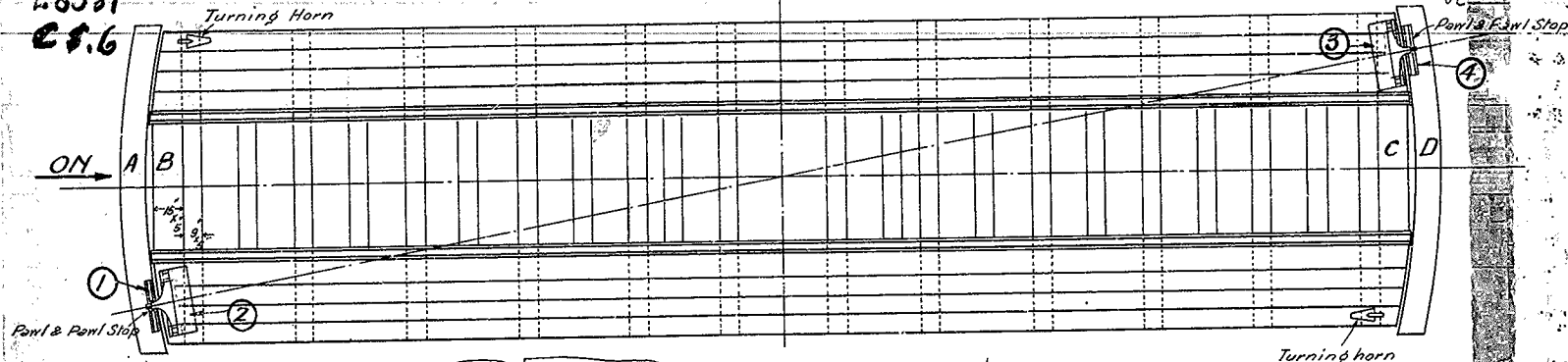


28581
C.S.6

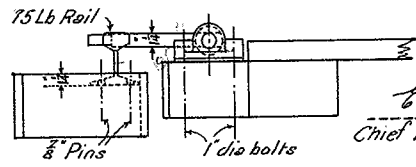
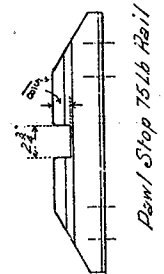
R. 28581 583
3WP JC



—Pawl Bearings—
—Cast Steel—

**INSTRUCTIONS FOR FIXING
PAWL & PAWL STOPS TO 50 & 53
TURN TABLES.**

1. Load B end of turntable till the outrigger wheels bear on circular track rail, and set the turntable rails at B in proper alignment with track rails at abutment A.
2. Securely fix the Pawl Stop (1) and Pawl (2) at A B end of the turntable in the position indicated on the drawing.
3. Turn the loaded end B of the turntable round to abutment D till the turntable rails are in proper alignment with track rails at A. In this position fix Pawl Stop (4) to suit Pawl (3) and fix Pawl (3) to suit Pawl Stop (1).



C. H. Ballard per
Chief Engineer of Way and Works.
18-3-27
W. S. Ergt

—V.R.—
53 ft Turntables

—Throw-Over Pawls & Pawl Stops—
—Scales 3'-1'-0" 1'-1'-0" & 3'-1'-0"
1550-17
5862-24
2591-26

TT - 46
D - 18