

# VICTORIAN RAILWAYS

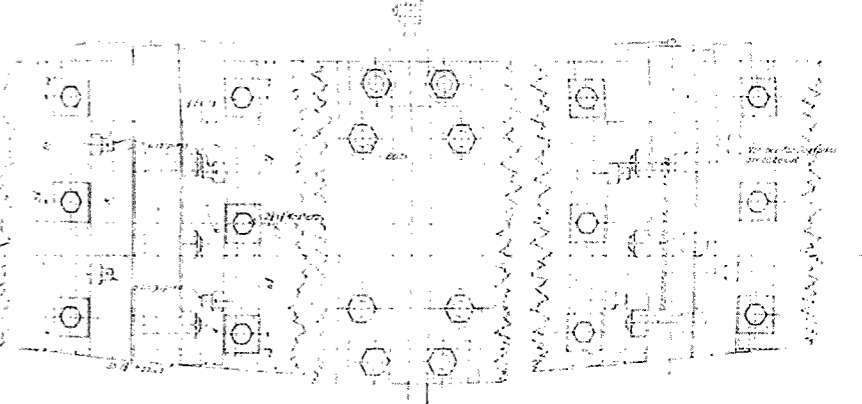
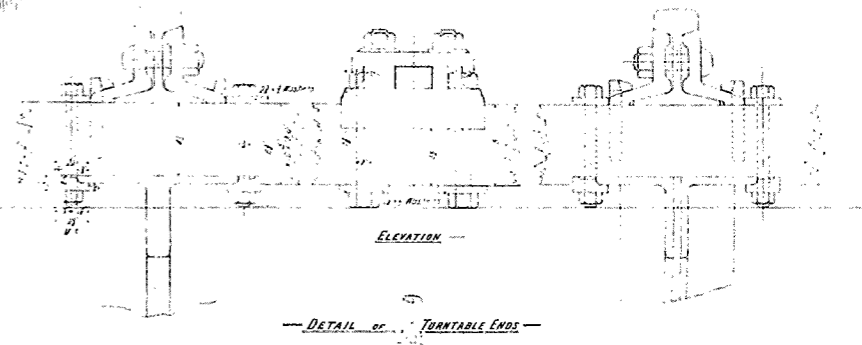
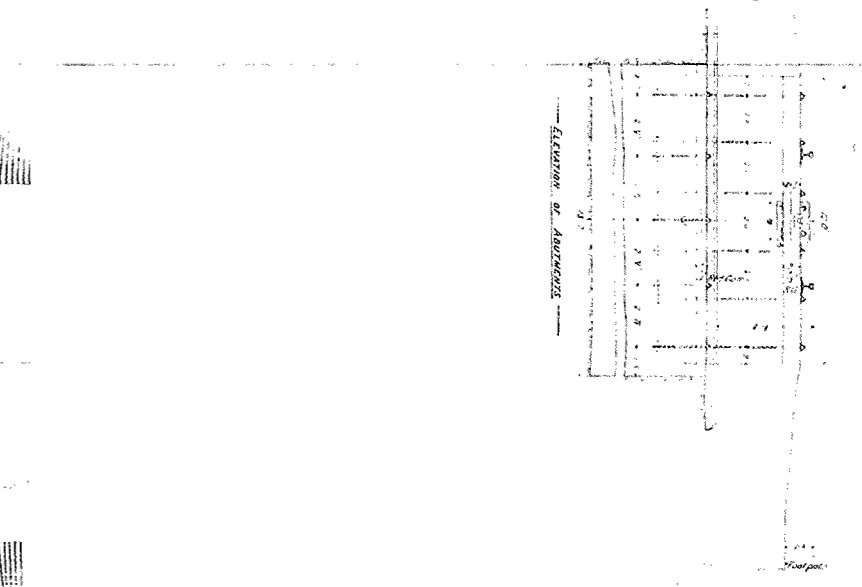
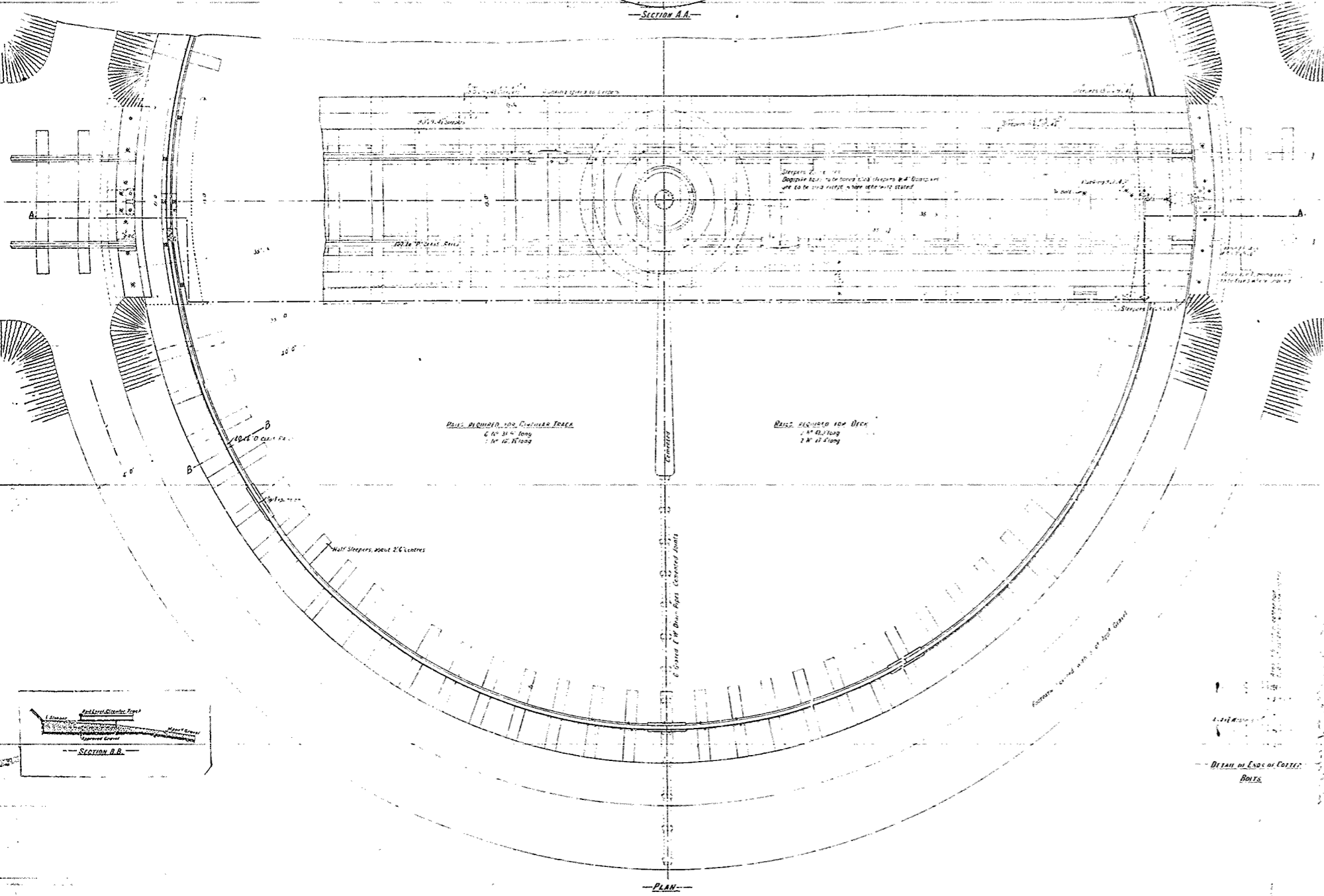
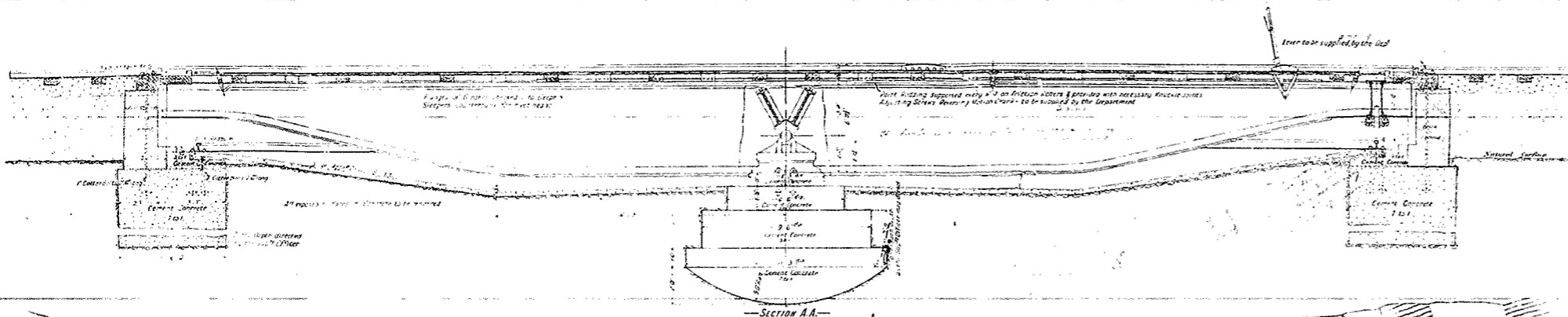
## — 70' TURNTABLE —

To be erected at

### GENERAL ARRANGEMENT — FOUNDATIONS ETC.

— Scales: 1/4" = 1'-0" —

CONTRACT No 15295  
No 1



See Scales. Ligno 20/100 4-7-92  
A-17

For later info of this arrangement showing  
and rails see Ligno. June 27-85  
A-17

TO FJ TURNTABLE. Over the Top  
Genl Arrangement.  
Foundations, Pkws. etc.  
TT — 18  
A-17