

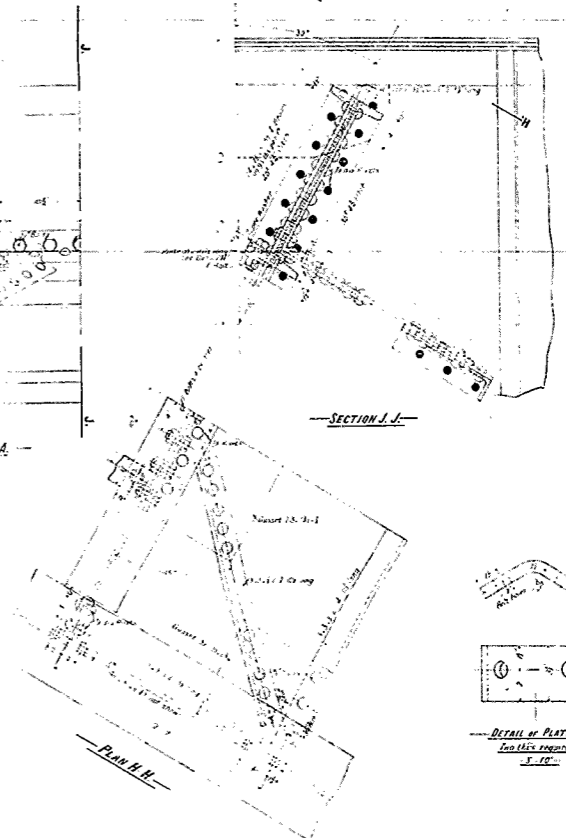
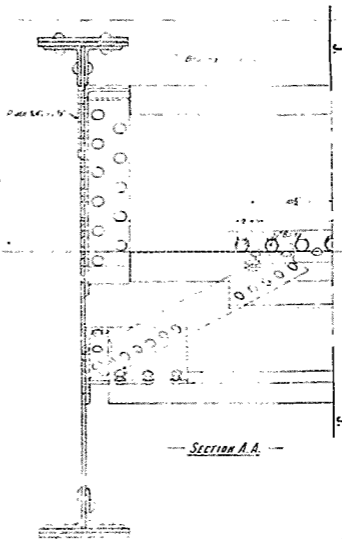
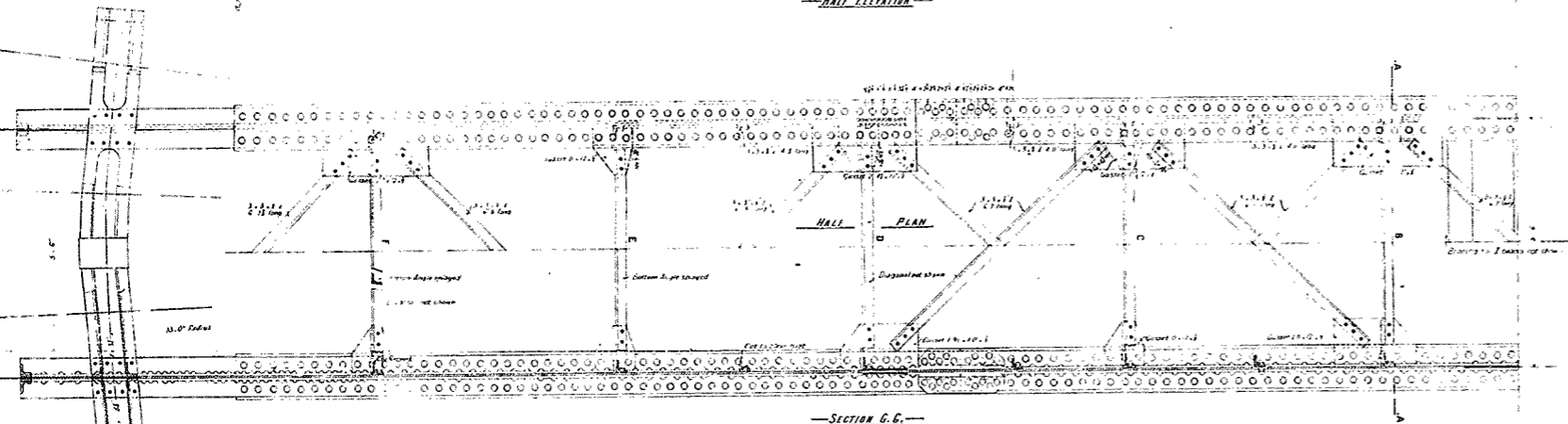
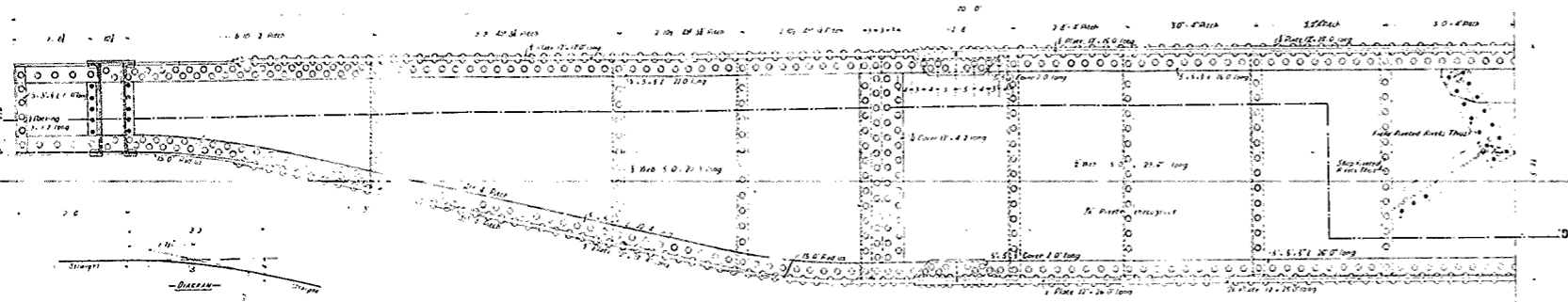
# VICTORIAN RAILWAYS

## —70 FT TURNTABLE—

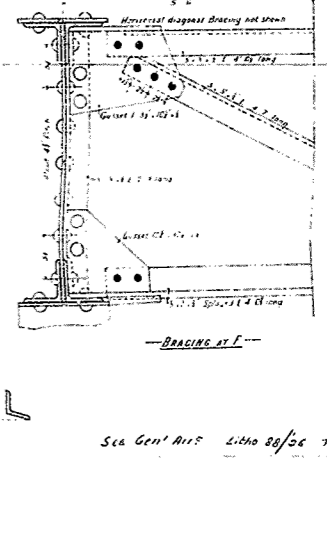
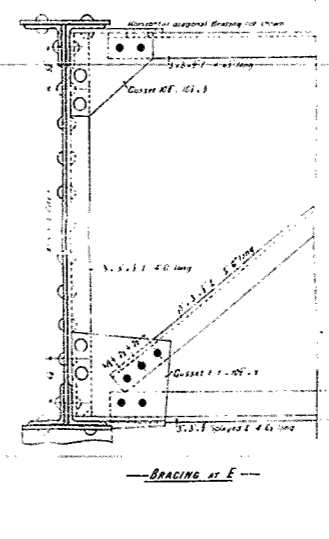
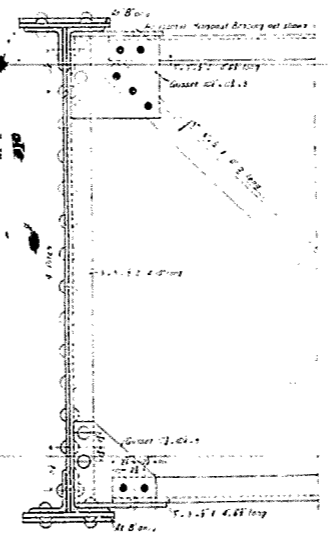
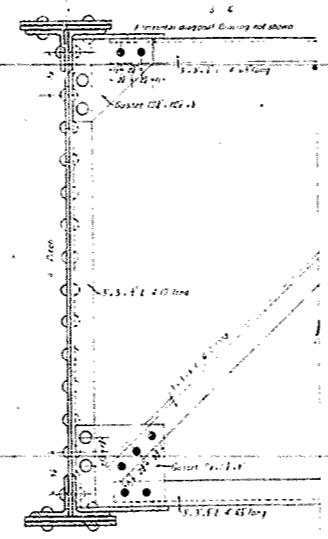
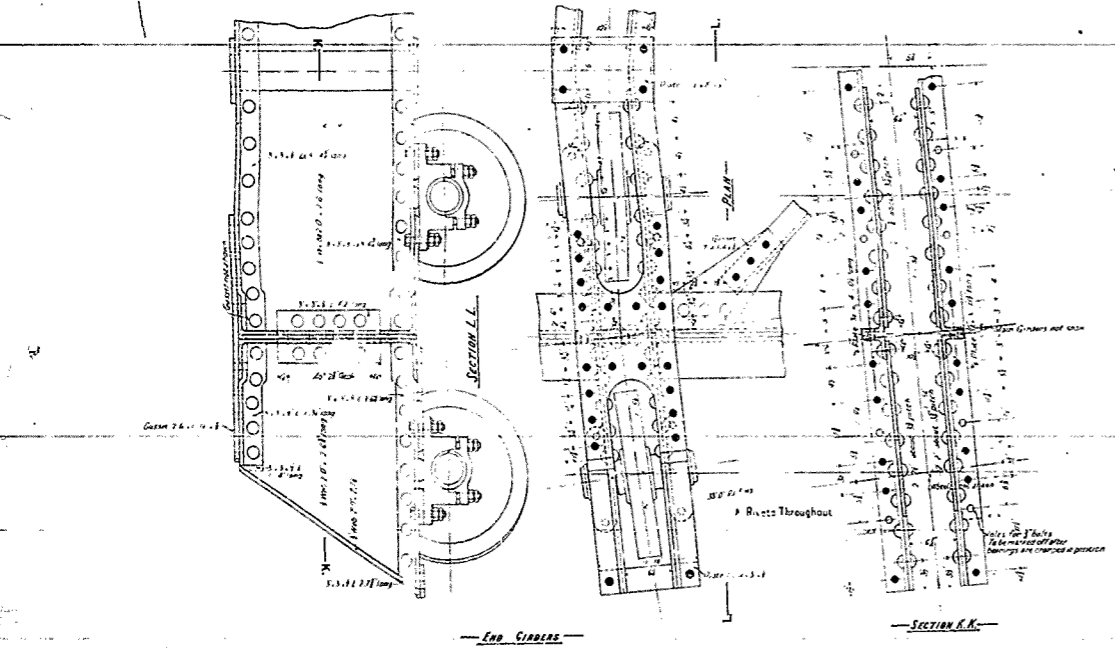
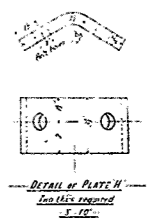
### DETAILS OF GIRDERS

—Scales 1/4" and 1/8" = 1'-0"—

CONTRACT N° 15295  
N° 2



Note:  
All Rivets to be of the  
of Patent Material.



See Genl. Arr. Lino 80/26 75-18  
A-17