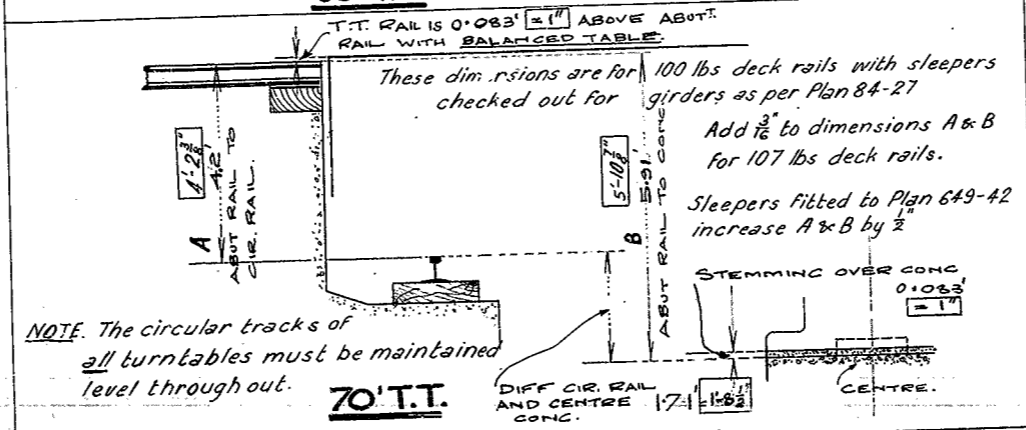


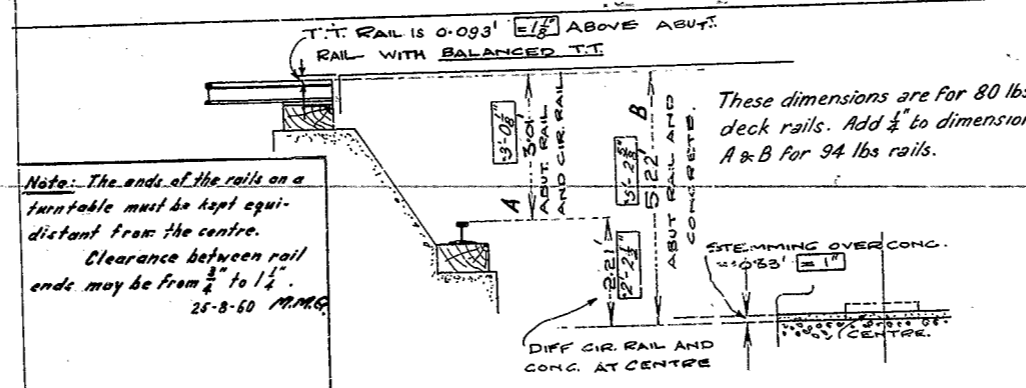
REC'D
C-1-62
DATE
NO. 1174

85' T.T.



NOTE: The circular tracks of all turntables must be maintained level throughout.

70' T.T.



Note: The ends of the rails on a turntable must be kept equidistant from the centre. Clearance between rail ends may be from 3/4" to 1 1/4". 25-8-60 M.M.G.

53' T.T.

Note: The equivalents in feet and inches are shown in enclosure thus:

Outrigger Wheel Clearances.

50 Ft. T.T.	2"
53 Ft. T.T.	1 3/4"
70 Ft. T.T. turning other than S, R & X Engines	1 1/2"
70 Ft. T.T. turning S & X Engines	1 3/4"
70 Ft. T.T. turning R Engines	2"
Older type girders may require more than 2"	

V.R. LOCOMOTIVE TURNTABLES.
Levels between abutments and centres of 85', 70' and 53' Turntables

Scale 3/8" = 1'-0" Amended 9-1-51 DATE 15-35 J.J.C.

Chief Eng. of Way + Works
Drawing Check Correct
V.R. Eng.

Plan No. 146-30