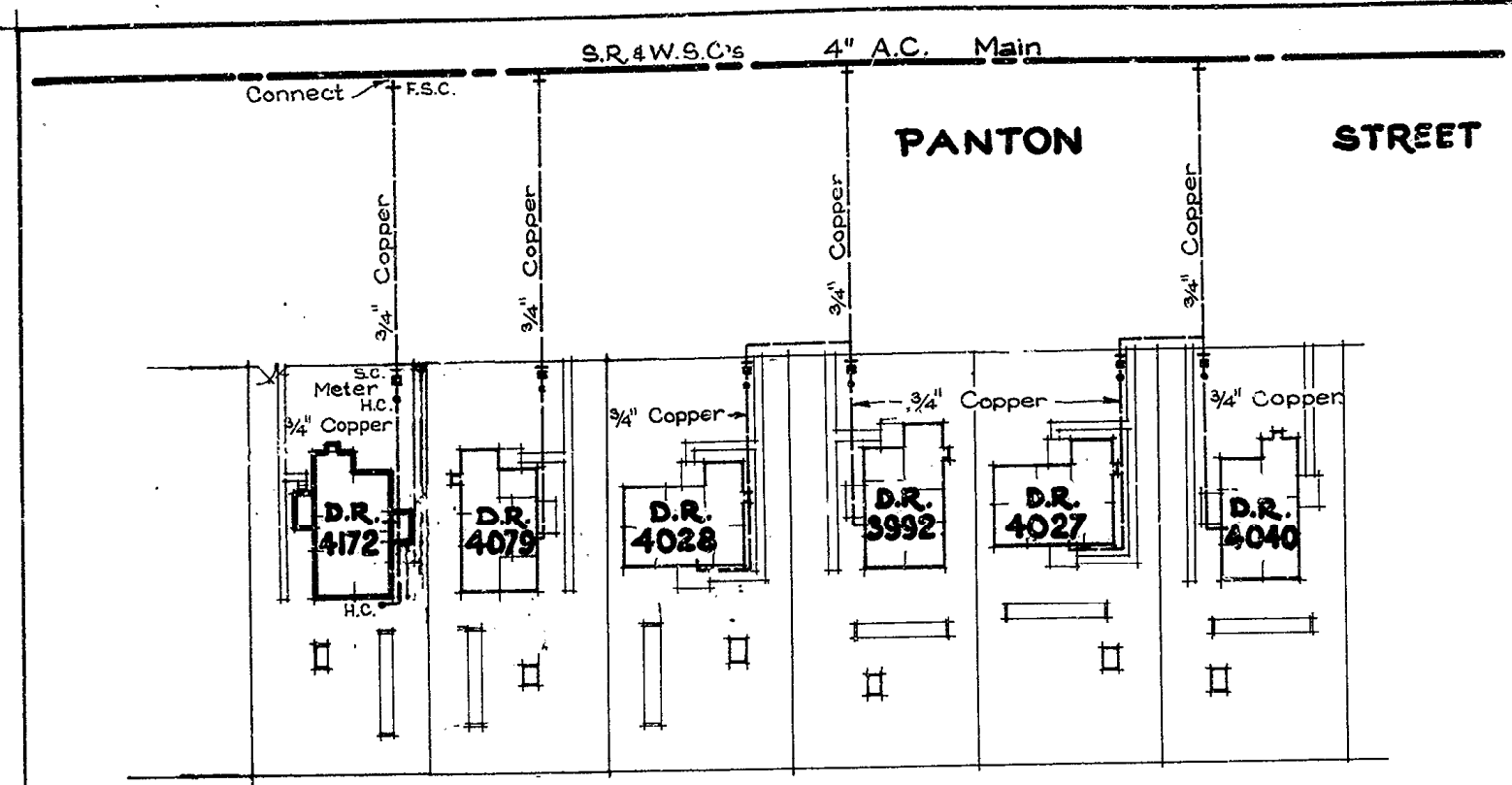


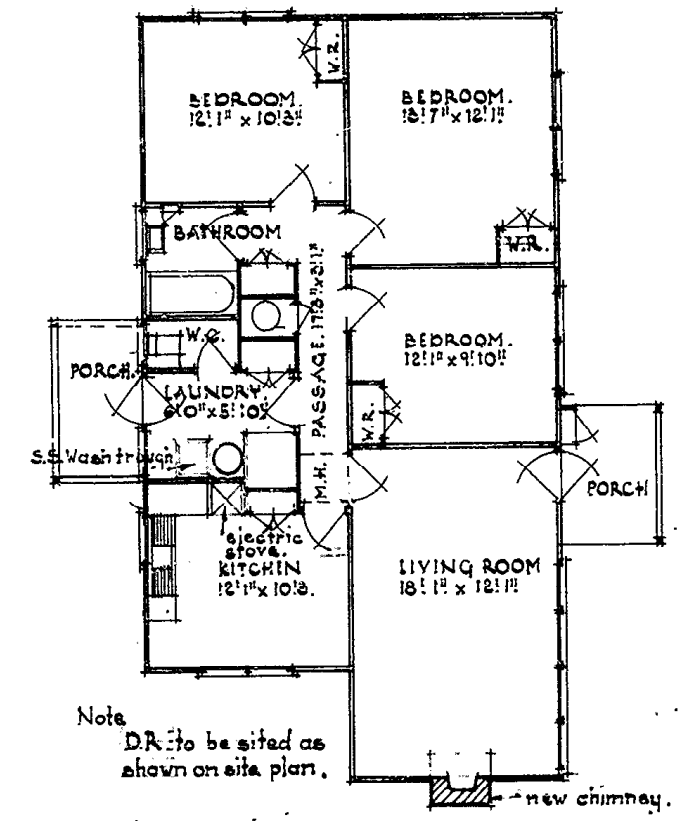
14 WP AJS.  
Monday 4:00pm



**S I T E P L A N**  
scale 1" = 40' 0"

Note:  
Water reticulation to be connected to internal pipework of house at point provided.

Existing pipework & fittings indicated in blue colour.  
Proposed pipework & fittings indicated in red colour.



Note:  
D.R. to be sited as shown on site plan.

**PLAN OF D.R. TYPE 3B/1RA.**  
scale 1/8" = 1' 0"

Reproduced from S.A. plan, No 991/67.

**GOLDEN SQUARE**  
**WATER SUPPLY TO DR. 4172**  
**IN PANTON ST.**

Chief Civil Engineer, 21.12.67

revision	date	amendment	amend. drawn by	traced	checked	corrected	W.S. 200-3 D-6	Plan No 4-68

RECORD  
R561410  
L.29-3