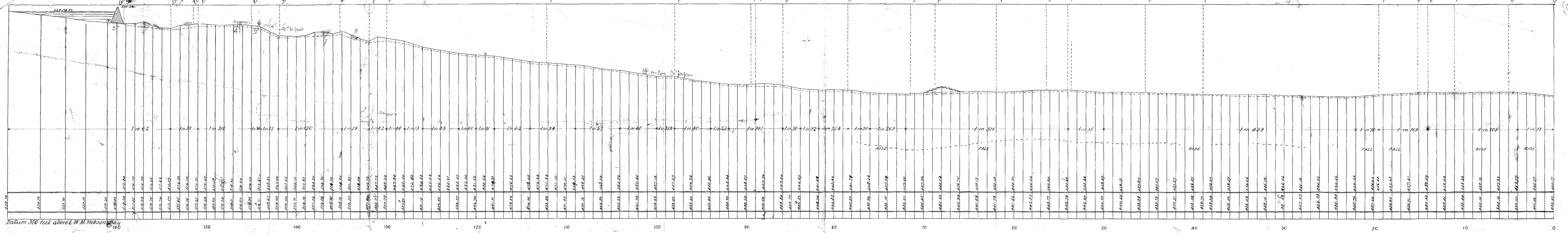


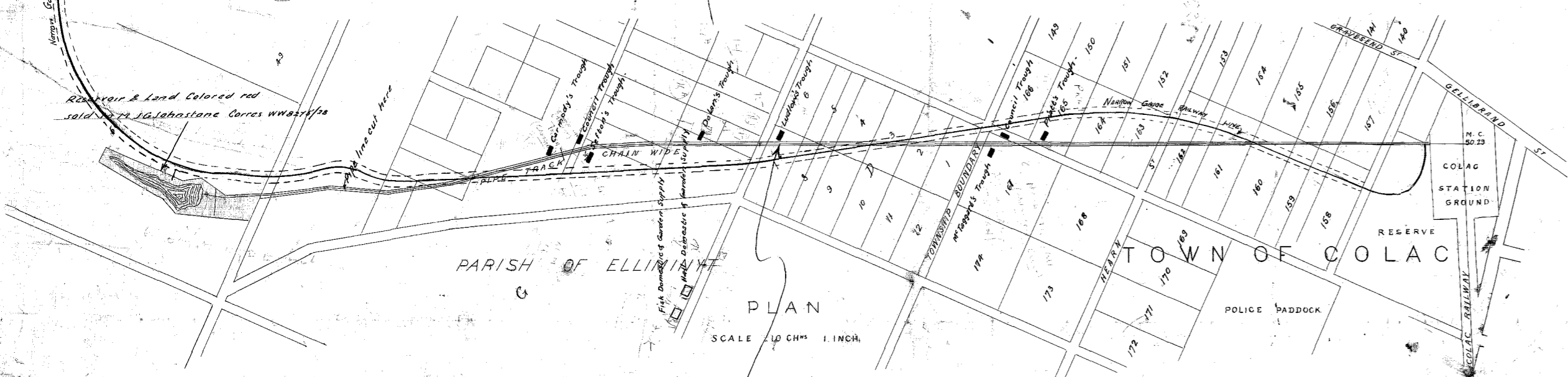
# VICTORIAN RAILWAYS

## GEELONG AND COLAC RAILWAY.

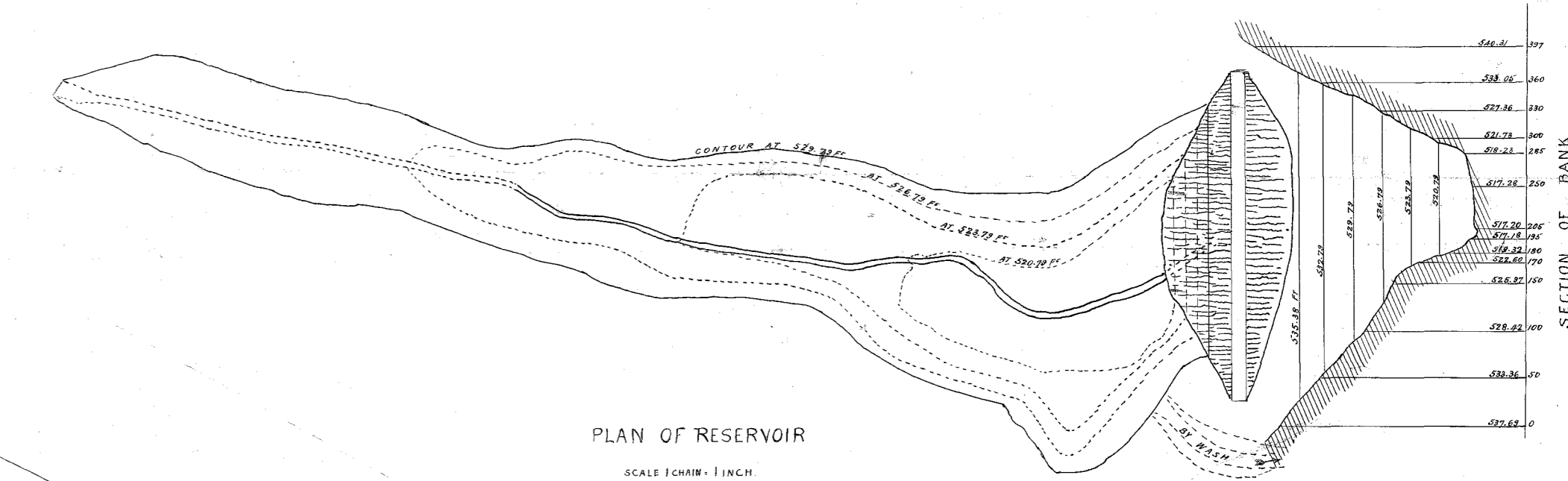
### WATER SUPPLY COLAC



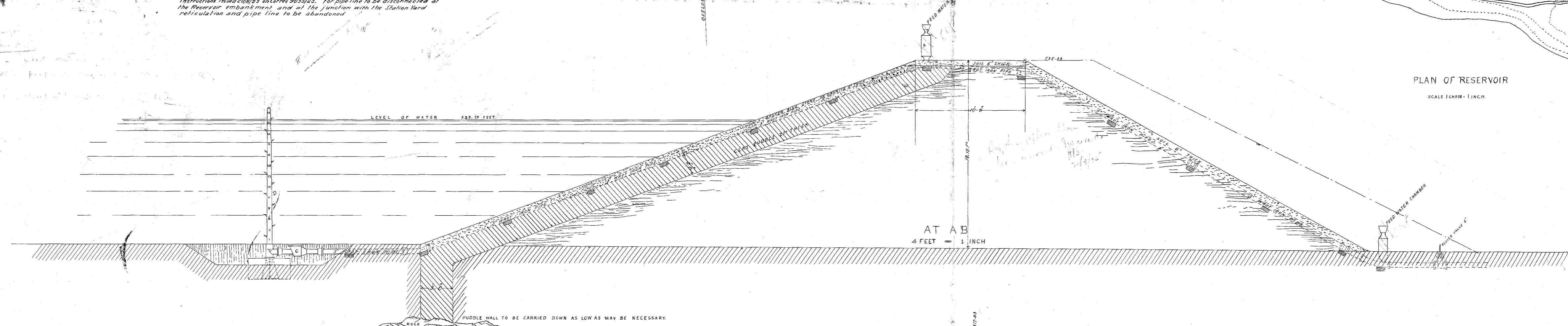
SECTION OF PIPE TRACK  
SCALE: 1/4" = 1' HORIZ. 1" = 10' VERT.



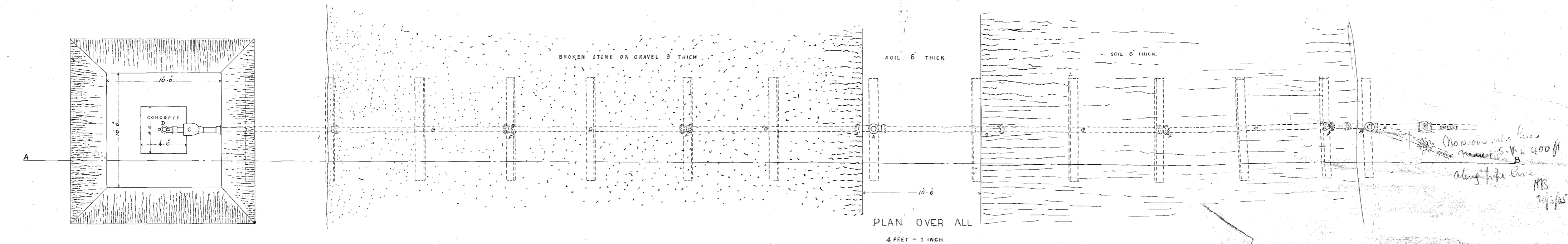
PLAN  
SCALE: 1/4" = 1' HORIZ. 1" = 10' VERT.



PLAN OF RESERVOIR  
SCALE: 1/4" = 1' HORIZ. 1" = 10' VERT.



AT A B  
4 FEET = 1 INCH



PLAN OVER ALL  
4 FEET = 1 INCH

RAILWAY DEPARTMENT, MELBOURNE DEC. 1876

Signed - *H. G. Ford*  
11/11/77

WS - R77 3  
A 9