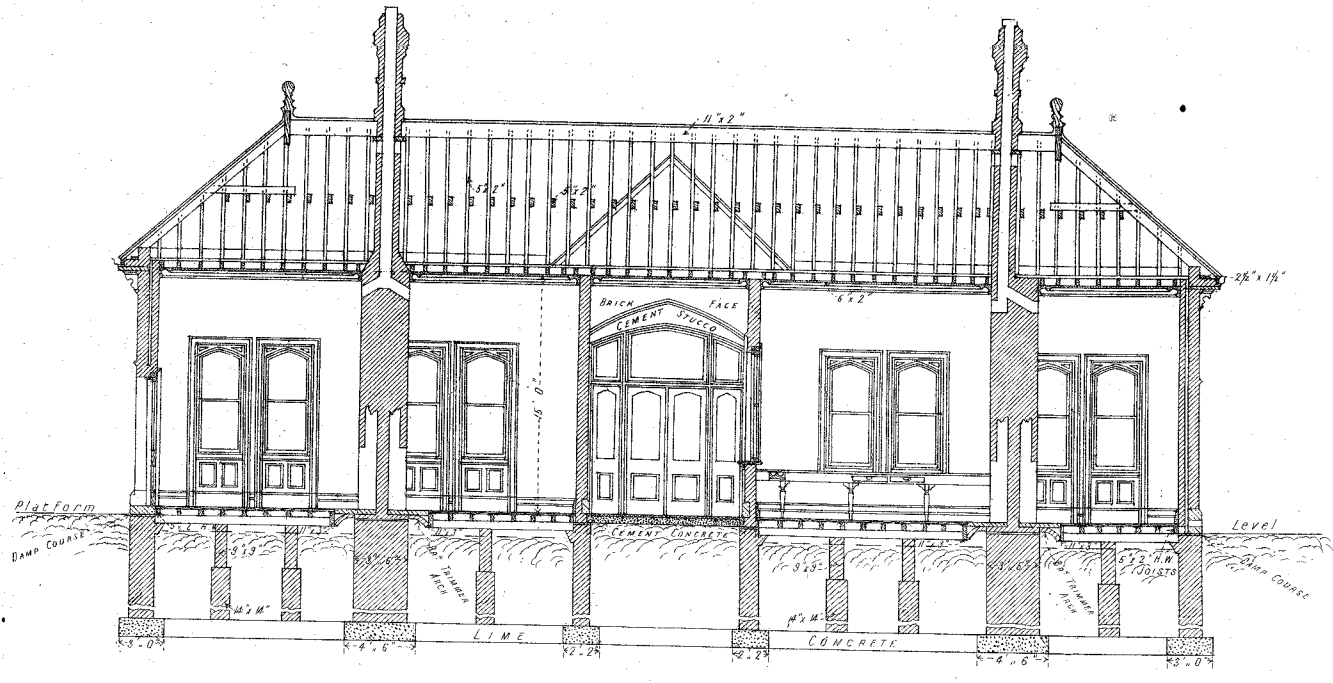


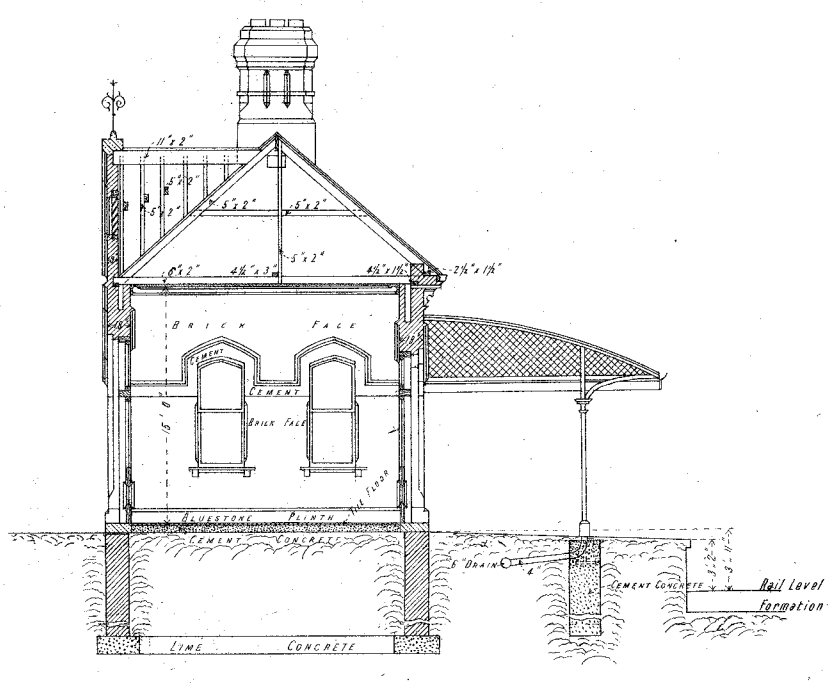
VICTORIAN RAILWAYS,
Melbourne & Coburg Line
 Station Buildings at *Brunswick*

CONTRACT N^o 3422
 N^o 1.

SCALE 8 FEET TO AN INCH



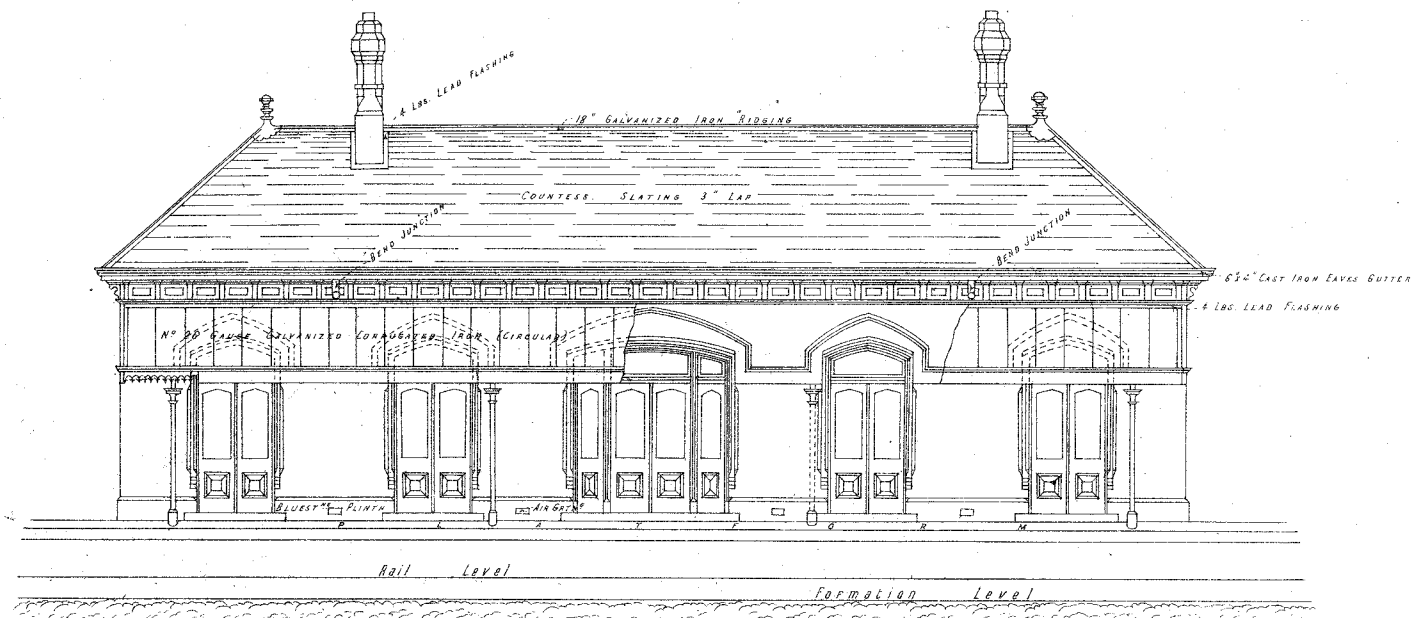
SECTION ON LINE A. B.



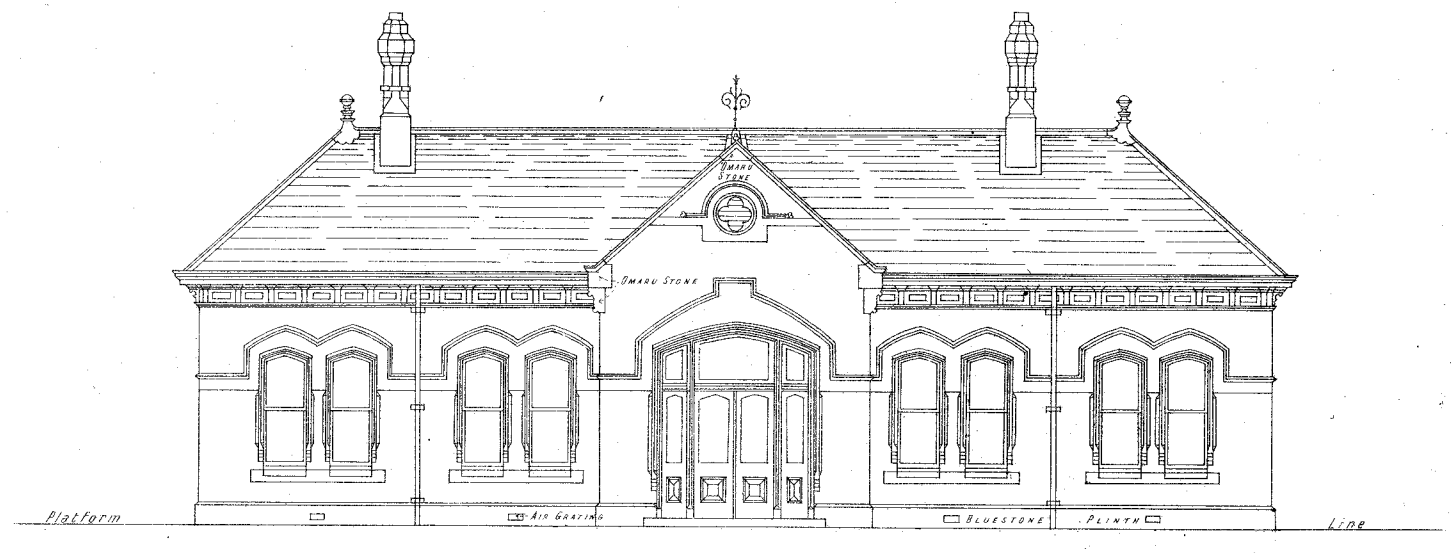
SECTION ON LINE C. D.



END ELEVATION

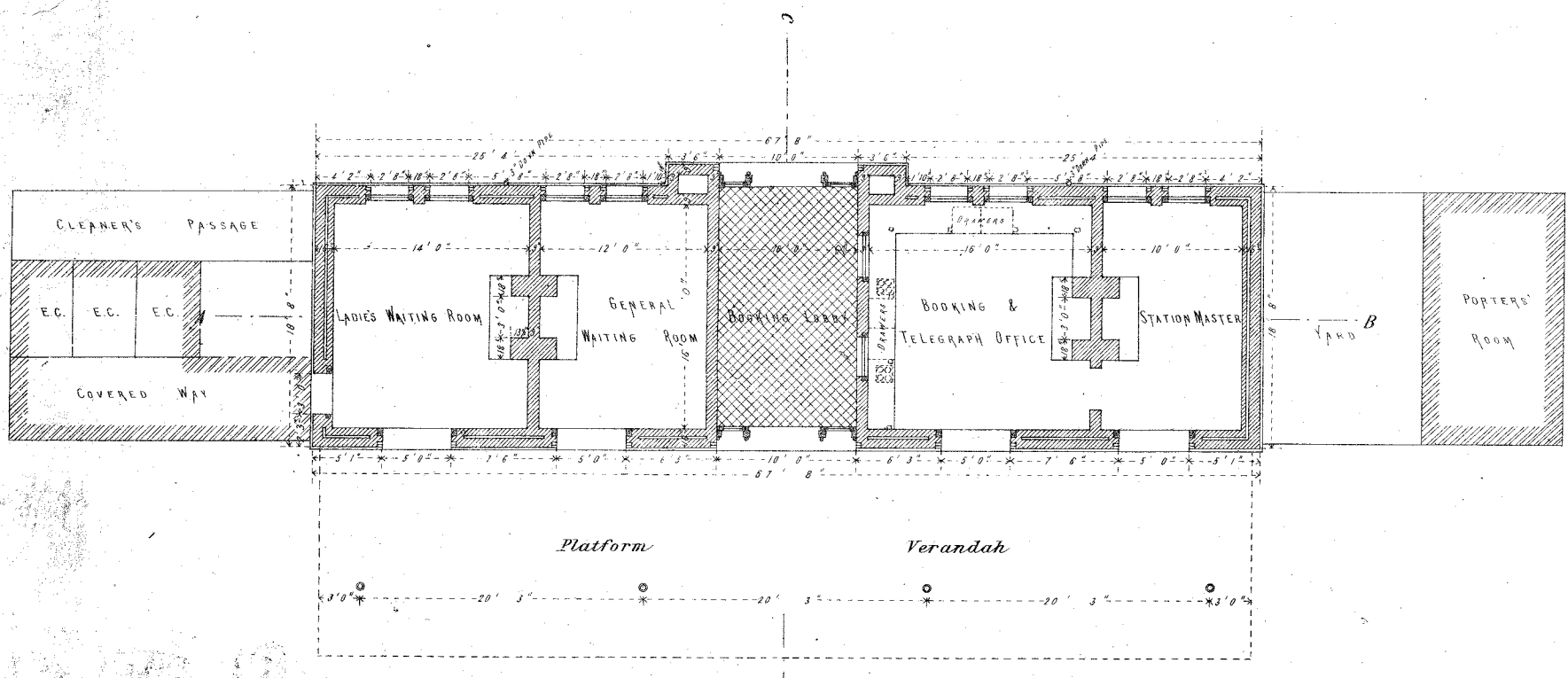


ELEVATION TOWARDS PLATFORM



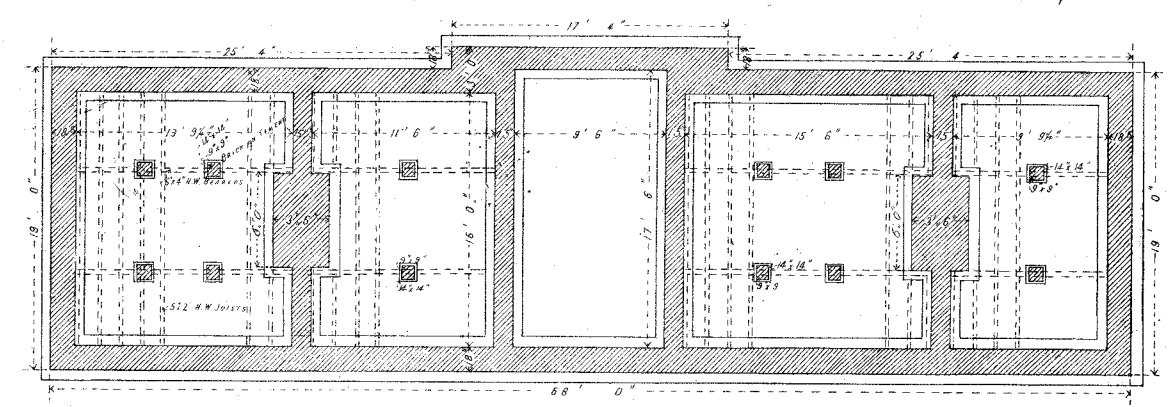
ELEVATION TOWARDS ROAD

The several drawings referred to in the
 contract are hereby approved and
 accepted by me, the
 Engineer, on the 16th July 88
 at Melbourne
 Signature of Engineer *L. Macdonald*
 Date 31. 7. 88

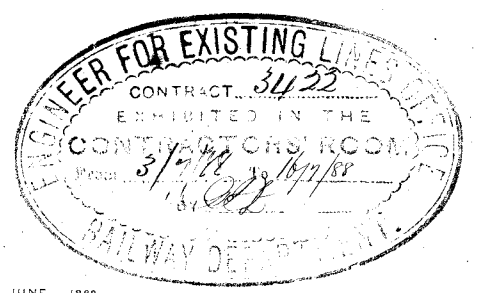


LINE OF WAY
 GROUND PLAN

NOTE for Outbuildings & Porters Room, Yard &c
 see Drawing N^o 1



PLAN OF FOUNDATIONS



RAILWAY DEPARTMENT, MELBOURNE, JUNE 1888.

RAILWAY DEPARTMENT
 JAN 2 1919

L.M.
 31. 7. 88