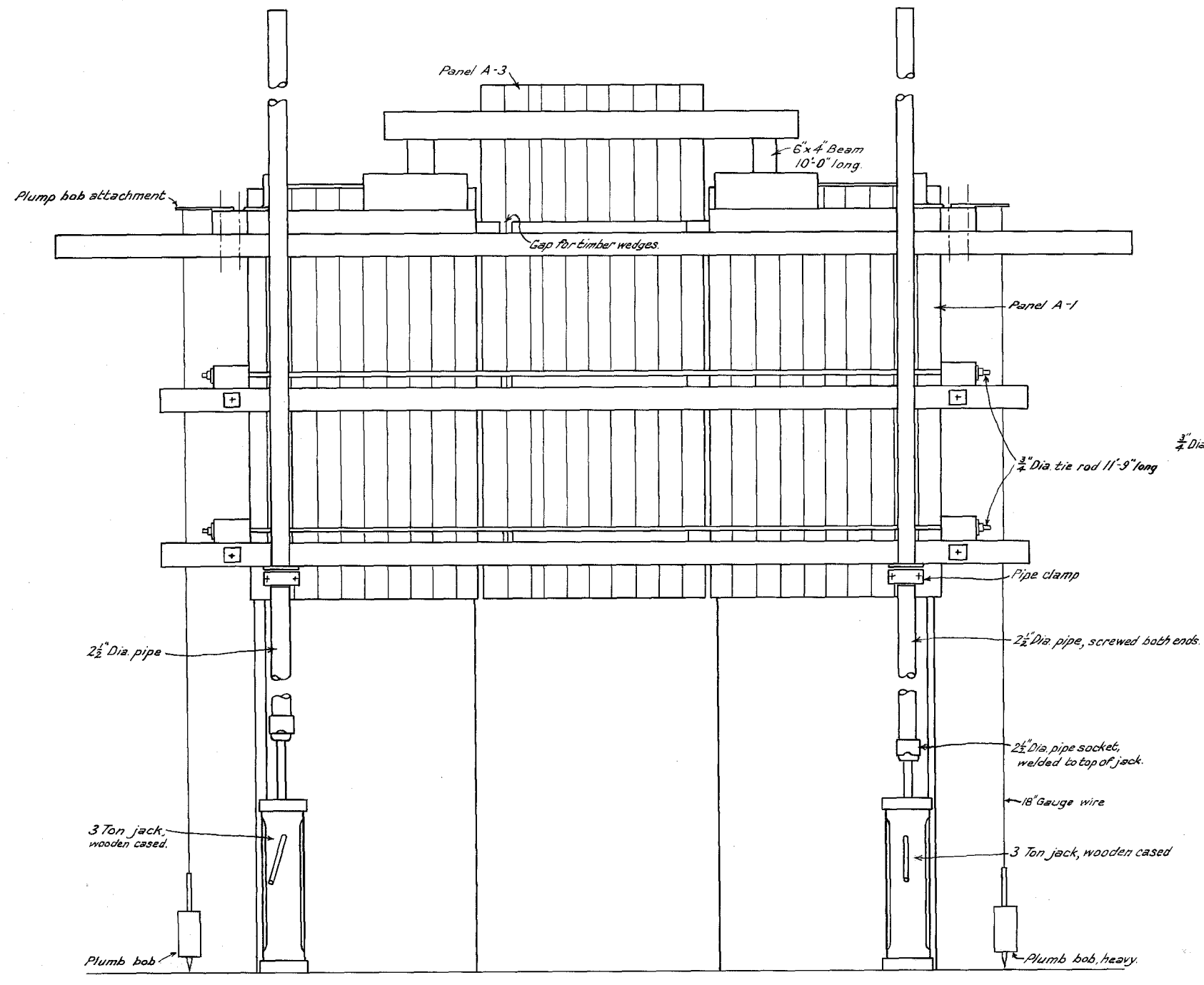
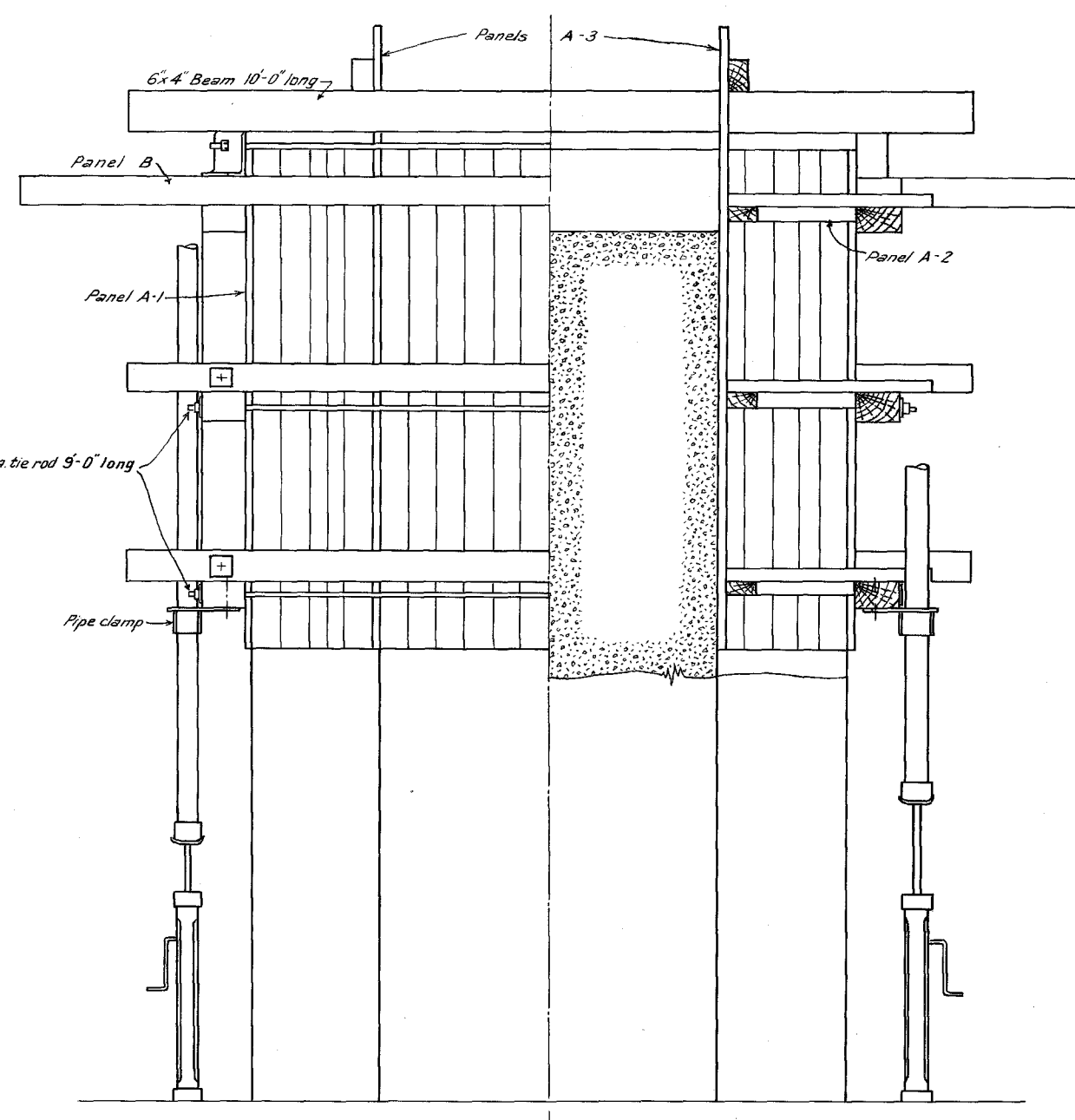


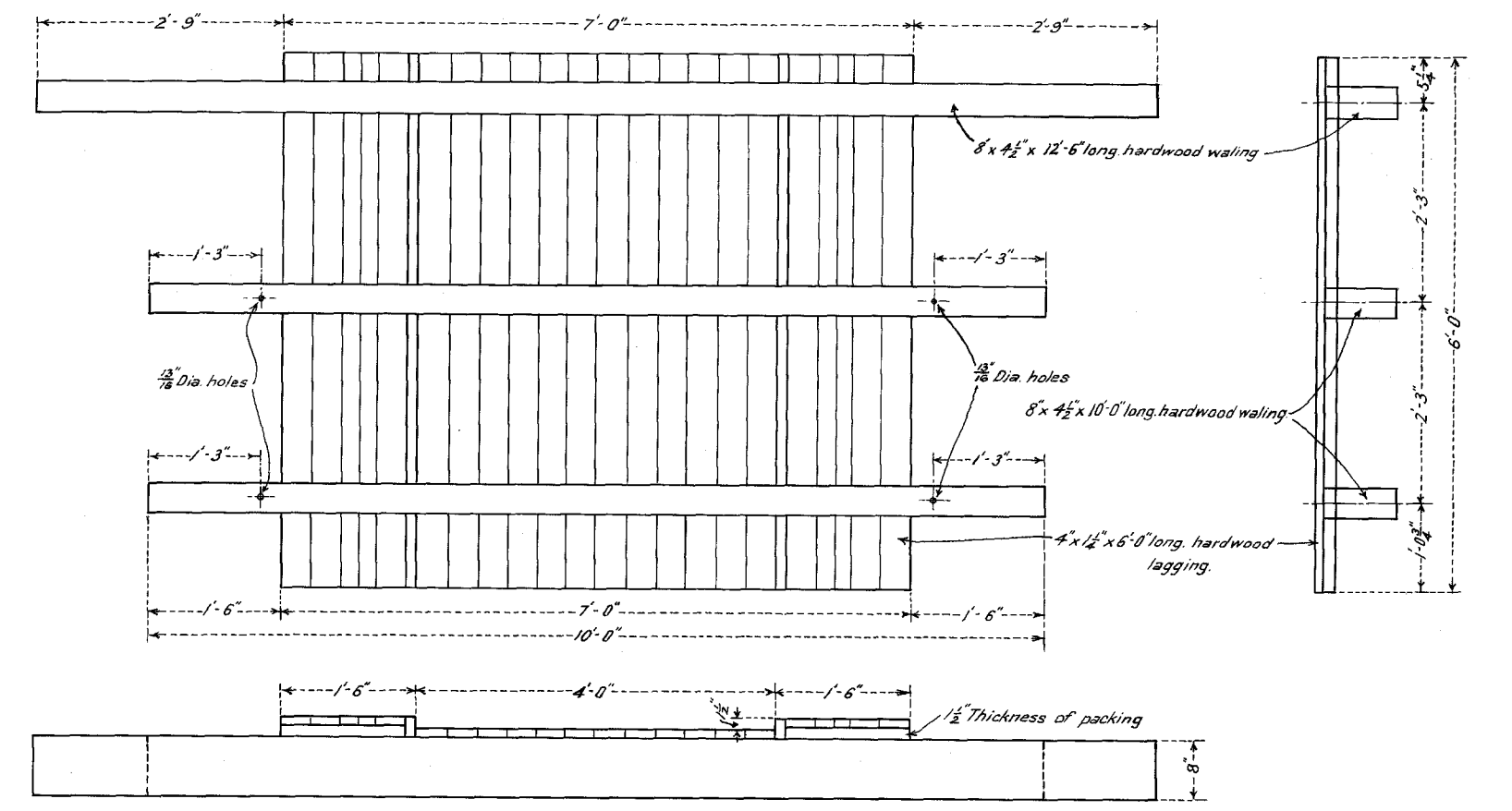
BOARD OF LAND & WORKS
RAILWAY CONSTRUCTION BRANCH



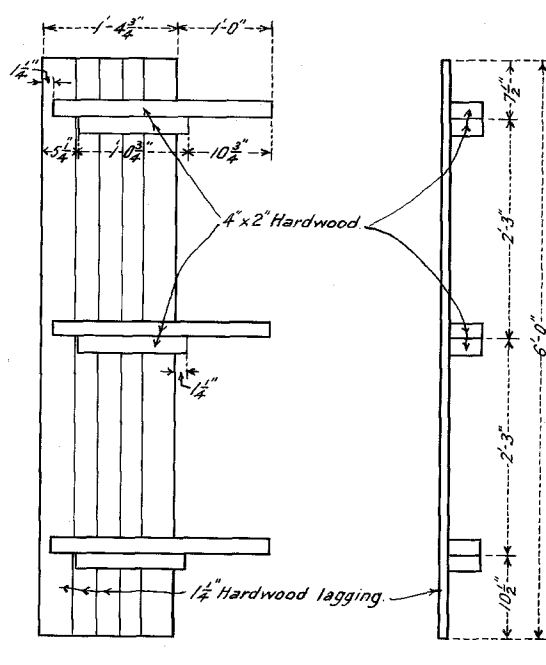
-ELEVATION-



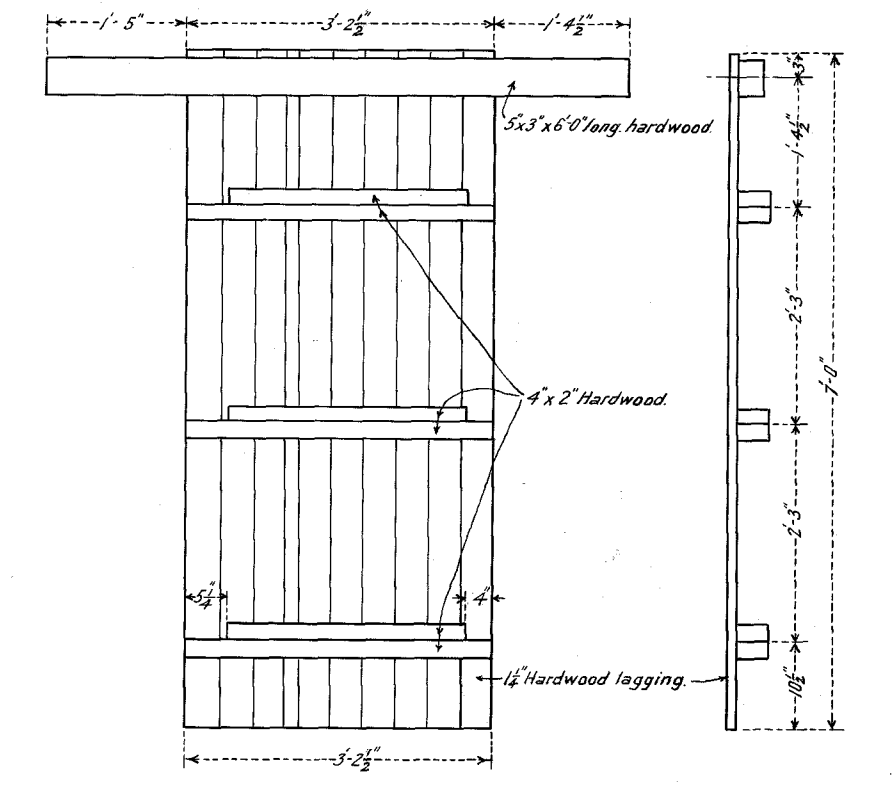
-SECTION X-X-



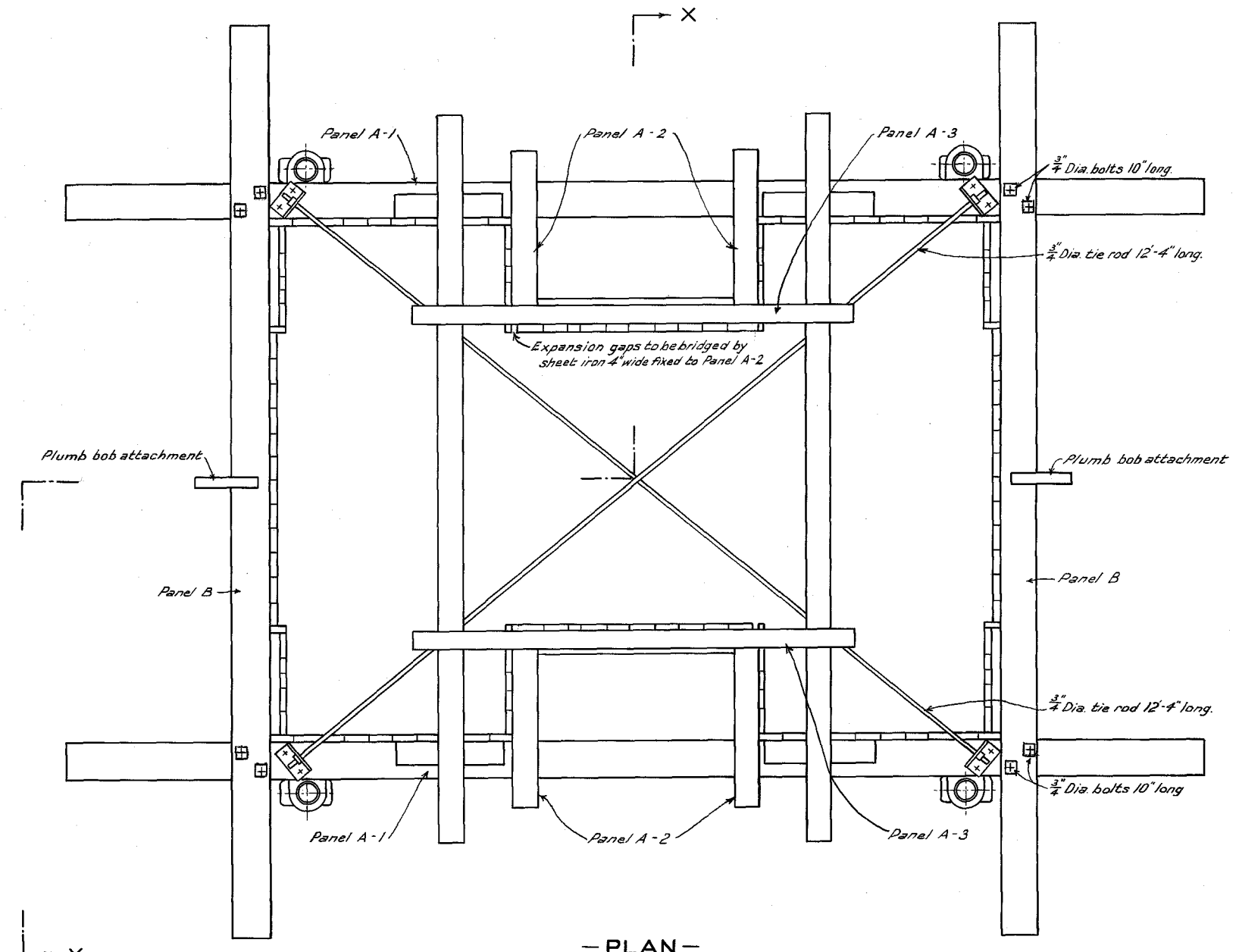
-PANEL B-
-2-OFF-



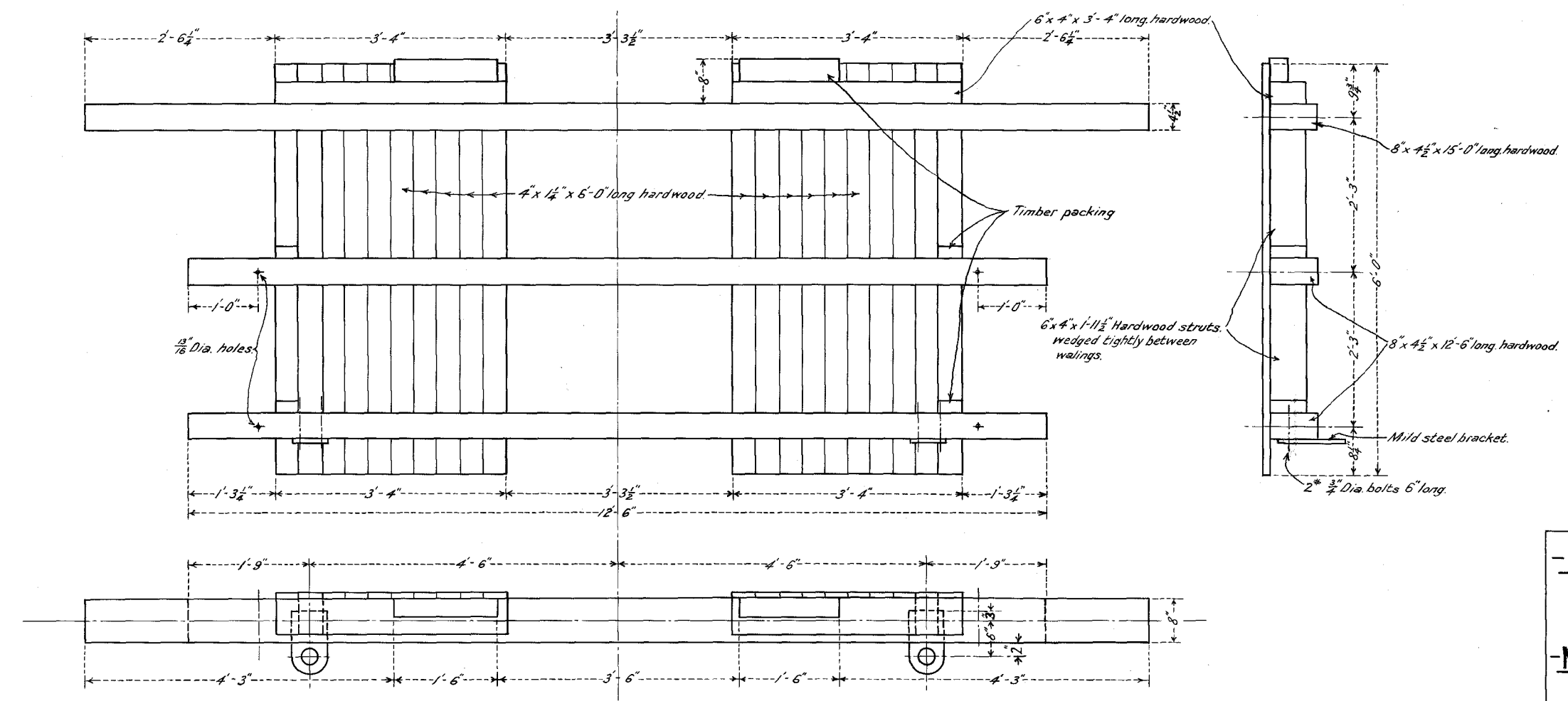
-PANEL A-2-
-AS SHOWN - 2-OFF -
-OPPOSITE HAND 2-OFF-



-PANEL A-3-
-2-OFF-



-PLAN-



-PANEL A-1-
-2-OFF-

-NOTE-
All lagging dressed one face to 1/4 inch thickness.
Dressed face to be on inside of forms.
All bolts 1/2 inch, except where shown otherwise.

-CASTLEMAINE TO MARYBOROUGH-
-DEVIATION AT JOYCE'S CREEK-
-BRIDGE OVER JOYCE'S CREEK-
-MOVING FORMS FOR PIER SHAFTS-
-LOWER SECTION-

Scale 3/8 Inch = 1 Foot

REVISIONS	LETTER	DATE	REMARKS	DRAWN BY	H. L. S.	SUPERINTENDING ENGINEER	DRAWING NO
				TRACED	A. S. K.	asa.	34/4217
				CHECKED			