

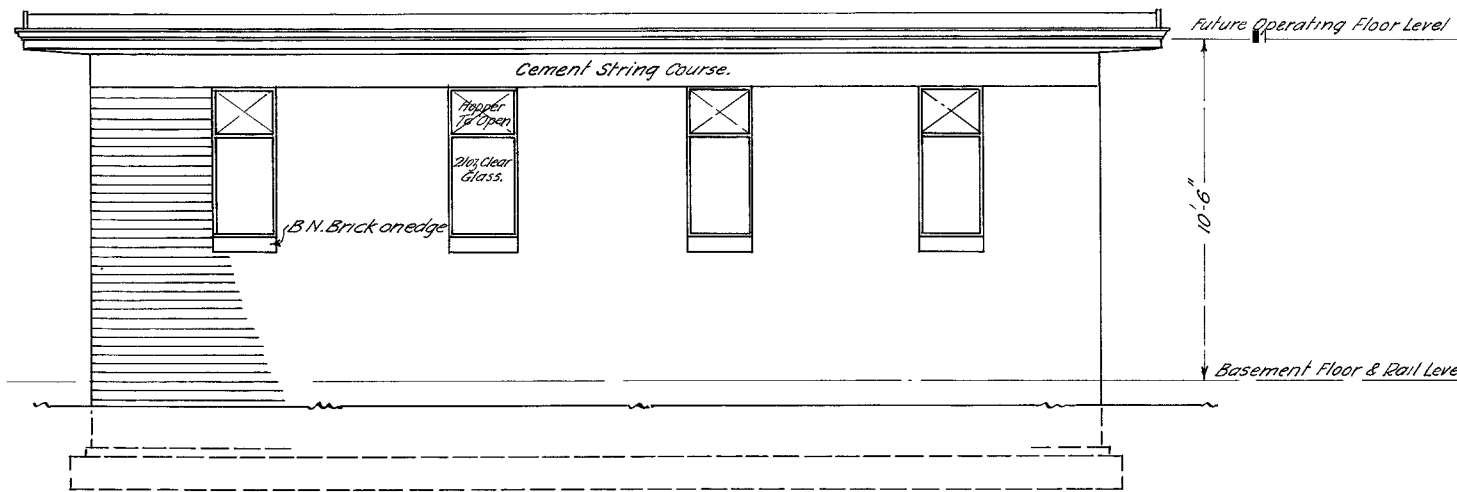
— V. R. —  
**CAULFIELD**  
 — NEW SIGNAL BOX. —  
 Scales  $\frac{1}{4}$ " &  $\frac{1}{2}$ " = 1'-0"

1002/26

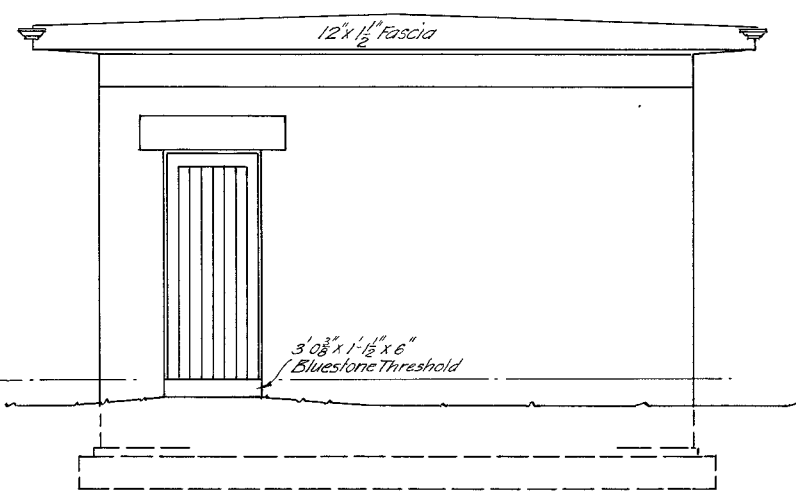
W.V. 15.4.26

*Ed. Seward*  
 Chief Engineer of Way & Works  
 19-4-26.

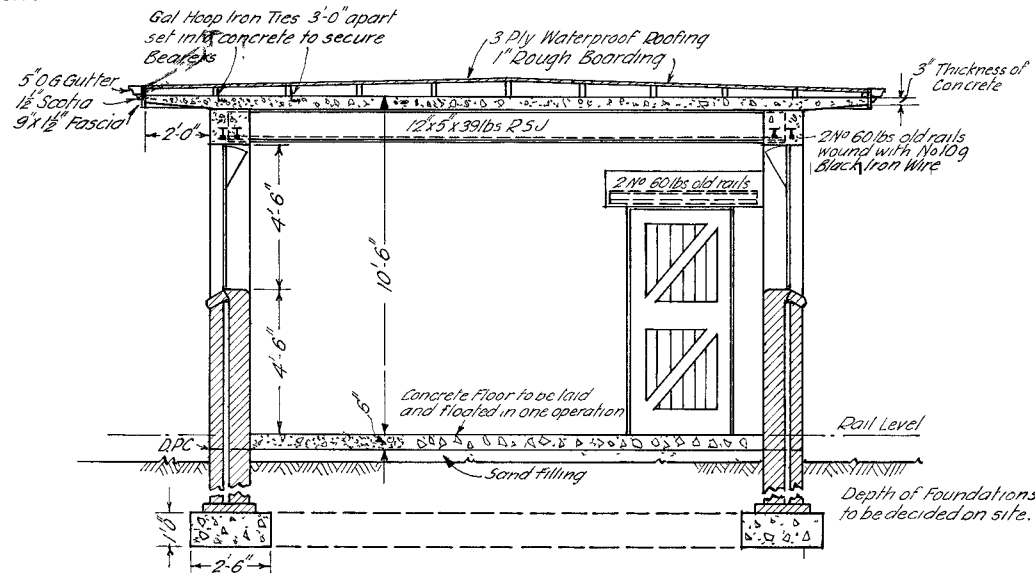
K. I. A.  
 21170  
 7 8 39



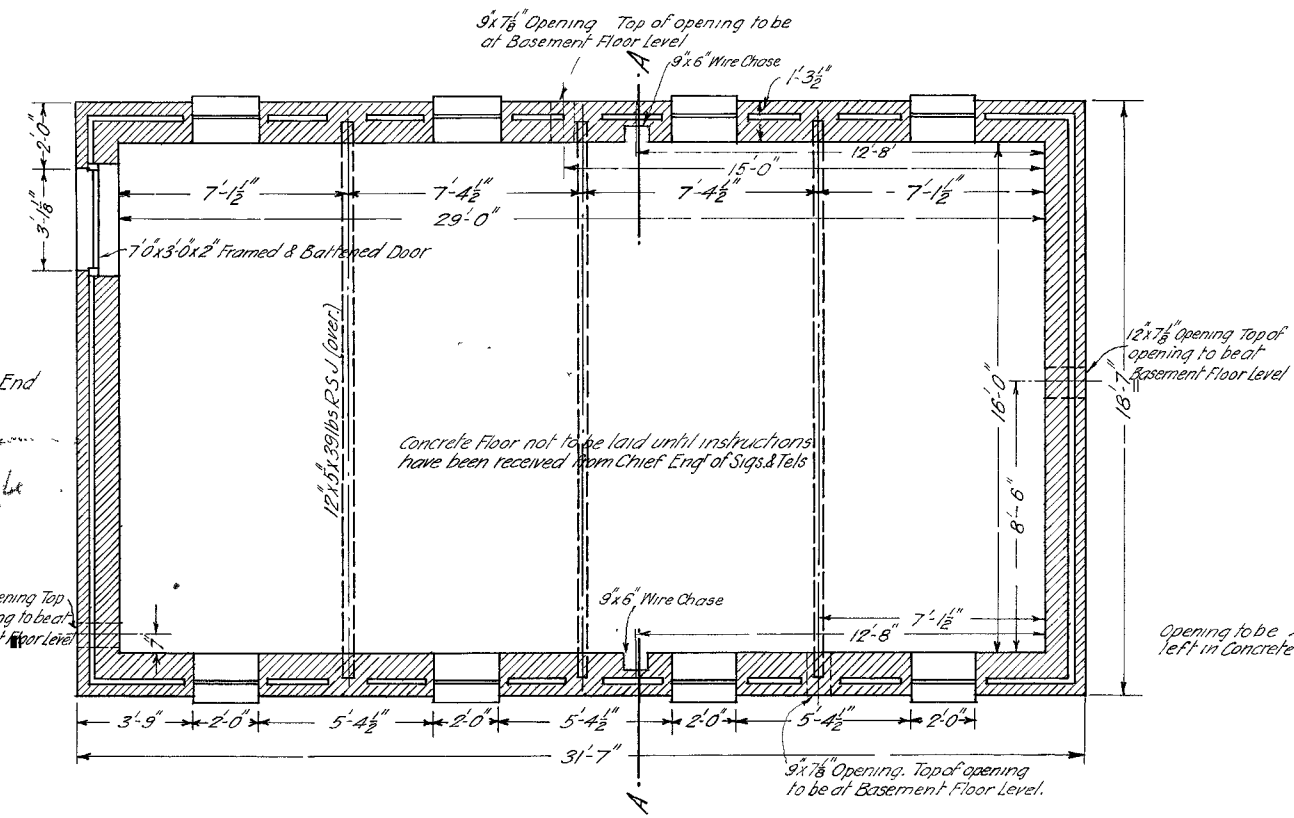
— NORTH & SOUTH ELEVATION. —



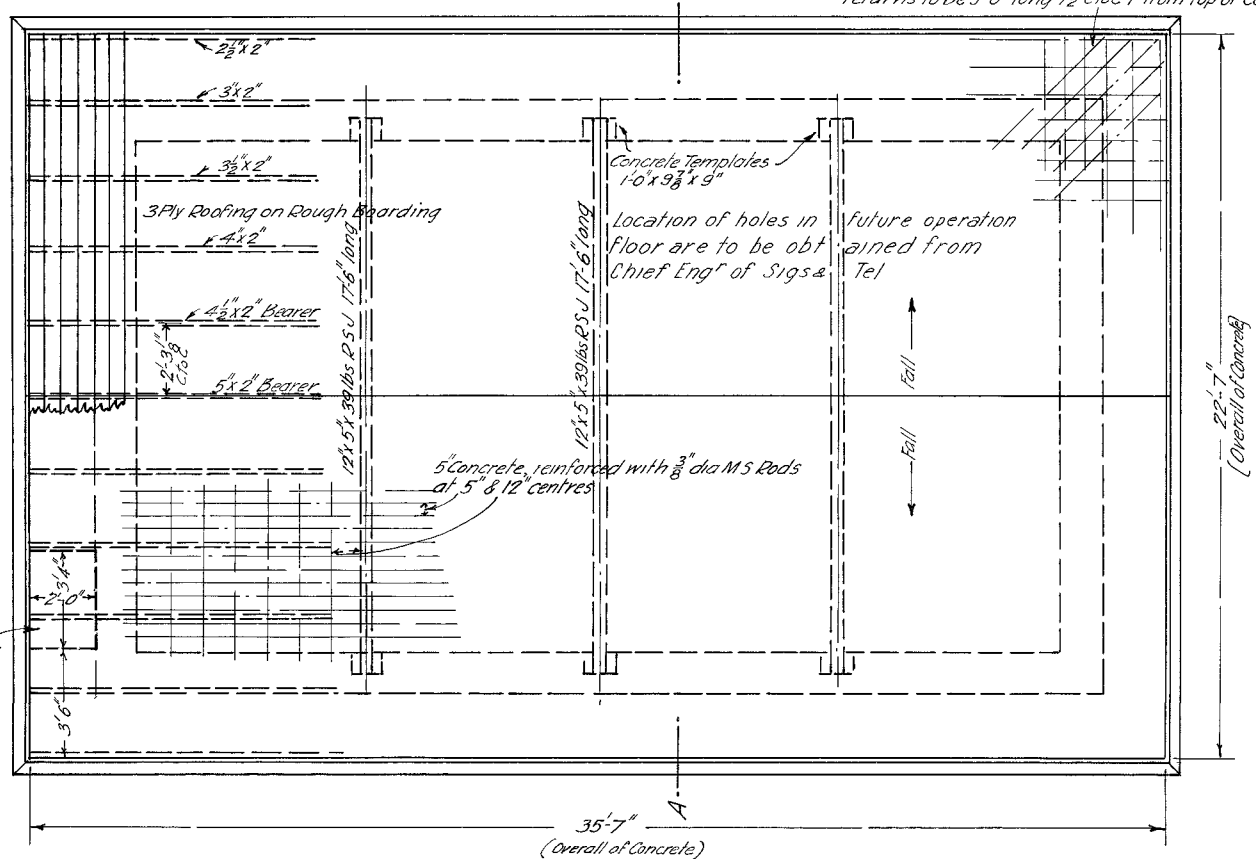
— WEST ELEVATION. —



— SECTION AA —

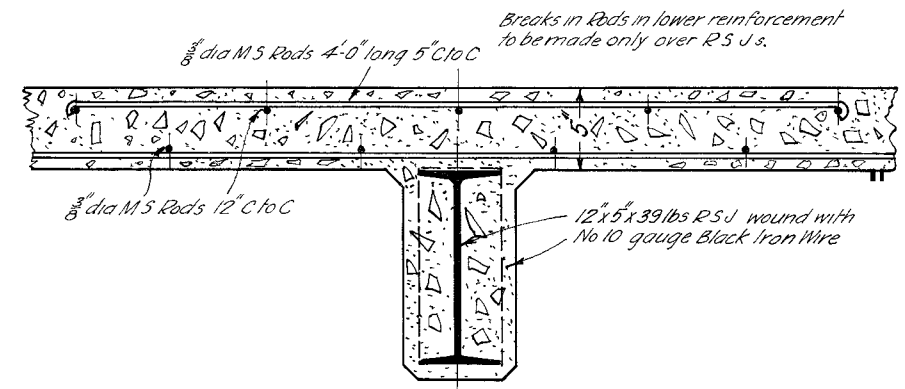


— BASEMENT PLAN —



— PLAN OF TEMPORARY ROOF. —

Balcony Floor to be cast monolithic, reinforced with  $\frac{3}{8}$ " dia M.S. Rods 4'-0" long  $7\frac{1}{2}$ " C to C 1" from top of Concrete Longitudinals 10" C to C 1" from bottom of Concrete. Diagonals at returns to be 5'-0" long  $7\frac{1}{2}$ " C to C 1" from top of Concrete.



— DETAIL OF FUTURE OPERATING FLOOR. —  
 Scale  $\frac{1}{2}$ " = 1'-0"

*Ed. Seward*  
 Chief Engineer of Sigs & Tels.

*Geo. Sawcutt*  
 Chief Architect  
 16.11.19.4.26.

1431-26  
 B 85  
 C 67