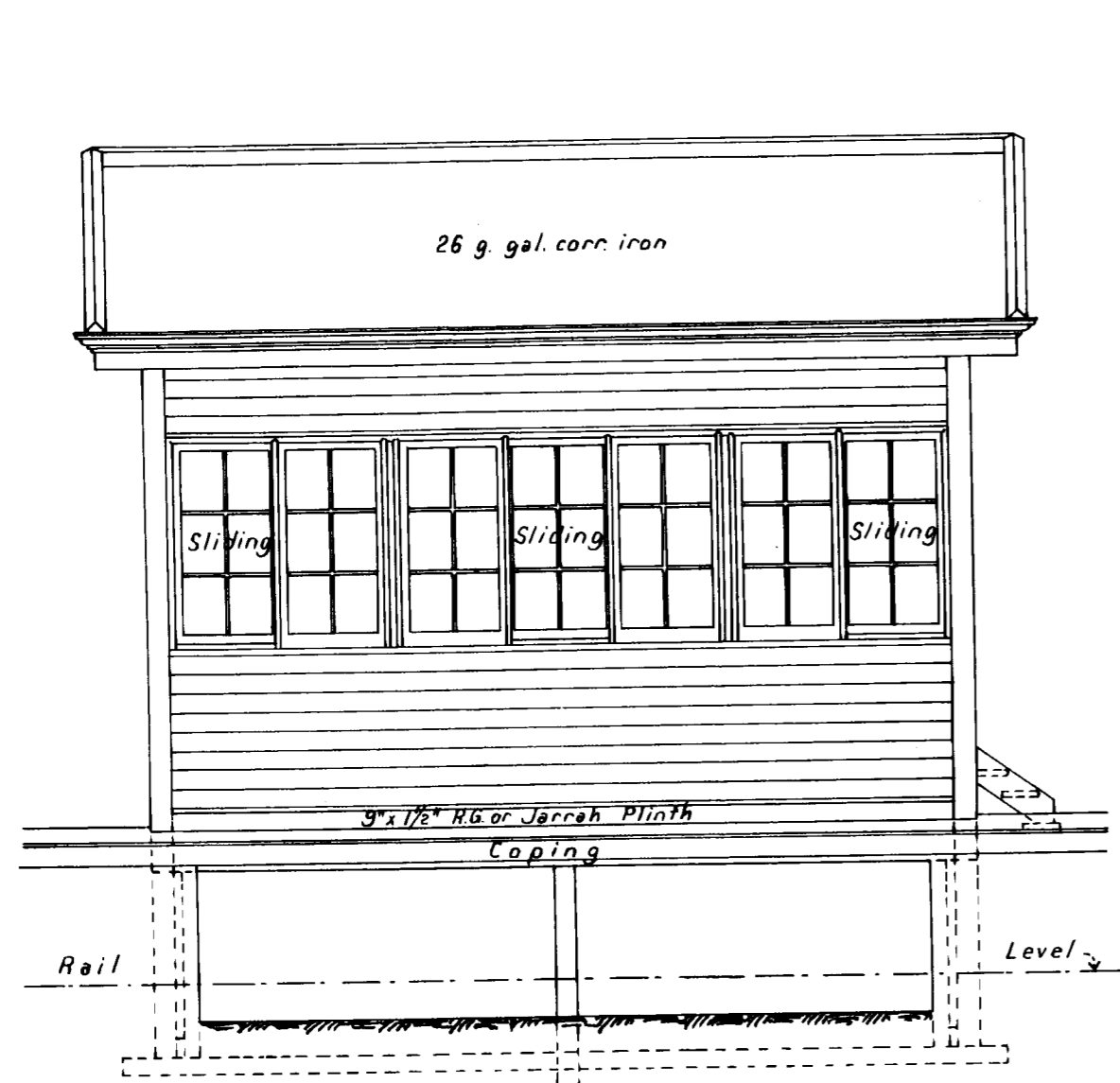
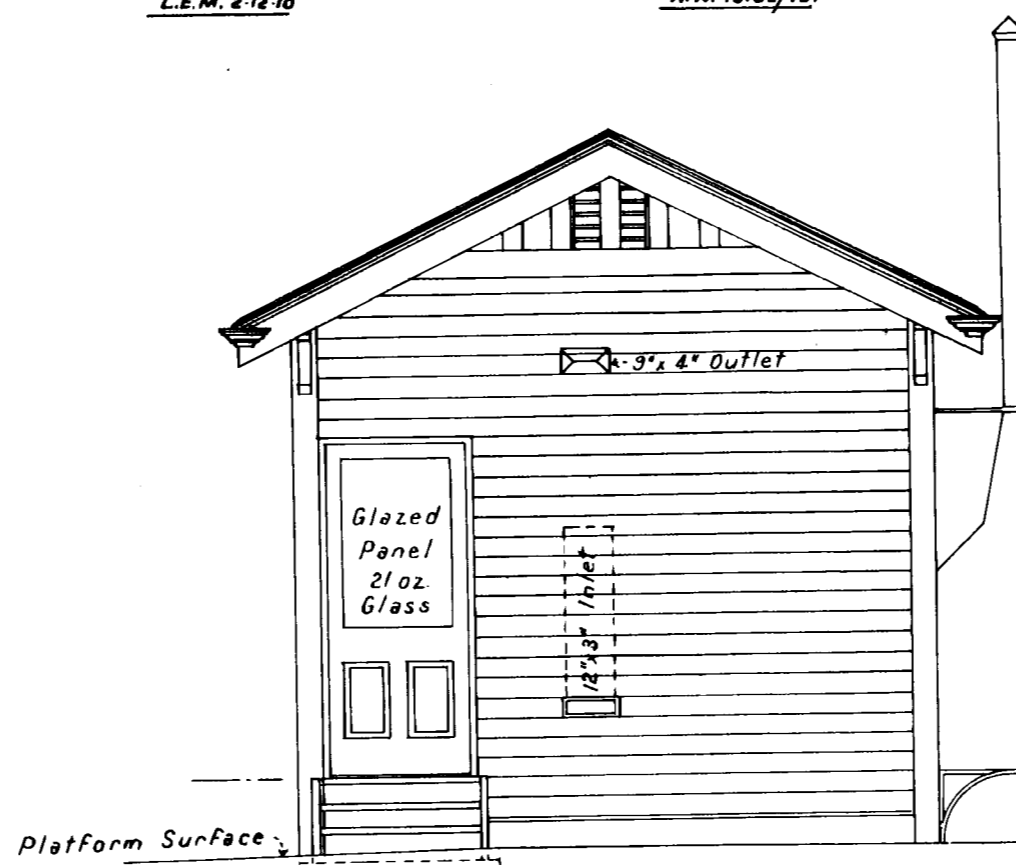


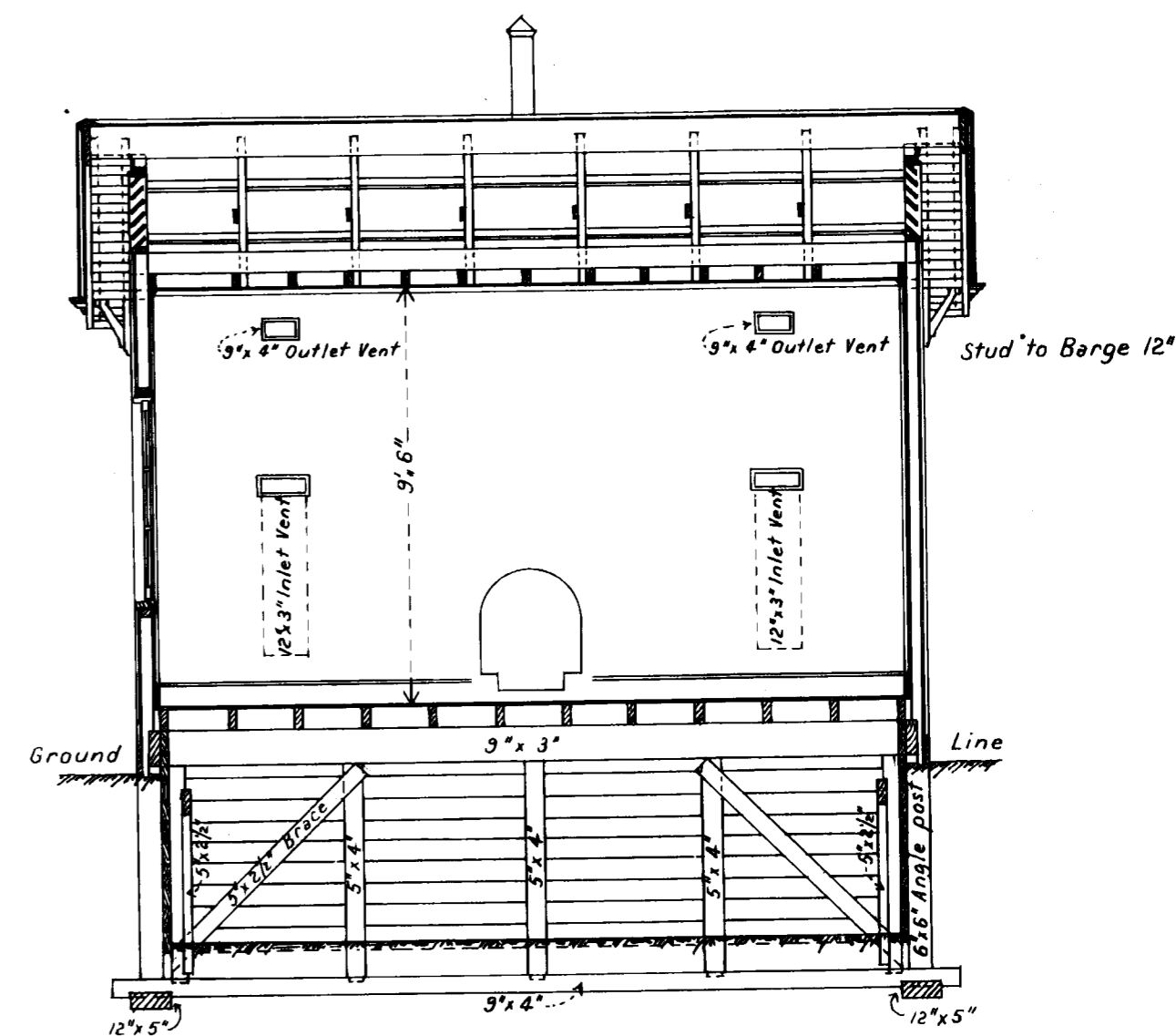
— V.R. —  
— DOOEN —  
— New Signal Box etc. —  
— Scale 4 Ft. = 1 Inch. —  
L.E.M. 2-12-10 W.W. 15/12/10.



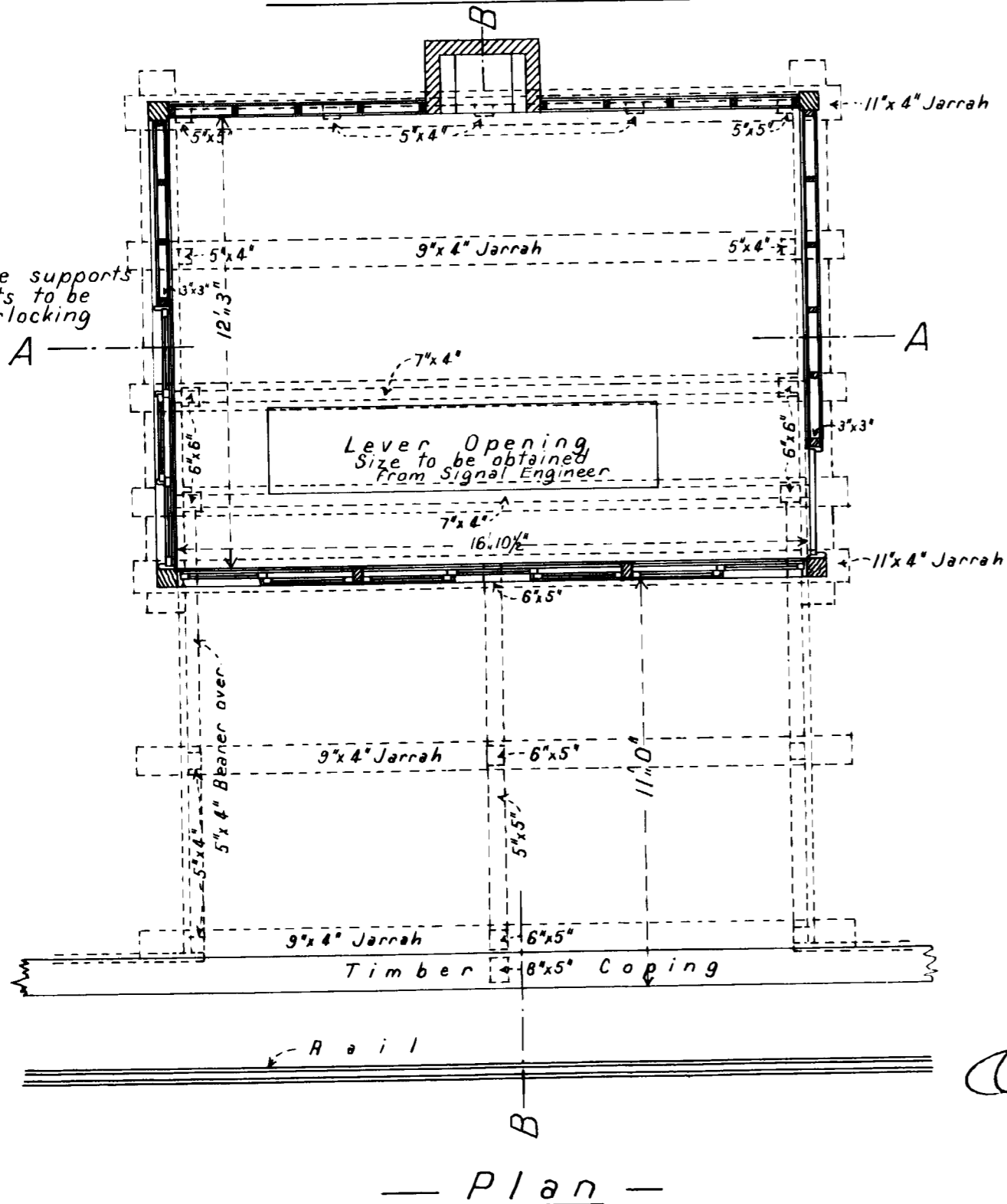
— Elevation to Platform —



— End Elevation —



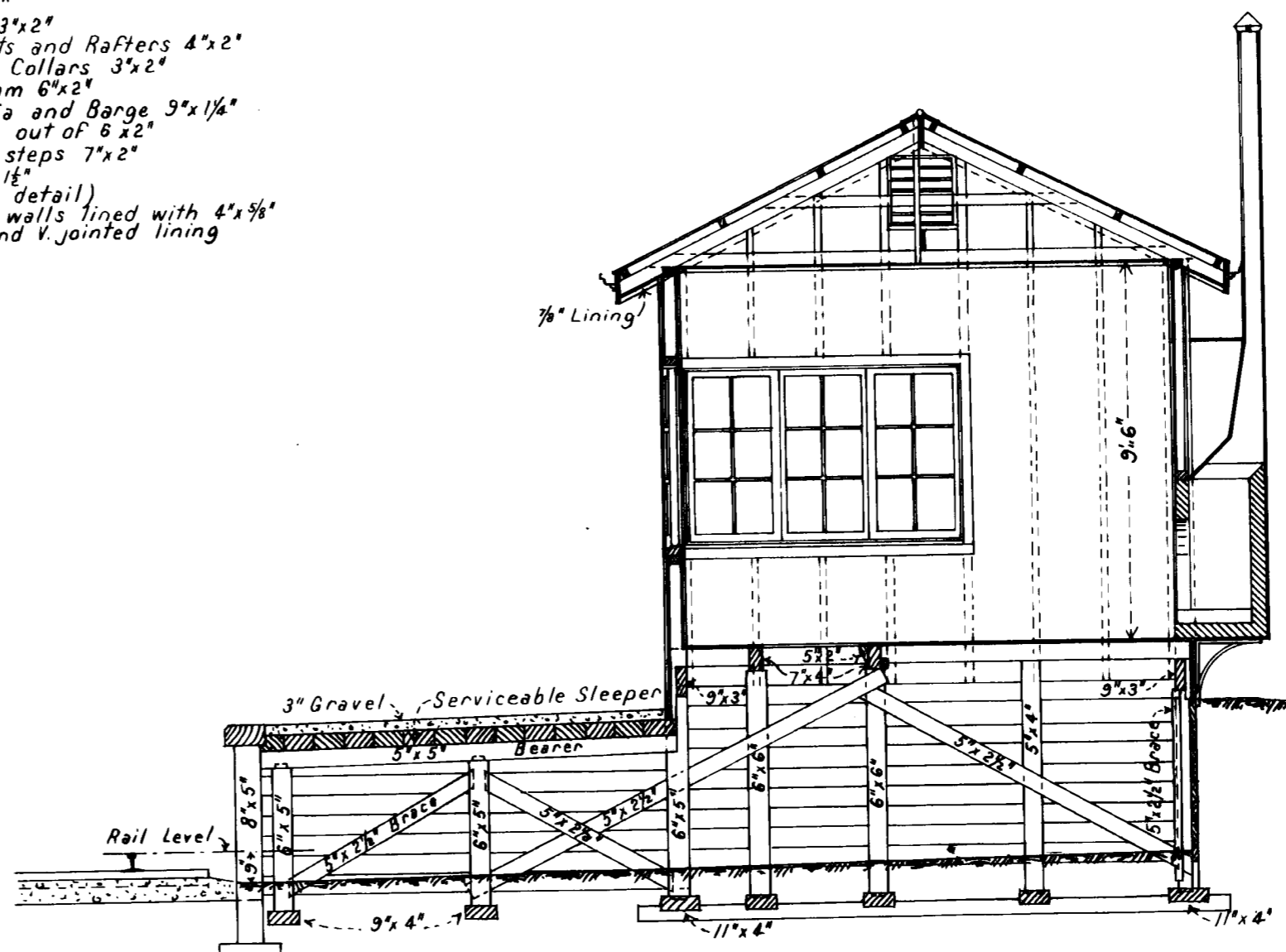
— Section A-A —



— Plan —

Note. Intermediate supports for 7"x4" joists to be fixed by interlocking staff.

- Sheeting for lever pit 6"x2" Jarrah
- Angle posts 6"x6" Jarrah
- Floor joists 6"x2"
- Flooring 6"x1 1/4"
- Studs 3"x2"
- Top plates 3"x2"
- Ceiling joists and Rafters 4"x2"
- Purlins and Collars 3"x2"
- Hanging beam 6"x2"
- Ridge, Fascia and Barge 3"x1 1/4"
- Cover Barge out of 6"x2"
- Strings for steps 7"x2"
- Treads 9"x1 1/2"
- Sashes (see detail)
- Ceiling and walls lined with 4"x 3/8" T and G and V jointed lining



— Section B-B —

*Dooen*  
10.12.10

